

**DETOURS, BARRICADES, WARNING SIGNS, SEQUENCE OF WORK, ETC.**

THE CONTRACTORS ATTENTION IS DIRECTED TO THE REQUIREMENTS OF ITEM 7, "LEGAL RELATIONS AND RESPONSIBILITIES TO THE PUBLIC", OF THE STANDARD SPECIFICATIONS. IN ADDITION TO THESE REQUIREMENTS, THE FOLLOWING PROVISIONS SHALL ALSO GOVERN ON THIS CONTRACT:

**1. GENERAL**

1. TRAFFIC MUST BE HANDLED THROUGHOUT THE PROJECT DURING CONSTRUCTION. THE CONTRACTOR IS RESPONSIBLE FOR PROVIDING A SAFE AND COMFORTABLE PASSAGE FOR VEHICULAR AND PEDESTRIAN TRAFFIC WITH MINIMAL INCONVENIENCE TO THE PUBLIC, AS SHOWN IN THE PLANS OR AS DIRECTED/APPROVED BY THE ENGINEER.

2. THE CONTRACTOR MAY PROPOSE/RECOMMEND MODIFICATIONS TO THE SEQUENCE OF WORK FOR CONSIDERATION BY THE ENGINEER, ANY MAJOR RECOMMENDED MODIFICATION BY THE CONTRACTOR SHALL INCLUDE ANY CHANGES TO THE VARIOUS BID ITEMS, IMPACT TO TRAFFIC, EFFECT OF OVERALL PROJECT IN TIME AND COST, ETC. IF THIS PROPOSAL IS IMPLEMENTED, THE CONTRACTOR WILL BE RESPONSIBLE FOR DEVELOPING DETAILED PLAN SHEETS TO BE SEALED BY A LICENSED PROFESSIONAL ENGINEER FOR INCLUSION WITH THE CHANGE ORDER. THE CONTRACTOR CANNOT PROCEED WITH ANY CONSTRUCTION OPERATIONS BASED ON A REVISED PHASE/SEQUENCE UNTIL WRITTEN APPROVAL IS OBTAINED FROM THE ENGINEER. IF AT ANY TIME DURING CONSTRUCTION THE CONTRACTORS PROPOSED PLAN OF OPERATION FOR HANDLING TRAFFIC DOES NOT PROVIDE FOR SAFE AND COMFORTABLE MOVEMENT, THE CONTRACTOR WILL IMMEDIATELY CHANGE THEIR OPERATION TO CORRECT THE UNSATISFACTORY CONDITION.

3. DO NOT STORE ANY CONSTRUCTION MATERIAL OR EQUIPMENT AT ANY LOCATION THAT WILL CONSTITUTE A HAZARD AND WILL ENDANGER TRAFFIC.

4. THE CONTRACTOR WILL PROVIDE ADVANCE NOTIFICATION TO THE ENGINEER IMPENDING/UPCOMING LANE CLOSURES FOR ALL TEMPORARY AND/OR PERMANENT LANE, RAMP, CONNECTOR, FRONTAGE, SHOULDER, ETC. CLOSURES OR DETOURS. SEE GENERAL NOTES FOR NOTIFICATION REQUIREMENTS.

5. ACCESS TO ADJOINING PROPERTY MUST BE MAINTAINED AT ALL TIMES.

6. TEMPORARY DRAINAGE IS THE RESPONSIBILITY OF THE CONTRACTOR.

7. AT NO TIME SHALL TWO CONSEQUITIVE INTERSECTING ROADWAYS BE CLOSED AT ONE TIME DURING CONSTRUCTION.

8. AT NO TIME SHALL TWO CONSEQUITIVE RAMPS BE CLOSED AT ONE TIME DURING CONSTRUCTION OR OVERLAY OPERATIONS.

9. UNLESS OTHERWISE NOTED IN THE PLANS AND/OR AS DIRECTED BY THE ENGINEER, DAILY LANE CLOSURES SHALL BE LIMITED ACCORDING TO THE FOLLOWING RESTRICTIONS:  
 NIGHTTIME: ASK AREA ENGINEER AND CONSTRUCTION ENGINEER (WITH UNIFORMED OFF DUTY LAW ENFORCEMENT OFFICERS)  
 WEEKEND CLOSURES WHEN APPROVED BY THE ENGINEER: ASK AREA ENGINEER AND CONSTRUCTION ENGINEER.  
 NO LANE CLOSURES WILL BE PERMITTED FOR THE FOLLOWING DATES: BETWEEN DECEMBER 15 AND JANUARY 1, FIESTA WEEK AND TAX FREE WEEKEND (BEXAR COUNTY ONLY), WEDNESDAY BEFORE THANKSGIVING THRU THE SUNDAY AFTER THANKSGIVING, SATURDAY AND SUNDAY BEFORE MEMORIAL DAY AND LABOR DAY, SATURDAY OR SUNDAY WHEN JULY 4 FALLS ON A FRIDAY OR MONDAY, ELECTION DAYS (BEXAR COUNTY ONLY), FRIDAY, SATURDAY AND SUNDAY OF EASTER WEEKEND

10. REMOVAL AND DISPOSAL OF EXISTING ABANDONDED UTILITIES (EITHER PERVIOUSLY ABANDONDED OR ABANDONDED DURING THIS PROJECT) REQUIRED TO SUPPORT THIS PROJECT SHALL BE PERFORMED UNDER THE OVERALL PREPARE RIGHT-OF-WAY ITEM (ITEM 100).

11. COORDINATE WITH ADJACENT PROJECTS.

12. COVER PERMANENT SIGNS IF NOT USED. THIS IS SUBSIDIARY TO ITEM 502.

13. EXCAVATION WITHIN 5 FEET OF AN EXISTING CPS ENERGY POLE WILL REQUIRE POLE BRACING. CONTACT CPS ENERGY UTILITY COORDINATION TO REQUEST POLE BRACING (JOHN OFFER, JOFFER@CPSENERGY.COM). THE ESTIMATED DURATION FOR THE POLE BRACING PROCESS IS APPROXIMATELY 6 TO 8 WEEKS.

14. COORDINATE WITH THE CITY OF SAN ANTONIO OR TXDOT FOR SIGNAL TIMING REVISIONS, AS NECESSARY.

15. EXCAVATION MORE THAN 12" IN DEPTH WITHIN 5 FEET OF AN EXISTING CPS ENERGY POLE WILL REQUIRE POLE BRACING. CONTACT CPS ENERGY UTILITY COORDINATION TO REQUEST POLE BRACING. THE ESTIMATED DURATION FOR THE POLE BRACING PROCESS IS APPROXIMATELY 6 TO 8 WEEKS.

16. ADVANCE WARNING SIGNS AND LANE CLOSURES MUST BE MOVED UP PERIODICALLY IN ORDER TO KEEP UP WITH THE MOVING WORK ZONE. AS WORK PROGRESSES, THE LANE CLOSURE SIGNING AND APPROPRIATE BARRICADES MUST FOLLOW APPLICABLE STANDARDS.

17. CONTRACTOR SHALL NOT REMOVE OR ADJUST ANY VIA ASSETS.

18. CONTRACTOR SHALL CONTACT VIA THIRTY (30) DAYS PRIOR, FOR:

(A) THE REMOVAL OF BENCHES, STOP POLES AND ANY OTHER VIA AMENITIES WITHIN THE PROJECT LIMITS.

(B) THE REMOVAL OF SHELTERS.

(C) THE COORDINATION OF TEMPORARY BUS STOPS.

19. THE CONTRACTOR WILL BE LIABLE FOR ANY DAMAGES TO VIA FACILITIES NOT REMOVED BY VIA.

20. THE CONTRACTOR IS REQUIRED TO REPLACE ALL FLATWORK REMOVED OR DAMAGED IN THE COURSE OF EXECUTING THE CONTRACT UNLESS OTHERWISE NOTED BY VIA.

21. THE CONTRACTOR WILL BE RESPONSIBLE FOR PROTECTING VIA FACILITIES IF ADJACENT TO WORK AREA.

22. CONCERNING NEW VIA RELATED FLATWORK: THE CONTRACTOR SHALL SCHEDULE WITH VIA A PRE-POUR INSPECTION FOR ANY SHELTER SLAB, PAD, ADA CONNECTOR OR OTHER REPLACEMENT THAT DIRECTLY AFFECTS VIA AMENITIES NOT TO INCLUDE SIDEWALKS.

**2. SEQUENCE OF WORK**

IH 35 ; US 90 ; RIGSBY ; E. HOUSTON

1. NOTIFY AFFECTED BUSINESS OWNERS 2 WEEKS PRIOR TO CONSTRUCTION, MAINTAIN TEMPORARY ACCESS AT ALL TIMES.

2. CLOSE SIDEWALK TO PEDESTRIAN TRAFFIC, DETOUR PEDESTRIANS PER TXDOT STANDARD WZ(BTS-2)-13. SEE ADVANCE WARNING SIGN LAYOUT SHEETS FOR THE INITIAL ADVANCE WARNING SIGN SETUP.

3. INSTALL SW3P IN ACCORDANCE WITH STORM WATER POLLUTION PREVENTION PLAN.

4. REMOVE EXISTING SIDEWALK, DRAINAGE STRUCTURES, AND EXISTING ROAD MATERIAL, SEE TYPICAL SECTIONS, PAVEMENT DETAILS AND PLAN LAYOUT SHEETS FOR ADDITIONAL INFORMATION. ENSURE POSITIVE DRAINAGE AROUND INTERSECTION RETURNS. CONTRACTOR SHALL INSTALL METAL PLATE OVER OPEN TRENCHES, UNCOVERED MANHOLES AND INLETS ADJACENT TO TRAFFIC OVER NIGHT OR WHEN NO WORK IS BEING PERFORMED. INSTALL TEMPORARY PAVEMENT MARKINGS AS NEEDED OR AS DIRECTED BY THE ENGINEER.

5. CONSTRUCT RETAINING WALL FOOTINGS AND WALLS, INSTALL DRAINAGE ELEMENTS FROM DOWNSTREAM TO UPSTREAM. ENSURE POSITIVE DRAINAGE FROM EXISTING TO PROPOSED DRAINAGE STRUCTURES. WORK AT EACH LOCATION MUST BE COMPLETED BY THE END OF EACH DAY (7 AM TO 7 PM).

6. FORM SIDEWALKS, CURB RAMPS AND STEPS.

7. CONSTRUCT SIDEWALKS, CURB RAMPS, STEPS, AND INSTALL PEDESTRIAN RAILS.

8. OPEN COMPLETED SIDEWALK TO PEDESTRIANS AS SOON AS POSSIBLE, WITH THE APPROVAL OF THE ENGINEER.

9. ADJUST PEDESTRIAN PUSH BUTTONS.

10. AFTER ALL SIDEWALK AND DRAINAGE IMPROVEMENTS ARE COMPLETE FOR ALL CORNERS, AND PLANE ASPHALT AS INDICATED, INSTALL TEMPORARY PAVEMENT MARKINGS AS NEEDED OR AS DIRECTED BY THE ENGINEER.

11. INSTALL PERMANENT PAVEMENT MARKINGS.

12. INSTALL/RELOCATE PERMANENT SIGNING.

13. REMOVE SW3P ITEMS.

SAN PEDRO AVE. SP 537

1. NOTIFY AFFECTED BUSINESS OWNERS 2 WEEKS PRIOR TO CONSTRUCTION, MAINTAIN TEMPORARY ACCESS AT ALL TIMES.

2. CLOSE SIDEWALK TO PEDESTRIAN TRAFFIC, DETOUR PEDESTRIANS PER TXDOT STANDARD WZ(BTS-2)-13. SEE ADVANCE WARNING SIGN LAYOUT SHEETS FOR THE INITIAL ADVANCE WARNING SIGN SETUP.

3. INSTALL SW3P IN ACCORDANCE WITH STORM WATER POLLUTION PREVENTION PLAN.

**PHASE 1 STEP 1**

1) ESTABLISH ADVANCE WARNING SIGNAGE, REMOVE OR COVER CONFLICTING EXISTING SIGNAGE, OR AS DIRECTED BY THE ENGINEER.

2) ASSEMBLE PLASTIC DRUMS AND SIGNAGE FOR LANE CLOSURES AS INDICATED ON THIS LAYOUT

3) PHASE 1 STEP 1 TRAFFIC CONTROL LAYOUT MAY ONLY BE UTILIZED DURING NIGHT TIME HOURS (9PM - 5AM). WITH LANE CLOSURES ESTABLISHED, THE CONTRACTOR MAY WORK IN BOTH WORK AREAS INDICATED SIMULTANEOUSLY.

4) REMOVE EXISTING CURB, CONCRETE, AND OTHER MISCELLANEOUS MATERIALS. HAUL MATERIALS OFFSITE IN ACCORDANCE WITH THE CONTRACT DOCUMENTS

5) BACKFILL EXCAVATED AREAS NEAR PAVEMENT EDGES WITH LOOSE MATERIAL FOR PROPER SAFETY SLOPES (3:1 MAX).

6) PLACE STEEL REINFORCEMENT MATS

7) POUR CONCRETE PAVEMENT AND CURB

8) RESTORE TRAFFIC AT THE END OF EACH NIGHT, NO LANE CLOSURES MAY REMAIN DURING DAYTIME HOURS (5AM - 9PM).

**PHASE 1 STEP 1A**

1) NOTIFY VIA AND COORDINATE MEDIAN REMOVAL SCHEDULE. MUST COMPLETE MEDIAN REMOVAL AND CONCRETE PAVEMENT WORK IN CONTINUOUS SUCCESSION ONCE WORK ACTIVITIES BEGIN.

2) REMOVE MEDIAN AND PLACE TEMP ALL WEATHER SURFACE FOR DAYTIME USE ONLY.

**PHASE 1 STEP 2**

1) CONTRACTOR MAY WORK IN BOTH WORK AREAS INDICATED SIMULTANEOUSLY.

2) TIE AND PREP STEEL REINFORCEMENT FOR CONCRETE PAVEMENT AREAS, STEEL MATS MAY BE PREPARED OFFSITE.

3) COMPLETE FORMWORK, DOWELING INTO EXISTING PAVEMENT, STAGE MATERIALS AND PERFORM ANY MISCELLANEOUS PREPERATORY WORK REQUIRED PRIOR TO PLACING CONCRETE PAVEMENT



4) INSTALL MISCELLANEOUS FLATWORK, PAVERS, SIGNING, SIGNAL EQUIPMENT

CONTRACTOR TO UTILIZE STEP 1 AND STEP 2 AS NEEDED TO COMPLETE WORK ACTIVITIES BEFORE PROCEEDING TO ADDITIONAL PHASES.

(CONTINUED.)

Plotted on: 10/27/2017

Design File name: P:\111\35\01\des\ign\Civil\TCP\1113501\_TCP\_Narr.dgn

REV. NO.	DATE	DESCRIPTION	BY			
 <p>SAN ANTONIO   AUSTIN   HOUSTON   FORT WORTH   DALLAS                  2000 NW LOOP 410   SAN ANTONIO, TX 78213   210.375.9000                  TBPE FIRM REGISTRATION #470   TBPLS FIRM REGISTRATION #10028800</p>						
 <p>© 2017</p>						
<p><b>TRAFFIC CONTROL PLAN</b>  <b>NARRATIVE</b></p>						
SHEET 1 OF 2						
DGN:	FED. RD. DIV. NO.:	STATE:	FEDERAL AID PROJECT NO.:	HIGHWAY NO.:		
CHK DGN:	6	TEXAS		VA		
DWG:	DIST.:	COUNTY:	CONT. NO.:	SECT. NO.:	JOB NO.:	SHEET NO.:
CHK DWG:	SAT	BEXAR	0915	12	586	36

Plotted on: 10/27/2017

Design File name: P:\111\35\01\des\gn\Civil\TCP\1113501\_TCP\_Narr.dgn

2. SEQUENCE OF WORK (CONT.)

SAN PEDRO AVE. SP 537 (CONT.)

- 5. FORM SIDEWALKS, CURB RAMPS AND STEPS.
- 6. CONSTRUCT SIDEWALKS, CURB RAMPS, STEPS, AND INSTALL PEDESTRIAN RAILS.
- 7. OPEN COMPLETED SIDEWALK TO PEDESTRIANS AS SOON AS POSSIBLE, WITH THE APPROVAL OF THE ENGINEER.
- 8. ADJUST PEDESTRIAN PUSH BUTTONS.
- 9. AFTER ALL SIDEWALK AND DRAINAGE IMPROVEMENTS ARE COMPLETE FOR ALL CORNERS, AND PLANE ASPHALT AS INDICATED, INSTALL TEMPORARY PAVEMENT MARKINGS AS NEEDED OR AS DIRECTED BY THE ENGINEER.
- 10. REMOVE SW3P ITEMS.

PHASE 2 STEP 1

1) ESTABLISH ADVANCE WARNING SIGNAGE, REMOVE OR COVER CONFLICTING EXISTING SIGNAGE, OR AS DIRECTED BY THE ENGINEER.

2) ASSEMBLE PLASTIC DRUMS AND SIGNAGE FOR LANE CLOSURES AS INDICATED ON THIS LAYOUT

3) PHASE 2 STEP 1 TRAFFIC CONTROL LAYOUT MAY ONLY BE UTILIZED DURING NIGHT TIME HOURS (9PM - 5AM).

4) WITH LANE CLOSURES ESTABLISHED, REMOVE EXISTING INLET TOP. FRAME AND POUR INLET CAP. IF THE INLET CAN NOT BE COMPLETED IN A SINGLE NIGHT, PLATE INLET WITH TRAFFIC RATED PLATE.

5) REMOVE EXISTING CURB, CONCRETE, AND OTHER MISCELLANEOUS MATERIALS. HAUL MATERIALS OFFSITE IN ACCORDANCE WITH THE CONTRACT DOCUMENTS

6) BACKFILL EXCAVATED AREAS NEAR PAVEMENT EDGES WITH LOOSE MATERIAL FOR PROPER SAFETY SLOPES (3:1 MAX).

7) PLACE STEEL REINFORCEMENT MATS

8) POUR CONCRETE PAVEMENT AND CURB

9) RESTORE TRAFFIC AT THE END OF EACH NIGHT, NO LANE CLOSURES MAY REMAIN DURING DAYTIME HOURS (5AM - 9PM).

PHASE 2 STEP 2

1) TIE AND PREP STEEL REINFORCEMENT FOR CONCRETE PAVEMENT AREAS, STEEL MATS MAY BE PREPARED OFFSITE.

2) COMPLETE FORMWORK, DOWELING INTO EXISTING PAVEMENT, STAGE MATERIALS AND PERFORM ANY MISCELLANEOUS PREPERATORY WORK REQUIRED PRIOR TO PLACING CONCRETE PAVEMENT

3) INSTALL FOUNDATION FOR ILLUMINATION POLE, REMOVE EXISTING ILLUMINATION ASSEMBLY, SAVE FOR RE-INSTALLATION. EXISTING ILLUMINATION MUST REMAIN ACTIVE, DEPLOY TEMPORARY ILLUMINATION IF THE EXISTING SYSTEM CANNOT MAINTAIN FUNCTIONALITY DURING NIGHTTIME HOURS

4) RE-ESTABLISH PHASE 2 STEP 1 CONFIGURATION FOR NIGHT TIME WORK, PLACE STEEL REINFORCEMENT MATS. POUR CONCRETE PAVEMENT AND CURB

5) INSTALL MISCELLANEOUS FLATWORK, SIGNING, SIGNAL EQUIPMENT

6. FORM SIDEWALKS, CURB RAMPS AND STEPS.

7. CONSTRUCT SIDEWALKS, CURB RAMPS, STEPS, AND INSTALL PEDESTRIAN RAILS.

8. OPEN COMPLETED SIDEWALK TO PEDESTRIANS AS SOON AS POSSIBLE, WITH THE APPROVAL OF THE ENGINEER.

9. ADJUST PEDESTRIAN PUSH BUTTONS.

10. AFTER ALL SIDEWALK AND DRAINAGE IMPROVEMENTS ARE COMPLETE FOR ALL CORNERS, AND PLANE ASPHALT AS INDICATED, INSTALL TEMPORARY PAVEMENT MARKINGS AS NEEDED OR AS DIRECTED BY THE ENGINEER.

11. REMOVE SW3P ITEMS.

3. SAFETY

1. THE CONTRACTOR WILL PROVIDE, CONSTRUCT AND MAINTAIN BARRICADES AND SIGNS IN ACCORDANCE WITH STATE STANDARDS BC (1-12)-14. ANY SIGNS REQUIRED THAT ARE NOT DETAILED IN THE STANDARD SHEETS SHALL BE IN CONFORMANCE WITH THE "TEXAS MANUAL ON UNIFORM TRAFFIC CONTROL DEVICES FOR STREETS AND HIGHWAYS" AND THE "STANDARD HIGHWAY SIGN DESIGNS FOR TEXAS."

2. BARRICADES AND WARNING SIGNS SHALL BE PLACED AS INDICATED ON THE PLANS. THIS SHALL BE CONSIDERED THE MINIMUM REQUIRED TO PROVIDE FOR THE SAFETY OF TRAFFIC DURING CONSTRUCTION. THE CONTRACTOR SHALL PROVIDE AND MAINTAIN OTHER SUCH BARRICADES AND SIGNS DEEMED NECESSARY BY THE ENGINEER OR AS DIRECTED BY FIELD CONDITIONS TO PROVIDE FOR THE PASSAGE OF TRAFFIC IN SAFETY AT ALL TIMES.

3. THE CONTRACTOR SHALL PROVIDE AND MAINTAIN FLAGGERS AS DIRECTED/APPROVED BY THE ENGINEER, AT SUCH POINTS, AND FOR SUCH PERIODS OF TIME AS MAY BE REQUIRED, TO PROVIDE FOR THE SAFETY OF THE TRAVELING PUBLIC AND THE CONTRACTORS PERSONNEL.

4. THE CONTRACTOR SHALL KEEP THE ROADWAY CLEAN AND FREE OF DIRT OR OTHER MATERIALS DURING HAULING OPERATIONS. IF THE CONTRACTOR DOES NOT MAINTAIN A CLEAN ROADWAY, THEY SHALL CEASE ALL CONSTRUCTION OPERATIONS, WHEN DIRECTED BY THE ENGINEER, TO CLEAN THE ROADWAY TO THE SATISFACTION OF THE ENGINEER.

4. HAULING EQUIPMENT

1. THE USE OF RUBBER-TIRED EQUIPMENT WILL BE REQUIRED FOR MOVING DIRT OR OTHER MATERIALS ALONG OR ACROSS PAVEMENTED SURFACES. WHERE THE CONTRACTOR DESIRES TO MOVE ANY EQUIPMENT NOT LICENSED FOR OPERATION ON PUBLIC HIGHWAYS, ON OR ACROSS PAVEMENT, THEY SHALL PROTECT THE PAVEMENT FROM DAMAGE AS DIRECTED/APPROVED BY THE ENGINEER.

2. THROUGHOUT CONSTRUCTION OPERATIONS, THE CONTRACTOR WILL BE REQUIRED TO CONDUCT THEIR HAULING OPERATIONS IN A MANNER SUCH THAT VEHICLES WILL NOT HAUL OVER PREVIOUSLY RECOMPACTED SUBGRADE OR COMPACTED BASE MATERIAL, EXCEPT IN SHORT SECTIONS FOR DUMPING MANIPULATIONS.


5. FINAL CLEAN UP

UPON COMPLETION OF THE WORK AND BEFORE FINAL ACCEPTANCE AND FINAL PAYMENT IS MADE, THE CONTRACTOR SHALL CLEAR AND REMOVE FROM THE SITE ALL SURPLUS AND DISCARDED MATERIALS AND DEBRIS OF EVERY KIND AND LEAVE THE ENTIRE PROJECT IN A SMOOTH, NEAT AND SIGHTLY CONDITION.

6. PAYMENT


ALL BARRICADES, SIGNS, AND FLAGGERS SHALL BE SUBSIDIARY TO ITEM 502 BARRICADES, SIGNS AND TRAFFIC HANDLING. ALL EROSION AND SEDIMENT CONTROL DEVICES WILL BE PAID FOR UNDER ITEM 506 TEMPORARY EROSION, SEDIMENTATION, AND ENVIRONMENTAL CONTROLS. ALL WORK ZONE PAVEMENT MARKINGS WILL BE PAID FOR UNDER ITEM 662 WORK ZONE PAVEMENT MARKINGS. ALL OTHER WORK AND MATERIALS SHALL BE SUBSIDIARY TO THE VARIOUS BID ITEMS UNLESS OTHERWISE INDICATED IN THE PLANS.

REV. NO.	DATE	DESCRIPTION	BY



**PAPE-DAWSON ENGINEERS**

SAN ANTONIO | AUSTIN | HOUSTON | FORT WORTH | DALLAS  
 2000 NW LOOP 410 | SAN ANTONIO, TX 78213 | 210.375.9000  
 TBPE FIRM REGISTRATION #470 | TBPLS FIRM REGISTRATION #10028800



Texas Department of Transportation  
© 2017

TRAFFIC CONTROL PLAN  
 NARRATIVE

SHEET 2 OF 2

DGN:	FED. RD. DIV. NO.:	STATE	FEDERAL AID PROJECT NO.			HIGHWAY NO.
CHK DGN:	6	TEXAS				VA
DWG:	DIST.	COUNTY	CONT. NO.	SECT. NO.	JOB NO.	SHEET NO.
CHK DWG:	SAT	BEXAR	0915	12	586	37

Plotted on: 10/27/2017

Design File name: P:\11135\01\design\Civil\TCP\1113501\_Schedule\_of\_Barricades.dgn

**TRAFFIC CONTROL PLAN ITEMS**

LOCATION	PROJECT LIMIT SIGNING											PEDESTRIAN SIGNING			
1	CW20-1D (36x36)	G20-2 (48x24)	G20-1aT	G20-1T	G20-2bT (48x24)	G20-5T (48x24)	G20-6T (48x30)	G20-9TP	G20-10T (48x60)	R20-3T (48x42)	R20-5T (24x30)	R20-5aTP PLAQUE (24x12)	R9-8	R9-9 24" x 12"	R9-10DBL 24" x 12"
2	X					X	X	X	X	X	X	X			
3	X	X	X	X	X								X	X	X

**TRAFFIC CONTROL PLAN ITEMS (CONTINUED)**

LOCATION	PEDESTRIAN SIGNING (CONTINUED)						PED DEVICE	PHASE SIGNING							
1	R9-11aR 24" x 12"	R9-11aL 24" x 12"	M4-8A (18x24)	M4-9A (24x30)	M4-9B L OR R (24x30)	MB-9C L OR R (24x30)	CHANNEL BARRICADE	CW1-6A (36x36)	CW3-2 (36x36)	CW3-2 (36 x 36)	CW9-1 L OR R (30x30)	CW9-2 L OR R (30x30)	CW13-1 (18x18)	CW14-4T (36x36)	CW20-1A
2															
3	X	X	X	X	X	X	X	X	X	X	X	X	X	X	X

**TRAFFIC CONTROL PLAN ITEMS (CONTINUED)**

LOCATION	PHASE SIGNING (CONTINUED)														
1	CW20-1B	CW20-1C	CW20-2D	CW20-5 L OR R	CW20-7A	CW21-1T	CW21-5a L OR R	CW27-1T (48 X 48)	D70A	M4-2	M4-5	M4-8	M4-8A	M4-9 L,R,S	M4-9A L,R,S
2						X									
3	X	X	X	X	X		X	X	X	X	X	X	X	X	X

**TRAFFIC CONTROL PLAN ITEMS (CONTINUED)**

LOCATION	PHASE SIGNING (CONTINUED)										
1	M4-10 L OR R	R1-1 (36x36)	R1-2 (36x36x36)	R3-2	R5-1	R6-1 L OR R	R8-3	R1-2 (36 X 36)	CW4-1 (36 X 36)	CW20-1D (36 X 36)	TEXT
2											
3	X	X	X	X	X	X	X	X	X	X	X

**P.C.M.S. SCHEDULE\***

BASE	DAY
ADVANCED NOTICE	5
<b>TRAFFIC CONTROL NON SP 537</b>	
ADJUST BARRICADES	60
INSTALL SW3P	12
DEMO EXISTING	120
GRADE / FORM / POUR	215
REMOVE SW3P	10
<b>TRAFFIC CONTROL SP 537</b>	
ADJUST BARRICADES	2
INSTALL SW3P	2
PHASE 1 STEP 1	5
PHASE 1 STEP 1A	2
PHASE 1 STEP 2	14
PHASE 2 STEP 1	5
PHASE 2 STEP 2	35
REMOVE SW3P	2
<b>PROJECT TOTAL</b>	<b>489</b>

\* BASED ON FIVE-DAY WORK WEEK

**PHASE DEVICES**

LOCATION								
1								
2								
3	X	X		X	X	X	X	X

**GENERAL NOTES - BARRICADES:**  
 LOCATION NO. 1 TO BE USED AT BEGINNING OF THE PROJECT.  
 LOCATION NO. 2 TO BE USED AT THE END OF THE PROJECT.  
 LOCATION NO. 3 TO BE USED THROUGHOUT THE COURSE OF THE PROJECT AS DIRECTED BY THE ENGINEER  
 SEE TCP LAYOUT - "TCP LINE DIAGRAM SHEETS" FOR DETAILS.

**NOTE:**  
 1. CERTAIN SIGNS MUST BE USED IN CONJUNCTION WITH OTHER SIGNS. EXAMPLE: "FLAGGER AHEAD" MUST HAVE A "BE PREPARED TO STOP".  
 2. BARRICADES AND WARNING SIGNS ON THIS SHEET ARE THE MINIMUM CONSTRUCTION ZONE. SIGNING. ADDITIONAL BARRICADES, WARNING SIGNS, ARROW PANELS, CONES, ETC. REQUIRED IN ACCORDANCE WITH CURRENT BC STANDARDS AND THE TEXAS MUTCD MAY REQUIRED IN AREAS OF ACTUAL CONSTRUCTION.  
 3. A DISTANCE PLAQUE IN FEET OR MILES MAY REQUIRED FOR USE IN CONJUNCTION WITH WARNING SIGNS.  
 4. IMPLEMENT DETOURS IN ACCORDANCE WITH THE TEXAS MUTCD. USE CHANGEABLE MESSAGE BOARDS TO GUIDE MOTORISTS THROUGH THE DETOUR.

REV. NO.	DATE	DESCRIPTION	BY

SAN ANTONIO | AUSTIN | HOUSTON | FORT WORTH | DALLAS  
 2000 NW LOOP 410 | SAN ANTONIO, TX 78213 | 210.375.9000  
 TBPE FIRM REGISTRATION #470 | TBPLS FIRM REGISTRATION #10028800

© 2017

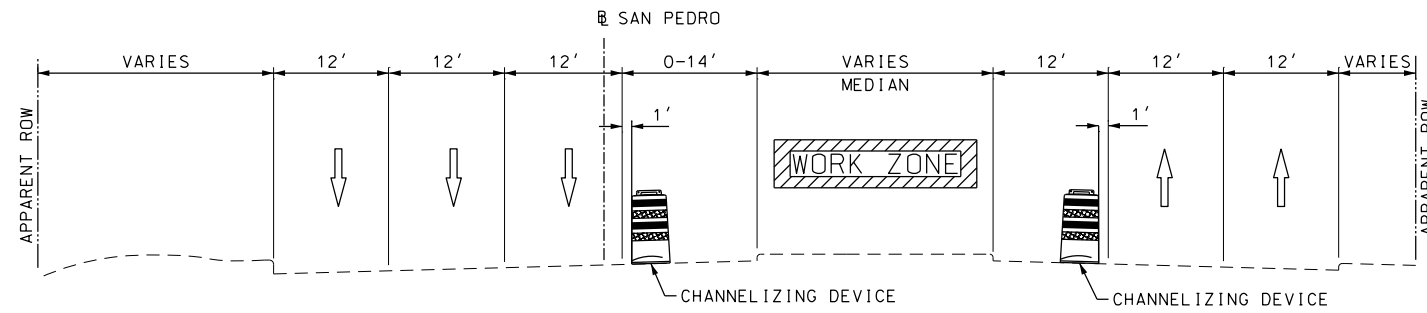
**SAN PEDRO AVE  
 TRANSIT CENTER**  
**SCHEDULE OF BARRICADES  
 AND ADVANCE WARNING  
 DEVICES**

SHEET 1 OF 1

DGN:	FED. RD. DIV. NO.:	STATE:	FEDERAL AID PROJECT NO.:	HIGHWAY NO.:		
CHK DGN:	6	TEXAS		VA		
DWG:	DIST.:	COUNTY:	CONT. NO.:	SECT. NO.:	JOB NO.:	SHEET NO.:
CHK DWG:	SAT	BEXAR	0915	12	586	

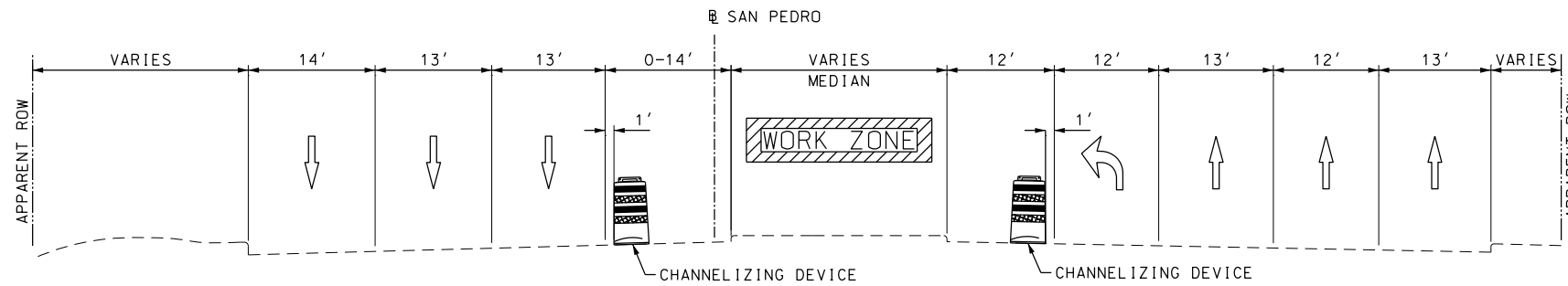
Plotted on: 10/27/2017

Design File name: P:\111\35\01\design\Civil\General\1113501\_SANPEDRO\_TYP\_TCP\_SEC01.dgn



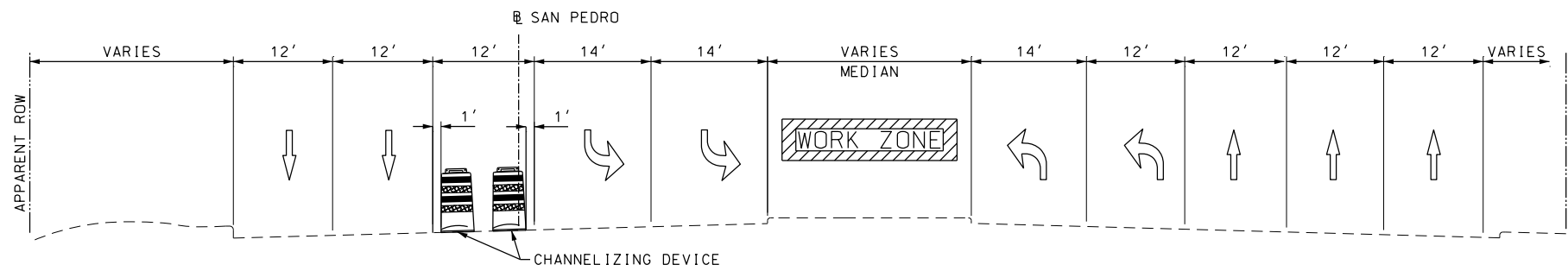
PHASE 1 STEP 1 TYPICAL SECTION

SAN PEDRO  
NOT TO SCALE  
FROM STA 605+00 TO STA 610+00



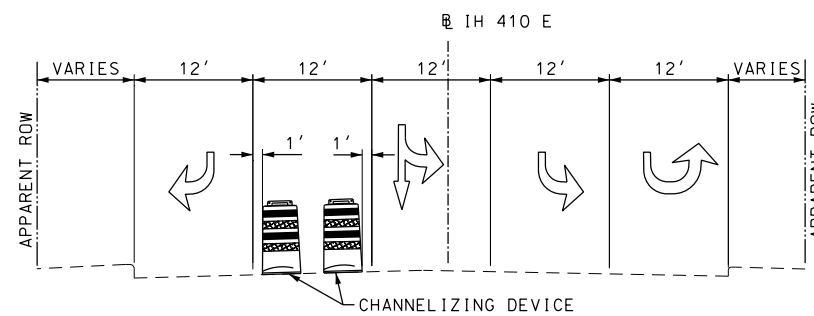
PHASE 1 STEP 1 TYPICAL SECTION

SAN PEDRO  
NOT TO SCALE  
FROM STA 610+00 TO STA 614+00



PHASE 1 STEP 1 TYPICAL SECTION

SAN PEDRO  
NOT TO SCALE  
FROM STA 614+00 TO 320' NORTH OF IH 410 W



PHASE 1 STEP 1 TYPICAL SECTION

IH 410 E  
NOT TO SCALE  
FROM 400' WEST OF SAN PEDRO AVE TO SAN PEDRO AVE

DESIGN

INTERIM REVIEW  
DOCUMENT INCOMPLETE. NOT INTENDED FOR PERMIT, BIDDING OR CONSTRUCTION.  
ENGINEER: JOHN A. TYLER  
P.E. SERIAL NO: 105193  
DATE: 10/27/2017

REVIEW AND APPROVAL

INTERIM REVIEW  
DOCUMENT INCOMPLETE. NOT INTENDED FOR PERMIT, BIDDING OR CONSTRUCTION.  
ENGINEER: JAMES A. LUTZ  
P.E. SERIAL NO: 84722  
DATE: 10/27/2017

REV. NO.	DATE	DESCRIPTION	BY



**PAPE-DAWSON ENGINEERS**  
SAN ANTONIO | AUSTIN | HOUSTON | FORT WORTH | DALLAS  
2000 NW LOOP 410 | SAN ANTONIO, TX 78213 | 210.375.9000  
TBPE FIRM REGISTRATION #470 | TBPLS FIRM REGISTRATION #10028800



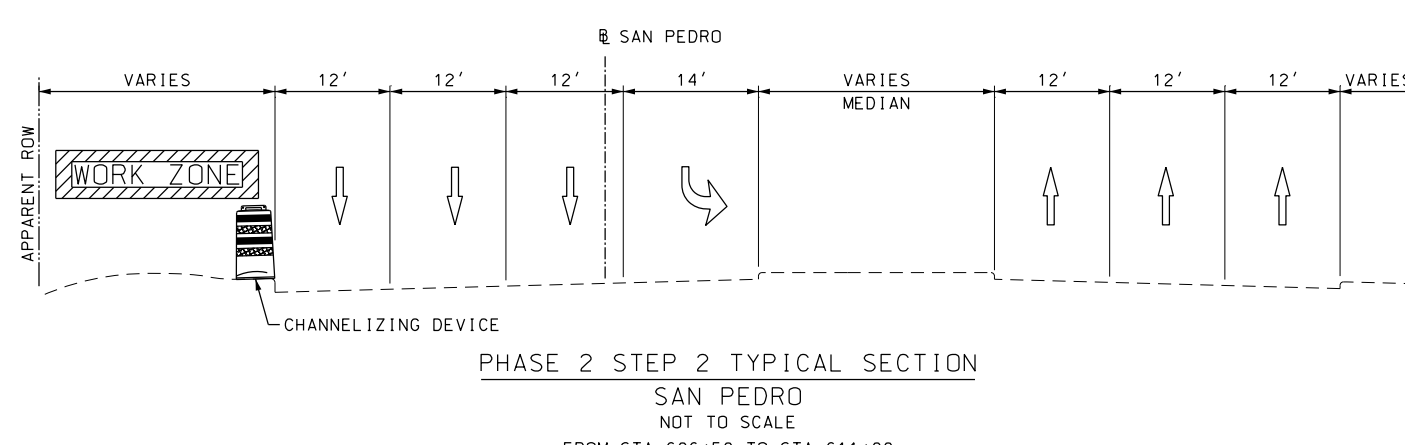
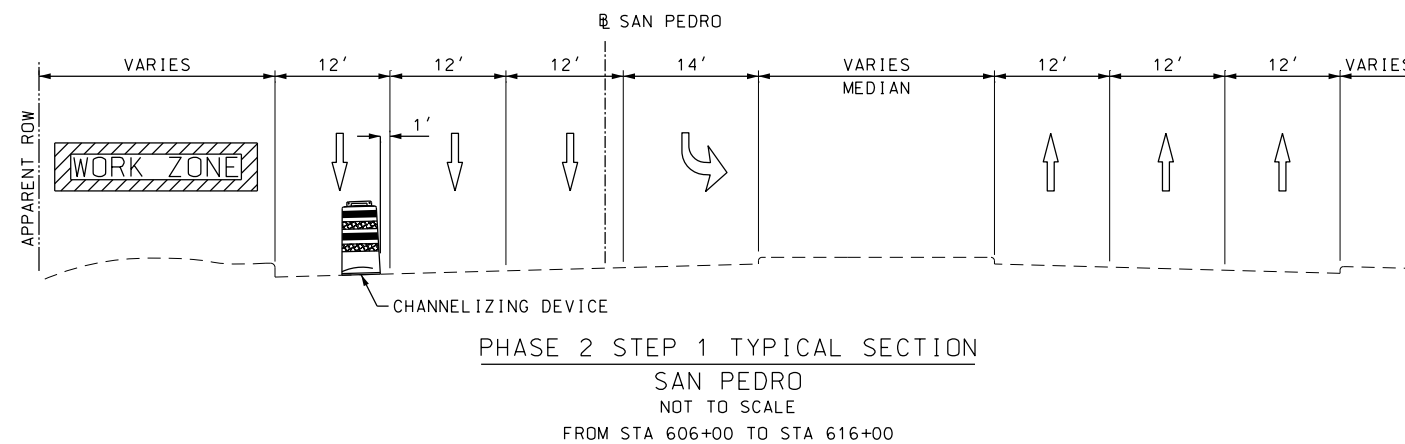
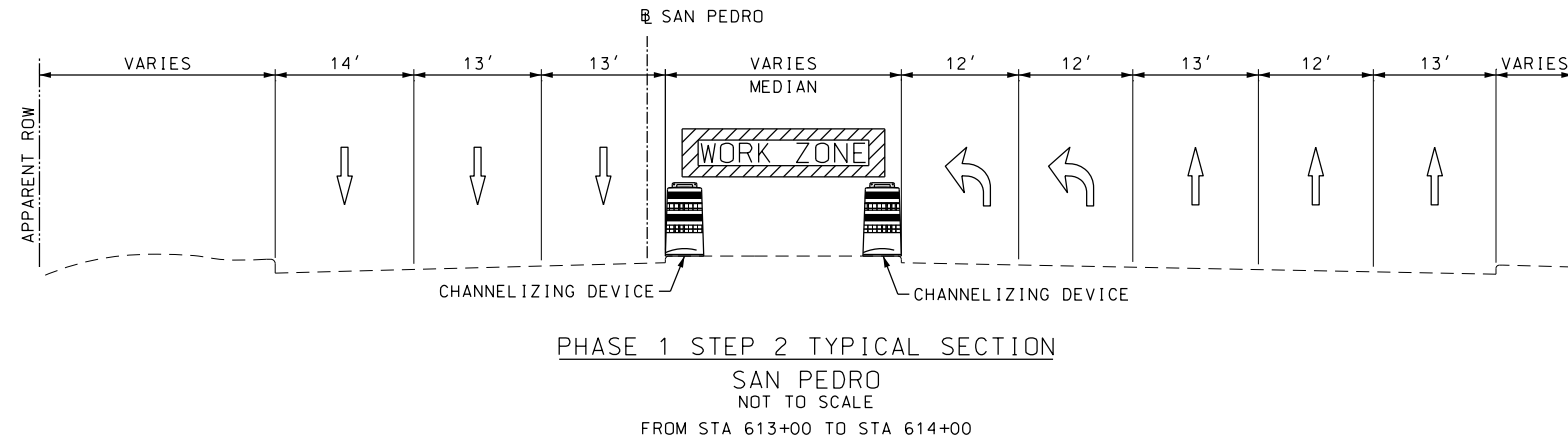
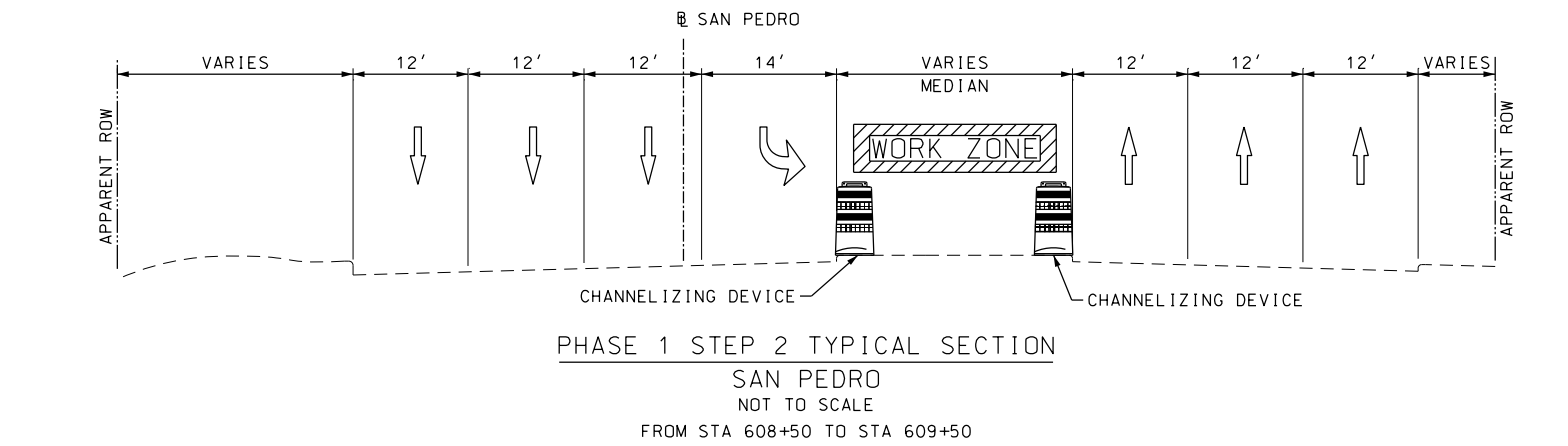
SAN PEDRO AVE  
TRANSIT CENTER  
TRAFFIC CONTROL PLAN  
TYPICAL SECTION

SHEET 1 OF 2

DGN:	FED. RD. DIV. NO.	STATE	FEDERAL AID PROJECT NO.			HIGHWAY NO.
CHK DGN:	6	TEXAS				VA
DWG:	DIST.	COUNTY	CONT. NO.	SECT. NO.	JOB NO.	SHEET NO.
CHK DWG:	SAT	BEXAR	0915	12	586	48

Plotted on: 10/27/2017

Design File name: P:\111135\01\design\Civil\General\1113501\_SANPEDRO\_TYP\_TCP\_SEC02.dgn



DESIGN  
INTERIM REVIEW  
DOCUMENT INCOMPLETE. NOT INTENDED FOR PERMIT, BIDDING OR CONSTRUCTION.  
ENGINEER: JOHN A. TYLER  
P.E. SERIAL NO: 105193  
DATE: 10/27/2017

REVIEW AND APPROVAL  
INTERIM REVIEW  
DOCUMENT INCOMPLETE. NOT INTENDED FOR PERMIT, BIDDING OR CONSTRUCTION.  
ENGINEER: JAMES A. LUTZ  
P.E. SERIAL NO: 84722  
DATE: 10/27/2017

REV. NO.	DATE	DESCRIPTION	BY

**PAPE-DAWSON ENGINEERS**  
SAN ANTONIO | AUSTIN | HOUSTON | FORT WORTH | DALLAS  
2000 NW LOOP 410 | SAN ANTONIO, TX 78213 | 210.375.9000  
TBPE FIRM REGISTRATION #470 | TBPLS FIRM REGISTRATION #10028800



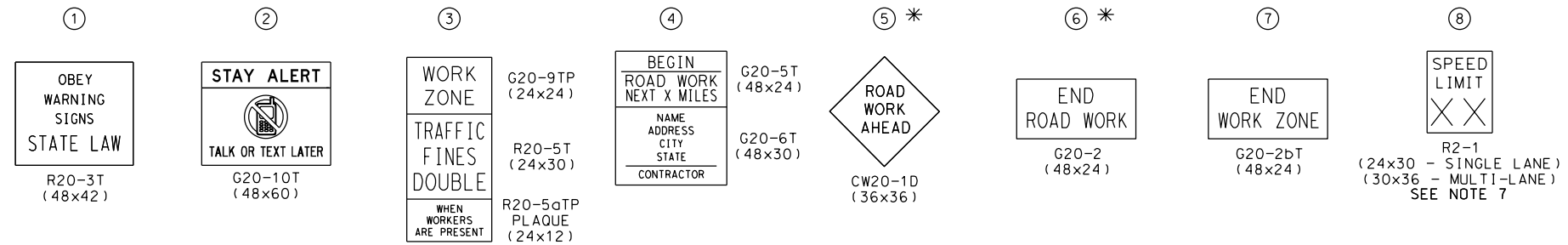
SAN PEDRO AVE  
TRANSIT CENTER  
TRAFFIC CONTROL PLAN  
TYPICAL SECTION

SHEET 2 OF 2

DGN:	FED. RD. DIV. NO.:	STATE:	FEDERAL AID PROJECT NO.:	HIGHWAY NO.:
CHK DGN:	6	TEXAS		VA
DWG:	DIST.:	COUNTY:	CONT. NO.:	SECT. NO.:
CHK DWG:	SAT	BEXAR	0915	12
			JOB NO.:	SHEET NO.:
			586	49

Plotted on: 10/27/2017

Design File name: P:\11135\01\design\Civil\TCP\1113501\_TCP\_LINEDIAGRAMS.dgn



- NOTE:
- CONTRACTOR SHALL PLACE ADVANCE WARNING SIGNS ACCORDING TO DISTANCE "X" ON STANDARD BC(2)-14
  - CONTRACTOR SHALL FIELD VERIFY POSTED SPEED FOR "X" SPACING
  - SIGN LOCATIONS MAY BE ADJUSTED DUE TO CONDITIONS AS APPROVED BY THE ENGINEER
  - CONFLICTING SIGNS SHALL BE COVERED BY CONTRACTOR OR AS DIRECTED BY THE ENGINEER
  - SIGNS SHOWN SHALL BE COORDINATED WITH SPECIFIC WORK TRAFFIC CONTROL DETAILS INCLUDED IN THE PLANS
  - SIGNS 5 & 6 TO BE MOVED AND PLACED ONLY IN ADVANCE OF WHERE WORK IS BEING PERFORMED
  - SIGN 8 SHALL DISPLAY APPROPRIATE SPEED LIMIT IN PLACE OF "XX"

LEGEND	
	CONSTRUCTION WARNING SIGN
	TRAFFIC FLOW
	WORK ZONE

POSTED SPEED	LONGITUDINAL BUFFER SPACE "Y" DISTANCE
MPH	FT (APPROX)
30	90
35	120
40	155
45	195
50	240
55	295
60	350
65	410
70	475

\* SEE NOTE 6 FOR TYPICAL USE OF SIGNS 5 & 6

DESIGN  
**INTERIM REVIEW**  
 DOCUMENT INCOMPLETE. NOT INTENDED FOR PERMIT, BIDDING OR CONSTRUCTION.  
 ENGINEER: JOHN A. TYLER  
 P.E. SERIAL NO: 105193  
 DATE: 10/27/2017

REVIEW AND APPROVAL  
**INTERIM REVIEW**  
 DOCUMENT INCOMPLETE. NOT INTENDED FOR PERMIT, BIDDING OR CONSTRUCTION.  
 ENGINEER: JAMES A. LUTZ  
 P.E. SERIAL NO: 84722  
 DATE: 10/27/2017

NOT TO SCALE

REV. NO.	DATE	DESCRIPTION	BY

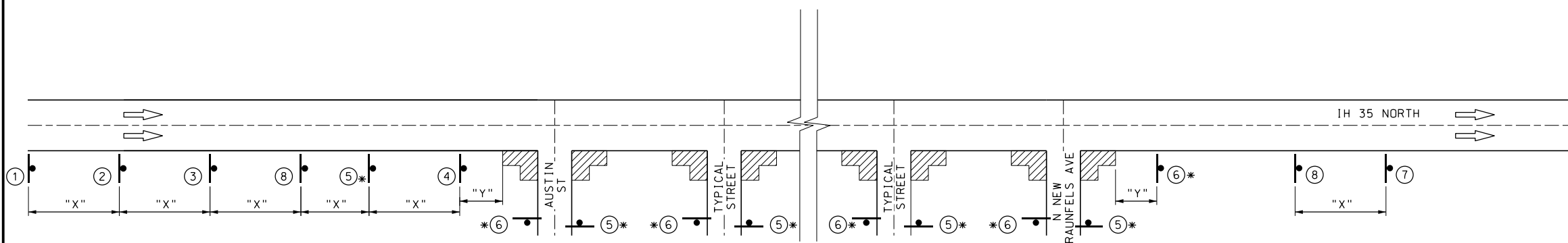
**PAPE-DAWSON ENGINEERS**  
 SAN ANTONIO | AUSTIN | HOUSTON | FORT WORTH | DALLAS  
 2000 NW LOOP 410 | SAN ANTONIO, TX 78213 | 210.375.9000  
 TBPE FIRM REGISTRATION #470 | TBPLS FIRM REGISTRATION #10028800



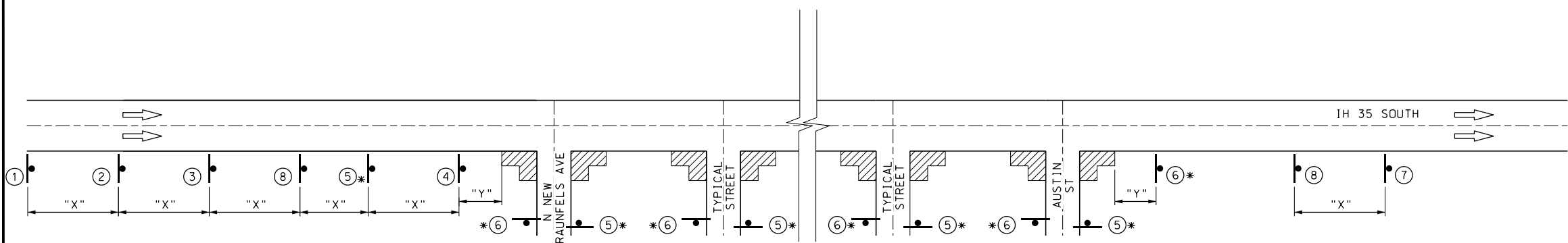
TRAFFIC CONTROL PLAN  
 ADVANCE WARNING  
 DEVICES

SHEET 1 OF 3

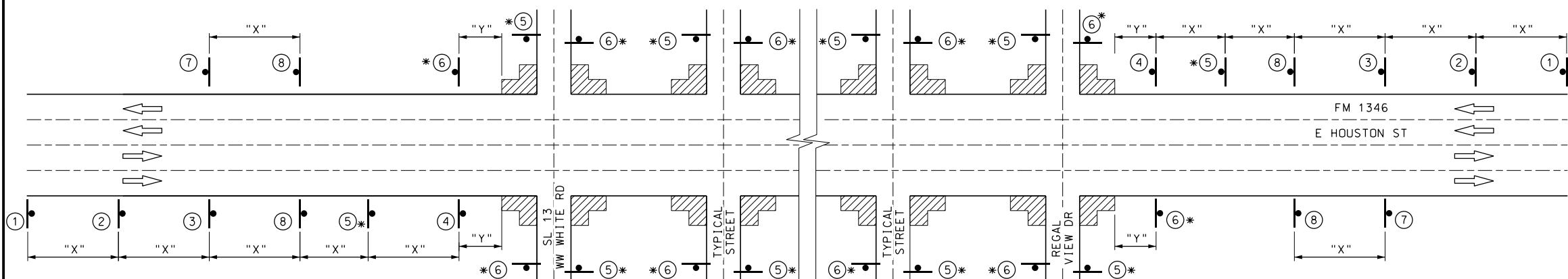
DGN:	FED. NO. DIV. NO.:	STATE:	FEDERAL AID PROJECT NO.:			HIGHWAY NO.:
CHK DGN:	6	TEXAS				VA
DWG:	DIST.:	COUNTY:	CONT. NO.:	SECT. NO.:	JOB NO.:	SHEET NO.:
CHK DWG:	SAT	BEXAR	0915	12	586	38



IH 35 NORTHBOUND FROM AUSTIN ST TO N NEW BRAUNFELS AVE  
 SHEETS 88 - 100 - REFER TO TCP (1-1a) FOR ADDITIONAL INFORMATION



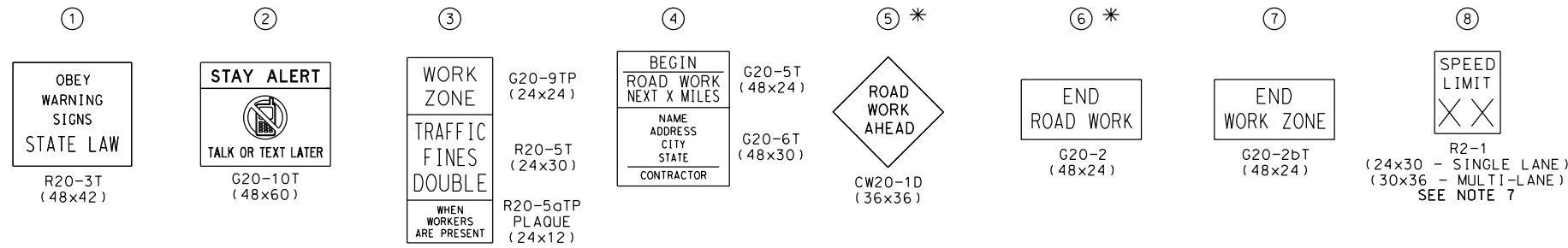
IH 35 SOUTHBOUND FROM N NEW BRAUNFELS AVE TO AUSTIN ST  
 SHEETS 102 - 113 - REFER TO TCP (1-1a) FOR ADDITIONAL INFORMATION



FM 1346 FROM SL 13 TO REGAL VIEW DR  
 SHEETS 114 - 126 - REFER TO TCP (2-6a) FOR ADDITIONAL INFORMATION

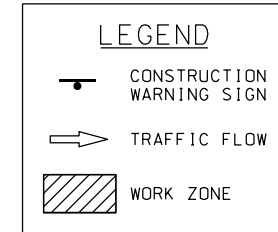
Plotted on: 10/27/2017

Design File name: P:\111\35\01\design\Civil\TCP\1113501\_TCP\_LINED IAGRAMS\_2.dgn



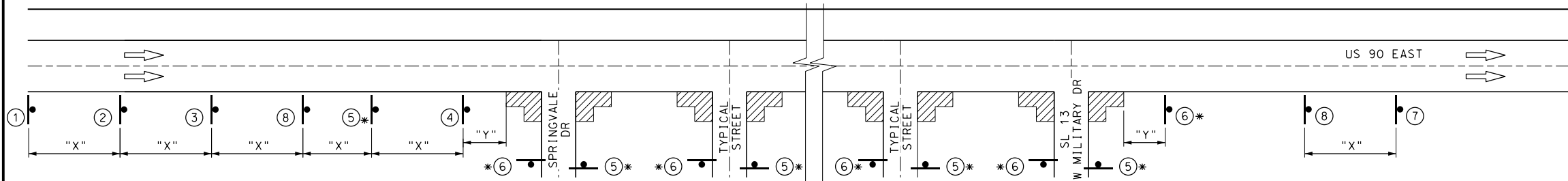
NOTE:

- CONTRACTOR SHALL PLACE ADVANCE WARNING SIGNS ACCORDING TO DISTANCE "X" ON STANDARD BC(2)-14
- CONTRACTOR SHALL FIELD VERIFY POSTED SPEED FOR "X" SPACING
- SIGN LOCATIONS MAY BE ADJUSTED DUE TO CONDITIONS AS APPROVED BY THE ENGINEER
- CONFLICTING SIGNS SHALL BE COVERED BY CONTRACTOR OR AS DIRECTED BY THE ENGINEER
- SIGNS SHOWN SHALL BE COORDINATED WITH SPECIFIC WORK TRAFFIC CONTROL DETAILS INCLUDED IN THE PLANS
- SIGNS 5 & 6 TO BE MOVED AND PLACED ONLY IN ADVANCE OF WHERE WORK IS BEING PERFORMED
- SIGN 8 SHALL DISPLAY APPROPRIATE SPEED LIMIT IN PLACE OF "XX"



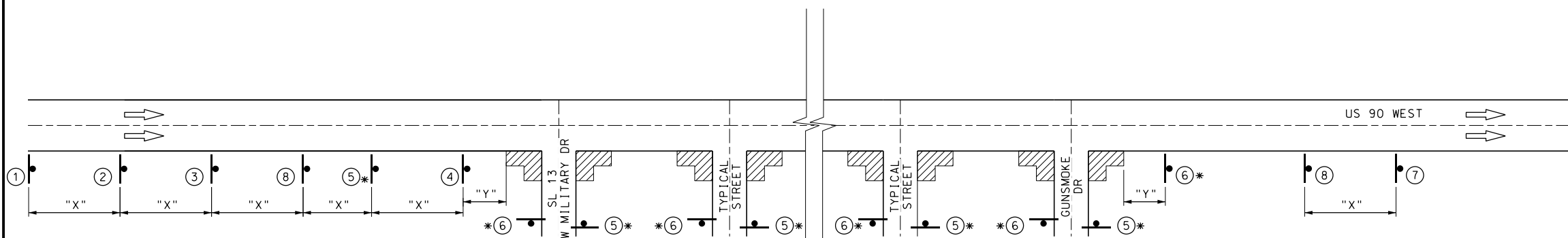
POSTED SPEED	LONGITUDINAL BUFFER SPACE "Y" DISTANCE
	MPH
30	90
35	120
40	155
45	195
50	240
55	295
60	350
65	410
70	475

\* SEE NOTE 6 FOR TYPICAL USE OF SIGNS 5 & 6



US 90 EASTBOUND FROM SPRINGVALE DR TO SL 13

SHEETS 133 - 141 - REFER TO TCP (2-6a) FOR ADDITIONAL INFORMATION



US 90 WESTBOUND FROM SL 13 TO GUNSMOKE DR

SHEETS 142 - 152 - REFER TO TCP (2-6a) FOR ADDITIONAL INFORMATION

DESIGN

INTERIM REVIEW  
 DOCUMENT INCOMPLETE. NOT INTENDED FOR PERMIT, BIDDING OR CONSTRUCTION.  
 ENGINEER: JOHN A. TYLER  
 P.E. SERIAL NO: 105193  
 DATE: 10/27/2017

REVIEW AND APPROVAL

INTERIM REVIEW  
 DOCUMENT INCOMPLETE. NOT INTENDED FOR PERMIT, BIDDING OR CONSTRUCTION.  
 ENGINEER: JAMES A. LUTZ  
 P.E. SERIAL NO: 84722  
 DATE: 10/27/2017

NOT TO SCALE

REV. NO.	DATE	DESCRIPTION	BY

**Pape-Dawson Engineers**  
 SAN ANTONIO | AUSTIN | HOUSTON | FORT WORTH | DALLAS  
 2000 NW LOOP 410 | SAN ANTONIO, TX 78213 | 210.375.9000  
 TBPE FIRM REGISTRATION #470 | TBPLS FIRM REGISTRATION #10028800



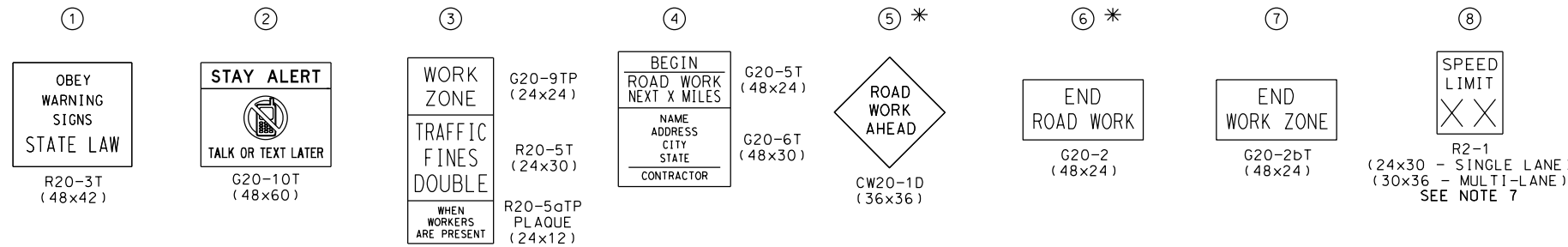
TRAFFIC CONTROL PLAN  
 ADVANCE WARNING  
 DEVICES

SHEET 2 OF 3

DGN:	FED. NO. DIV. NO.	STATE	FEDERAL AID PROJECT NO.			HIGHWAY NO.
CHK DGN:	6	TEXAS				VA
DWG:	DIST.	COUNTY	CONT. NO.	SECT. NO.	JOB NO.	SHEET NO.
CHK DWG:	SAT	BEXAR	0915	12	586	39

Plotted on: 10/27/2017

Design File name: P:\11135\01\design\Civil\TCP\1113501\_TCP\_LINEDIAGRAMS\_3.dgn



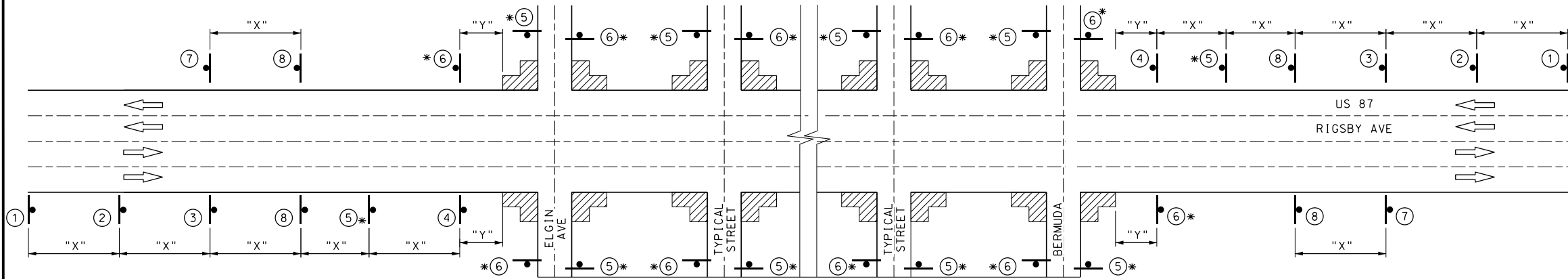
- NOTE:
- CONTRACTOR SHALL PLACE ADVANCE WARNING SIGNS ACCORDING TO DISTANCE "X" ON STANDARD BC(2)-14
  - CONTRACTOR SHALL FIELD VERIFY POSTED SPEED FOR "X" SPACING
  - SIGN LOCATIONS MAY BE ADJUSTED DUE TO CONDITIONS AS APPROVED BY THE ENGINEER
  - CONFLICTING SIGNS SHALL BE COVERED BY CONTRACTOR OR AS DIRECTED BY THE ENGINEER
  - SIGNS SHOWN SHALL BE COORDINATED WITH SPECIFIC WORK TRAFFIC CONTROL DETAILS INCLUDED IN THE PLANS
  - SIGNS 5 & 6 TO BE MOVED AND PLACED ONLY IN ADVANCE OF WHERE WORK IS BEING PERFORMED
  - SIGN 8 SHALL DISPLAY APPROPRIATE SPEED LIMIT IN PLACE OF "XX"

LEGEND

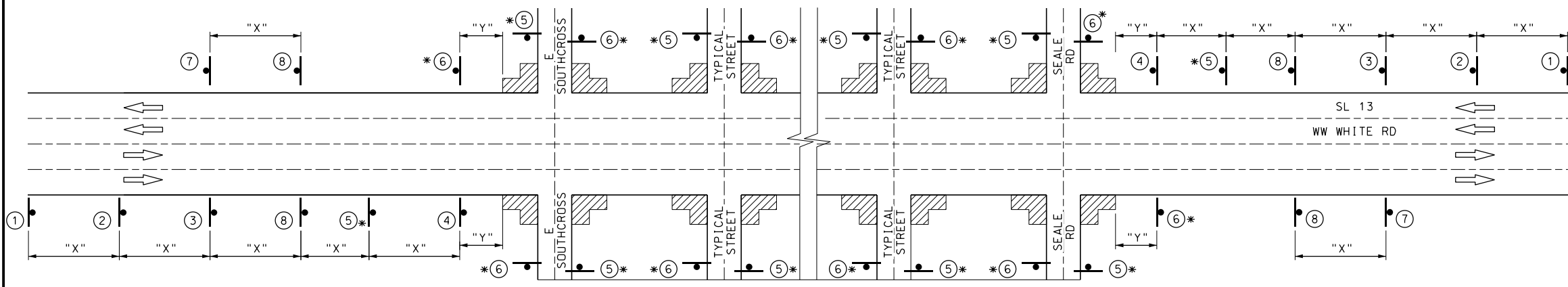
- CONSTRUCTION WARNING SIGN
- TRAFFIC FLOW
- WORK ZONE

POSTED SPEED	LONGITUDINAL BUFFER SPACE "Y" DISTANCE
MPH	FT (APPROX)
30	90
35	120
40	155
45	195
50	240
55	295
60	350
65	410
70	475

\* SEE NOTE 6 FOR TYPICAL USE OF SIGNS 5 & 6



US 87 FROM ELGIN AVE TO BERMUDA  
SHEETS 205-285 - REFER TO TCP (1-4a) FOR ADDITIONAL INFORMATION



SL 13 FROM E SOUTHCROSS TO SEALE RD  
SHEETS 153-166, 189-203 - REFER TO TCP (1-1b) FOR ADDITIONAL INFORMATION  
SHEETS 167-188 - REFER TO TCP (1-4a) FOR ADDITIONAL INFORMATION

DESIGN  
INTERIM REVIEW  
DOCUMENT INCOMPLETE. NOT INTENDED FOR PERMIT, BIDDING OR CONSTRUCTION.  
ENGINEER: JOHN A. TYLER  
P.E. SERIAL NO: 105193  
DATE: 10/27/2017

REVIEW AND APPROVAL  
INTERIM REVIEW  
DOCUMENT INCOMPLETE. NOT INTENDED FOR PERMIT, BIDDING OR CONSTRUCTION.  
ENGINEER: JAMES A. LUTZ  
P.E. SERIAL NO: 84722  
DATE: 10/27/2017

NOT TO SCALE

REV. NO.	DATE	DESCRIPTION	BY

**PAPE-DAWSON ENGINEERS**  
SAN ANTONIO | AUSTIN | HOUSTON | FORT WORTH | DALLAS  
2000 NW LOOP 410 | SAN ANTONIO, TX 78213 | 210.375.9000  
TBPE FIRM REGISTRATION #470 | TBPLS FIRM REGISTRATION #10028800



TRAFFIC CONTROL PLAN  
ADVANCE WARNING  
DEVICES

SHEET 3 OF 3

DGN:	FED. NO. DIV. NO.:	STATE:	FEDERAL AID PROJECT NO.:			HIGHWAY NO.:
CHK DGN:	6	TEXAS				VA
DWG:	DIST.:	COUNTY:	CONT. NO.:	SECT. NO.:	JOB NO.:	SHEET NO.:
CHK DWG:	SAT	BEXAR	0915	12	586	40

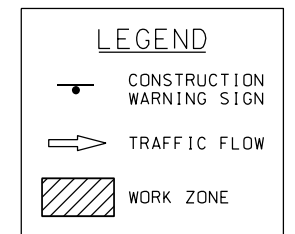


Plotted on: 10/27/2017

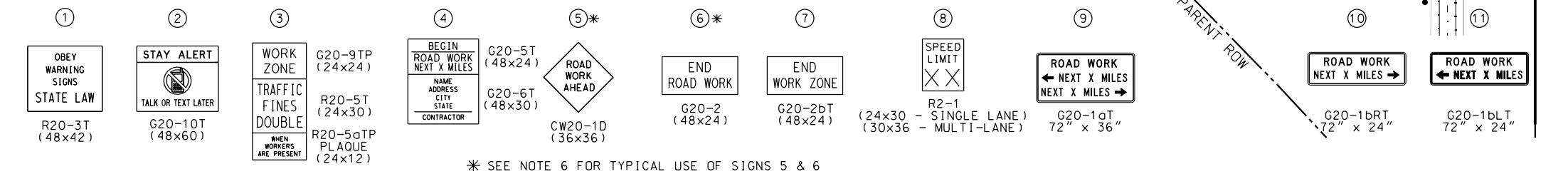
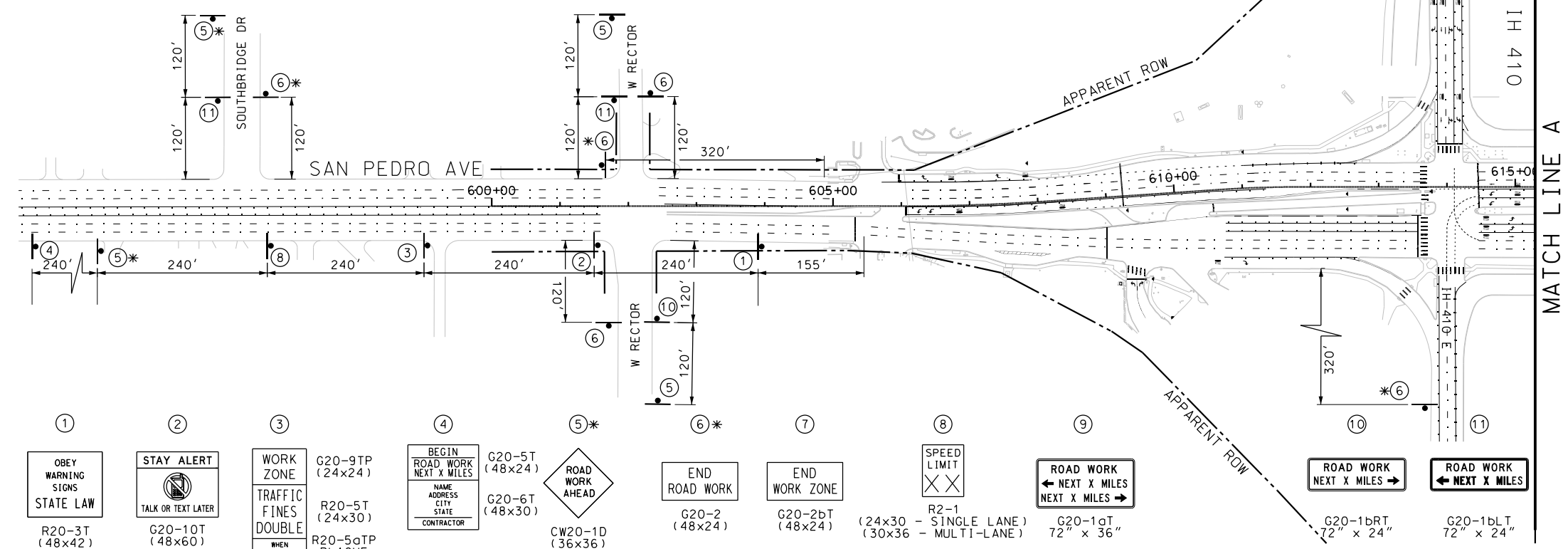
Design File name: P:\111\35\01\design\Civil\TCP\1113501\_SanPedro\_Advance\_Warning\_Sign\_Layout.dgn

MATCH LINE B  
SEE SHEET 42

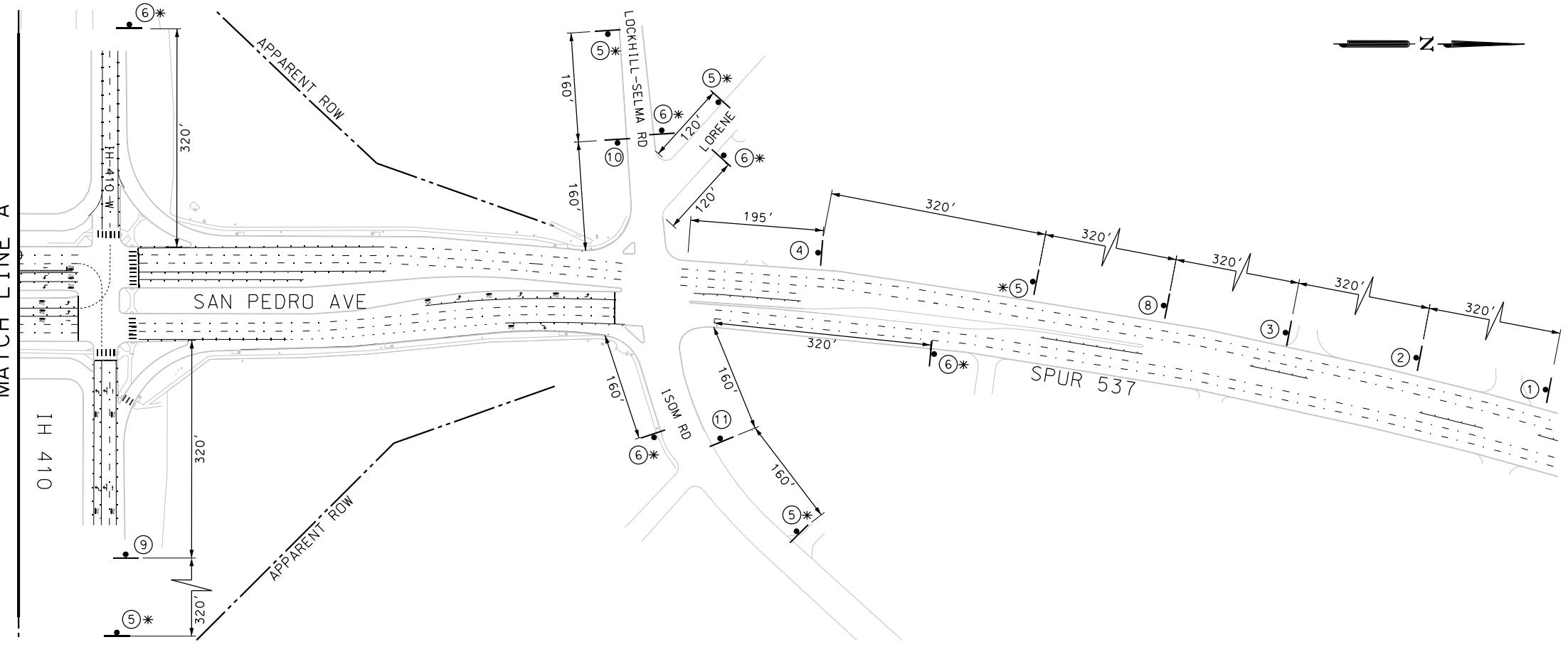
- NOTES:
1. CONTRACTOR SHALL PLACE ADVANCE WARNING SIGNS ACCORDING TO DISTANCE "X" ON STANDARD BC(2)-14
  2. CONTRACTOR SHALL FIELD VERIFY POSTED SPEED FOR "X" SPACING
  3. SIGN LOCATIONS MAY BE ADJUSTED DUE TO CONDITIONS AS APPROVED BY THE ENGINEER
  4. CONFLICTING SIGNS SHALL BE COVERED BY CONTRACTOR OR AS DIRECTED BY THE ENGINEER
  5. SIGNS SHOWN SHALL BE COORDINATED WITH SPECIFIC WORK TRAFFIC CONTROL DETAILS INCLUDED IN THE PLANS
  6. SIGNS 5 & 6 TO BE MOVED AND PLACED ONLY IN ADVANCE OF WHERE WORK IS BEING PERFORMED
  7. SIGN 8 SHALL DISPLAY APPROPRIATE SPEED LIMIT IN PLACE OF "XX"



POSTED SPEED	LONGITUDINAL BUFFER SPACE
MPH	FT (APPROX)
30	90
35	120
40	155
45	195
50	240
55	295
60	350
65	410
70	475



\* SEE NOTE 6 FOR TYPICAL USE OF SIGNS 5 & 6



DESIGN  
INTERIM REVIEW  
DOCUMENT INCOMPLETE. NOT INTENDED FOR PERMIT, BIDDING OR CONSTRUCTION.  
ENGINEER: JOHN A. TYLER  
P.E. SERIAL NO: 105193  
DATE: 10/27/2017

REVIEW AND APPROVAL  
INTERIM REVIEW  
DOCUMENT INCOMPLETE. NOT INTENDED FOR PERMIT, BIDDING OR CONSTRUCTION.  
ENGINEER: JAMES A. LUTZ  
P.E. SERIAL NO: 84722  
DATE: 10/27/2017

SCALE: PLAN NTS

REV. NO.	DATE	DESCRIPTION	BY

**PAPE-DAWSON ENGINEERS**  
SAN ANTONIO | AUSTIN | HOUSTON | FORT WORTH | DALLAS  
2000 NW LOOP 410 | SAN ANTONIO, TX 78213 | 210.375.9000  
TBPE FIRM REGISTRATION #470 | TBPLS FIRM REGISTRATION #10028800



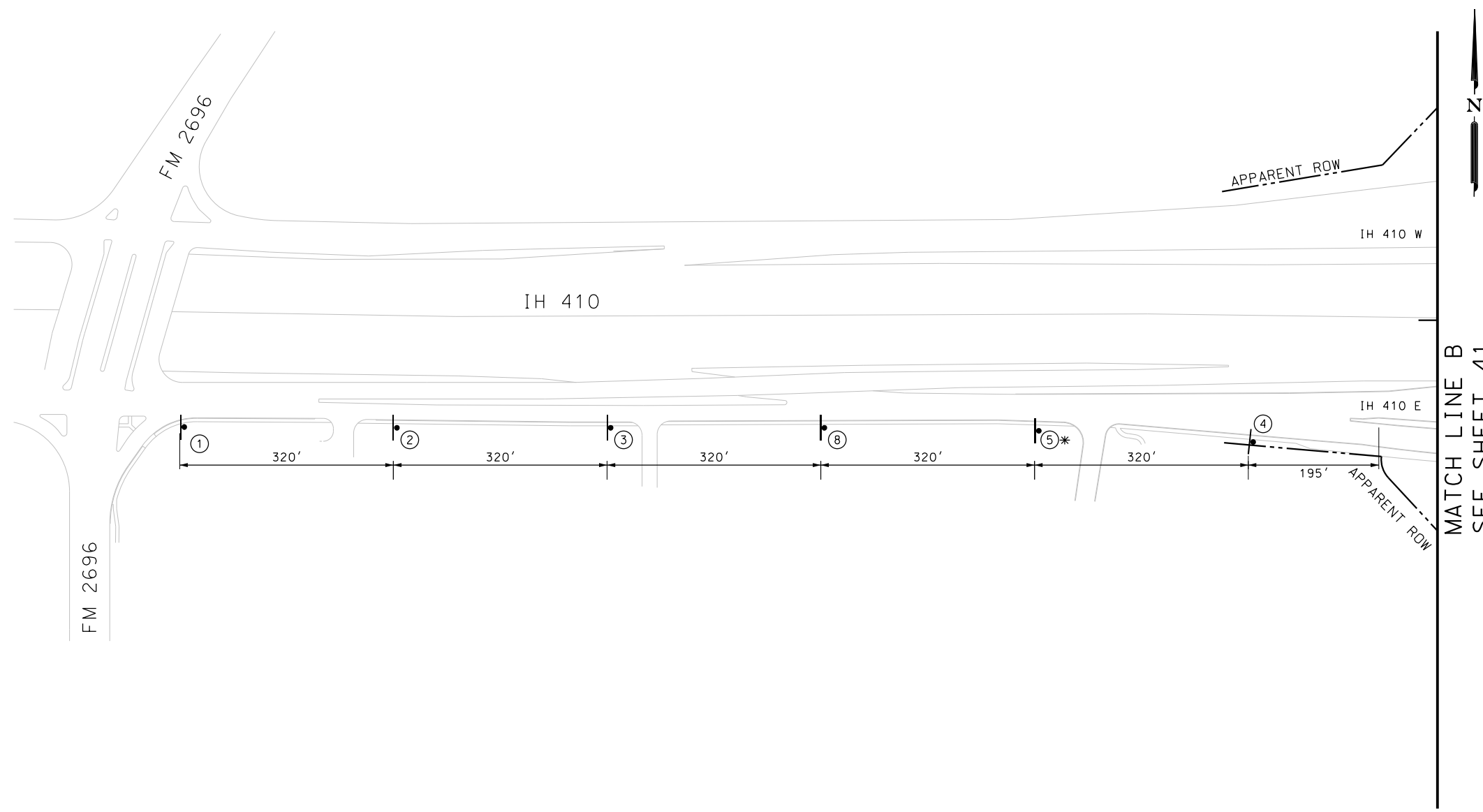
SAN PEDRO AVE  
TRANSIT CENTER  
ADVANCE WARNING  
SIGN LAYOUT

SHEET 1 OF 2

DGN:	FED. RD. DIV. NO.	STATE	FEDERAL AID PROJECT NO.	HIGHWAY NO.		
CHK DGN:	6	TEXAS		VA		
DWG:	DIST.	COUNTY	CONT. NO.	SECT. NO.	JOB NO.	SHEET NO.
CHK DWG:	SAT	BEXAR	0915	12	586	41

Plotted on: 10/27/2017

Design File name: P:\111\35\01\des\ign\Civil\TCP\1113501\_SanPedro\_Advance\_Warning\_Sign\_Layout2.dgn



NOTES:

1. CONTRACTOR SHALL PLACE ADVANCE WARNING SIGNS ACCORDING TO DISTANCE "X" ON STANDARD BC(2)-14
2. CONTRACTOR SHALL FIELD VERIFY POSTED SPEED FOR "X" SPACING
3. SIGN LOCATIONS MAY BE ADJUSTED DUE TO CONDITIONS AS APPROVED BY THE ENGINEER
4. CONFLICTING SIGNS SHALL BE COVERED BY CONTRACTOR OR AS DIRECTED BY THE ENGINEER
5. SIGNS SHOWN SHALL BE COORDINATED WITH SPECIFIC WORK TRAFFIC CONTROL DETAILS INCLUDED IN THE PLANS
6. SIGNS 5 & 6 TO BE MOVED AND PLACED ONLY IN ADVANCE OF WHERE WORK IS BEING PERFORMED
7. SIGN 8 SHALL DISPLAY APPROPRIATE SPEED LIMIT IN PLACE OF "XX"

**LEGEND**

- CONSTRUCTION WARNING SIGN
- ➔ TRAFFIC FLOW
- ▨ WORK ZONE

POSTED SPEED	LONGITUDINAL BUFFER SPACE
MPH	FT (APPROX)
30	90
35	120
40	155
45	195
50	240
55	295
60	350
65	410
70	475

DESIGN

**INTERIM REVIEW**  
 DOCUMENT INCOMPLETE. NOT INTENDED FOR PERMIT, BIDDING OR CONSTRUCTION.  
 ENGINEER: JOHN A. TYLER  
 P.E. SERIAL NO: 105193  
 DATE: 10/27/2017

REVIEW AND APPROVAL

**INTERIM REVIEW**  
 DOCUMENT INCOMPLETE. NOT INTENDED FOR PERMIT, BIDDING OR CONSTRUCTION.  
 ENGINEER: JAMES A. LUTZ  
 P.E. SERIAL NO: 84722  
 DATE: 10/27/2017

SCALE: PLAN NTS

REV. NO.	DATE	DESCRIPTION	BY



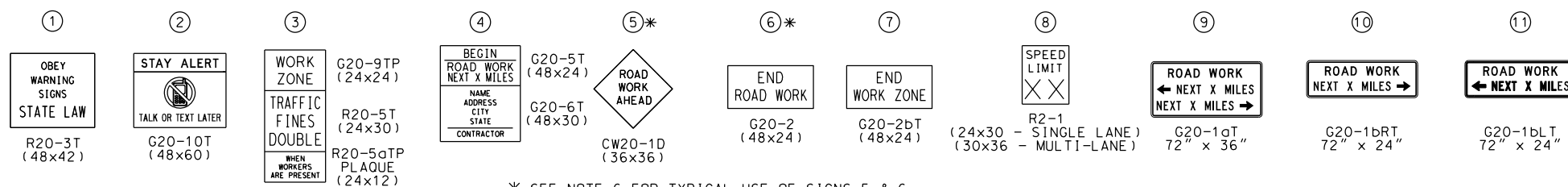
SAN ANTONIO | AUSTIN | HOUSTON | FORT WORTH | DALLAS  
 2000 NW LOOP 410 | SAN ANTONIO, TX 78213 | 210.375.9000  
 TBPE FIRM REGISTRATION #470 | TBPLS FIRM REGISTRATION #10028800



**SAN PEDRO AVE  
 TRANSIT CENTER  
 ADVANCE WARNING  
 SIGN LAYOUT**

SHEET 2 OF 2

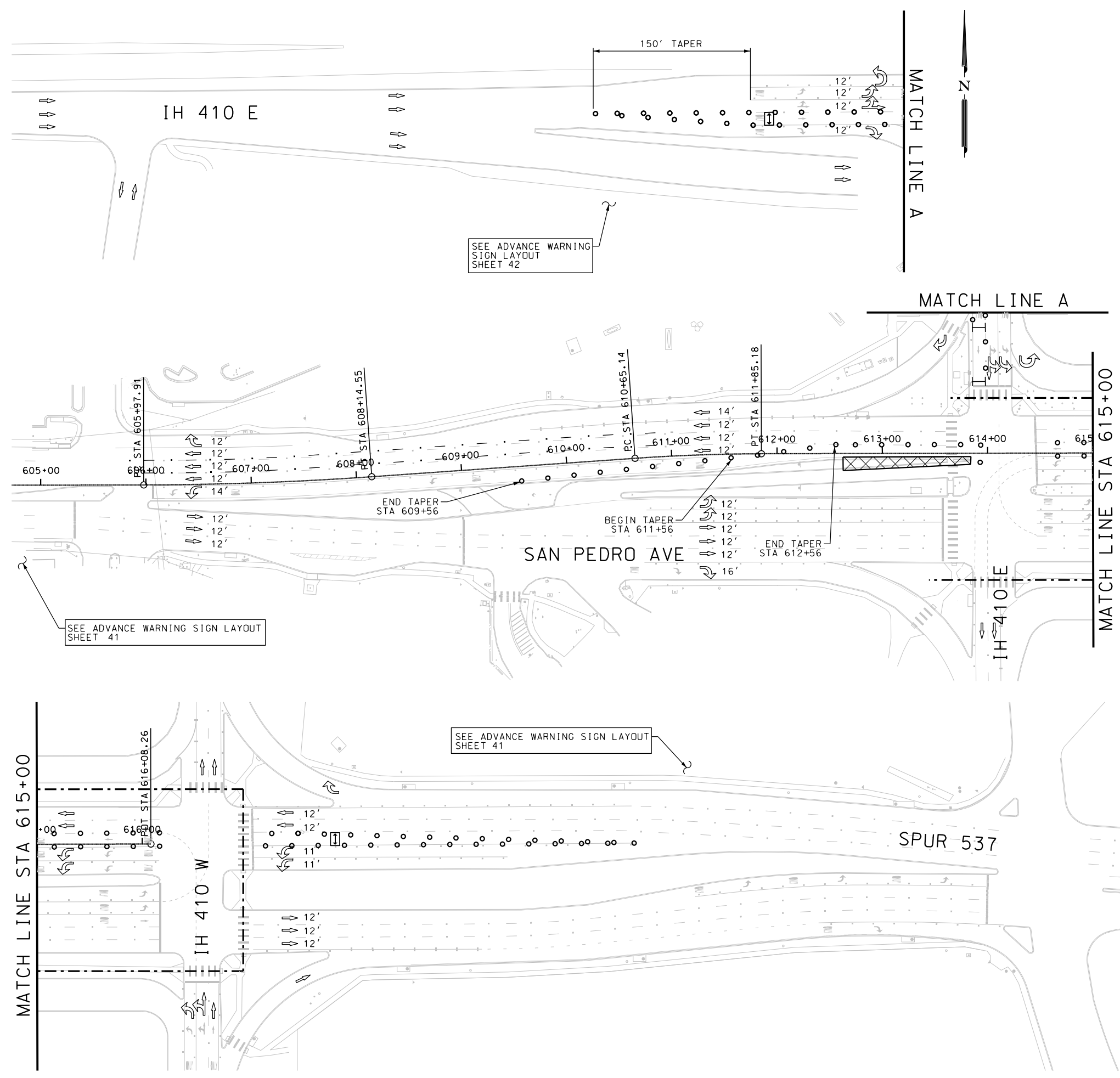
DWG	FED. RD. DIV. NO.	STATE	FEDERAL AID PROJECT NO.	HIGHWAY NO.		
CHK DWG	6	TEXAS		VA		
DWG	DIST.	COUNTY	CONT. NO.	SECT. NO.	JOB NO.	SHEET NO.
CHK DWG	SAT	BEXAR	0915	12	586	42



\* SEE NOTE 6 FOR TYPICAL USE OF SIGNS 5 & 6

Plotted on: 10/27/2017

Design File name: P:\111\35\01\design\Civil\TCP\1113501\_TCP\_San\_Pedro\_TransitCenter\_01A.dgn



**LEGEND**

- CONSTRUCTION AREA
- TEMP ASPH TRANSITION (NSPI)
- PREVIOUSLY CONSTRUCTED
- PLASTIC DRUMS
- TRAFFIC FLOW ARROWS
- TCP SIGN
- TYPE III BARRICADE
- PEDESTRIAN DETOUR
- ARROW BOARD

**NOTES:**

1. FOR ADDITIONAL DETAILS SEE TxDOT TCP STANDARD SHEETS.
2. EXISTING FEATURES ARE SHOWN SCREENED BACK.

**DESIGN**

INTERIM REVIEW

DOCUMENT INCOMPLETE. NOT INTENDED FOR PERMIT, BIDDING OR CONSTRUCTION.

ENGINEER: JOHN A. TYLER

P.E. SERIAL NO: 105193

DATE: 10/27/2017

**REVIEW AND APPROVAL**

INTERIM REVIEW

DOCUMENT INCOMPLETE. NOT INTENDED FOR PERMIT, BIDDING OR CONSTRUCTION.

ENGINEER: JAMES A. LUTZ

P.E. SERIAL NO: 84722

DATE: 10/27/2017

SCALE: PLAN 1" = 100'

REV. NO.	DATE	DESCRIPTION	BY

**Pape-Dawson ENGINEERS**

SAN ANTONIO | AUSTIN | HOUSTON | FORT WORTH | DALLAS

2000 NW LOOP 410 | SAN ANTONIO, TX 78213 | 210.375.9000

TBPE FIRM REGISTRATION #470 | TBPLS FIRM REGISTRATION #10028800

Texas Department of Transportation

© 2017

SAN PEDRO AVE  
TRANSIT CENTER

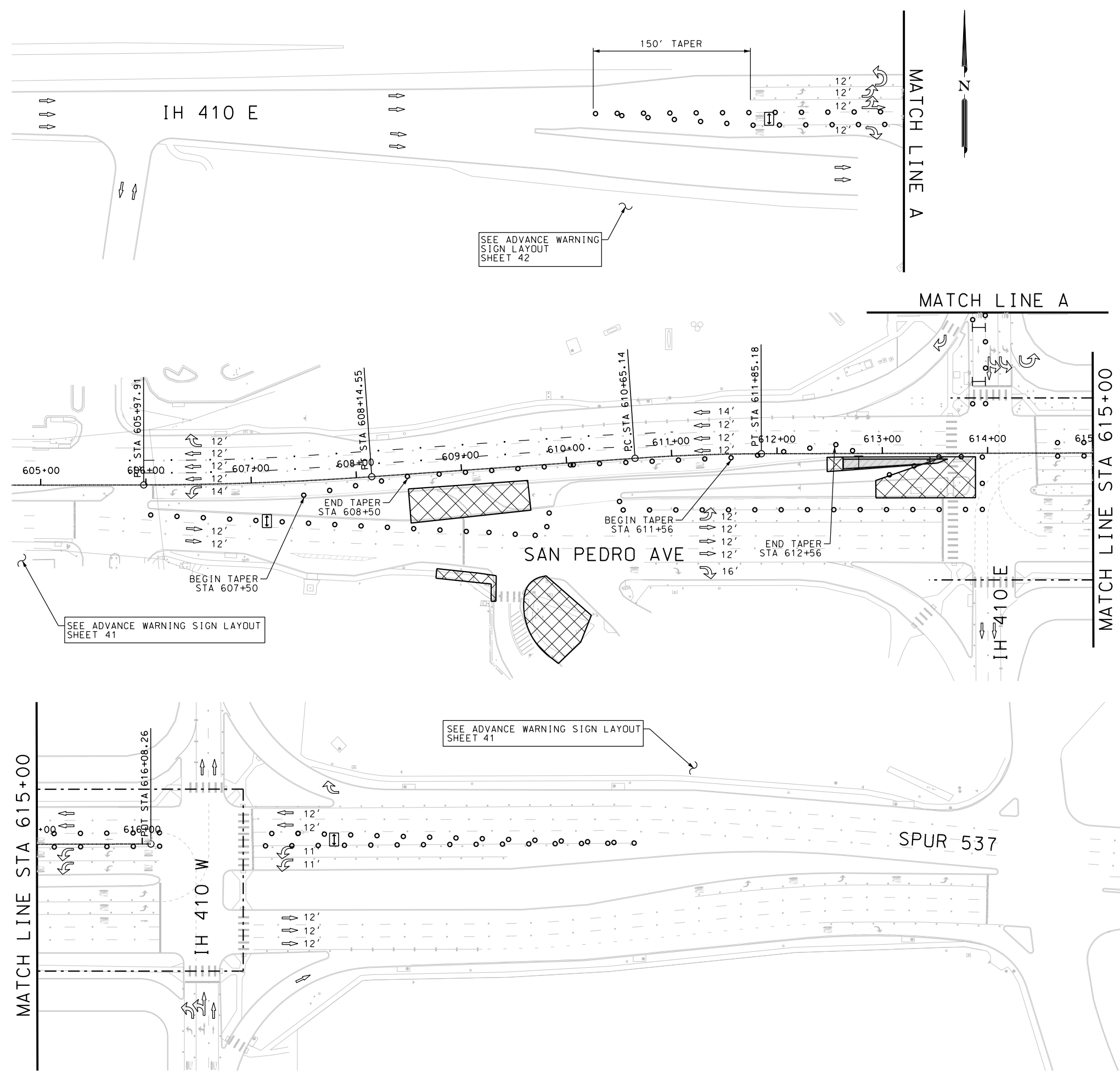
TCP LAYOUT  
PHASE 1 STEP 1A

SHEET 1 OF 5

DGN:	FED. RD. DIV. NO.:	STATE:	FEDERAL AID PROJECT NO.:	HIGHWAY NO.:
CHK DGN:	6	TEXAS		VA
DWG:	DIST.:	COUNTY:	CONT. NO.:	SECT. NO.:
CHK DWG:	SAT	BEXAR	0915	12
				JOB NO.:
				586
				SHEET NO.:
				43

Plotted on: 10/27/2017

Design File name: P:\111\35\01\design\Civil\TCP\_San\_Pedro\_TransitCenter\_01.dgn



**LEGEND**

- CONSTRUCTION AREA
- TEMP ASPH TRANSITION (NSPI)
- PREVIOUSLY CONSTRUCTED
- PLASTIC DRUMS
- TRAFFIC FLOW ARROWS
- TCP SIGN
- TYPE III BARRICADE
- PEDESTRIAN DETOUR
- ARROW BOARD

- NOTES:**
- FOR ADDITIONAL DETAILS SEE TxDOT TCP STANDARD SHEETS.
  - EXISTING FEATURES ARE SHOWN SCREENED BACK.

DESIGN  
**INTERIM REVIEW**  
 DOCUMENT INCOMPLETE. NOT INTENDED FOR PERMIT, BIDDING OR CONSTRUCTION.  
 ENGINEER: JOHN A. TYLER  
 P.E. SERIAL NO: 105193  
 DATE: 10/27/2017

REVIEW AND APPROVAL  
**INTERIM REVIEW**  
 DOCUMENT INCOMPLETE. NOT INTENDED FOR PERMIT, BIDDING OR CONSTRUCTION.  
 ENGINEER: JAMES A. LUTZ  
 P.E. SERIAL NO: 84722  
 DATE: 10/27/2017

SCALE: PLAN 1" = 100'

REV. NO.	DATE	DESCRIPTION	BY

**PAPE-DAWSON ENGINEERS**  
 SAN ANTONIO | AUSTIN | HOUSTON | FORT WORTH | DALLAS  
 2000 NW LOOP 410 | SAN ANTONIO, TX 78213 | 210.375.9000  
 TBPE FIRM REGISTRATION #470 | TBPLS FIRM REGISTRATION #10028800

Texas Department of Transportation  
 © 2017

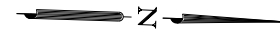
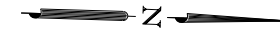
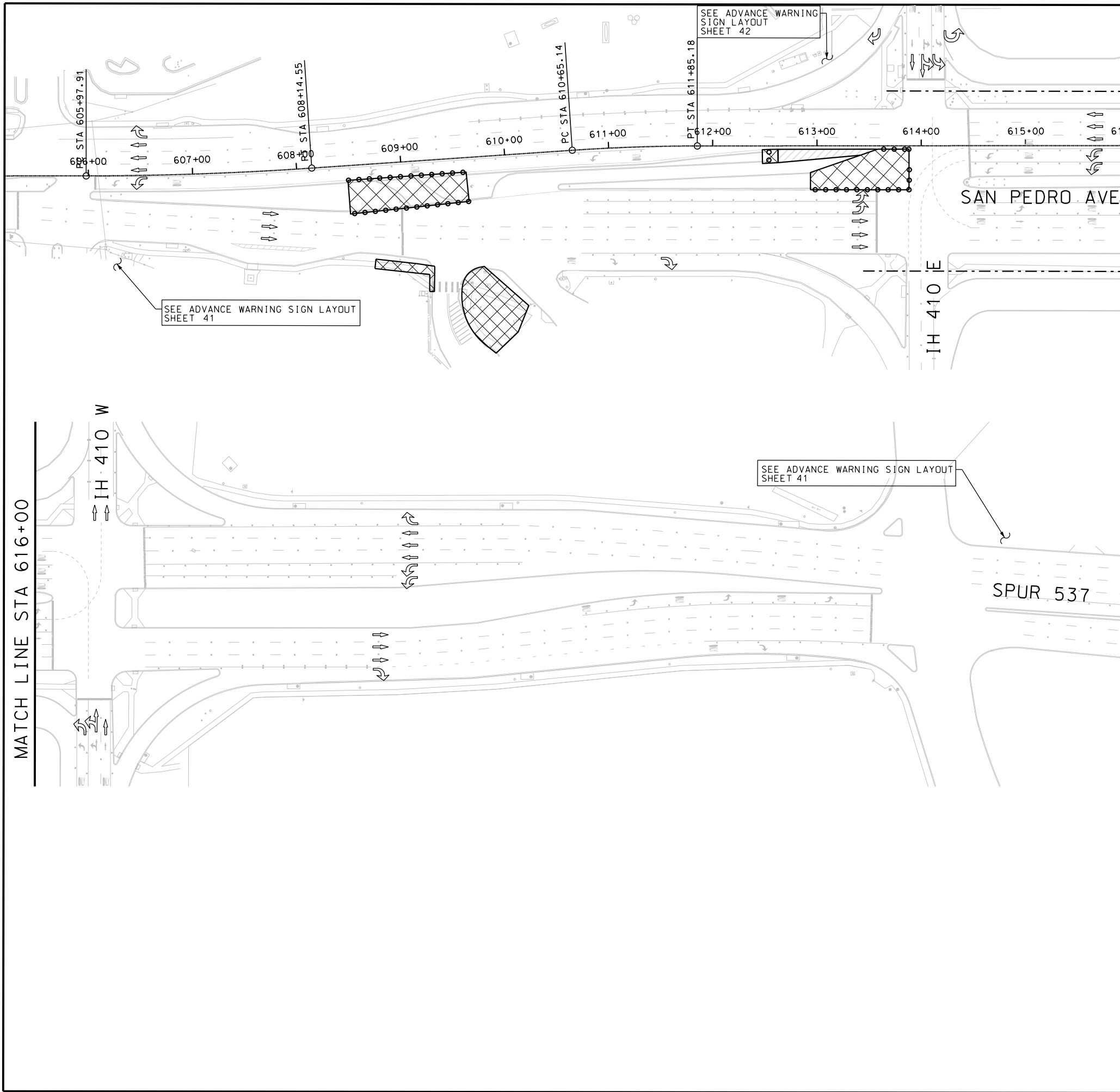
SAN PEDRO AVE  
 TRANSIT CENTER  
 TCP LAYOUT  
 PHASE 1 STEP 1

SHEET 2 OF 5

DGN:	FED. RD. DIV. NO.:	STATE:	FEDERAL AID PROJECT NO.:	HIGHWAY NO.:
CHK DGN:	6	TEXAS		VA
DWG:	DIST.:	COUNTY:	CONT. NO.:	SECT. NO.:
CHK DWG:	SAT	BEXAR	0915	12
				JOB NO.:
				586
				SHEET NO.:
				44

Plotted on: 10/27/2017

Design Filename: P:\111\35\01\design\Civil\TCP\San\_Pedro\_TransitCenter\_02.dgn



**LEGEND**

- CONSTRUCTION AREA
- TEMP ASPH TRANSITION (NSPI)
- PREVIOUSLY CONSTRUCTED
- PLASTIC DRUMS
- TRAFFIC FLOW ARROWS
- TCP SIGN
- TYPE III BARRICADE
- PEDESTRIAN DETOUR
- ARROW BOARD

**NOTES:**

1. FOR ADDITIONAL DETAILS SEE TxDOT TCP STANDARD SHEETS.
2. EXISTING FEATURES ARE SHOWN SCREENED BACK.

**DESIGN**

INTERIM REVIEW  
 DOCUMENT INCOMPLETE. NOT INTENDED FOR PERMIT, BIDDING OR CONSTRUCTION.  
 ENGINEER: JOHN A. TYLER  
 P.E. SERIAL NO: 105193  
 DATE: 10/27/2017

**REVIEW AND APPROVAL**

INTERIM REVIEW  
 DOCUMENT INCOMPLETE. NOT INTENDED FOR PERMIT, BIDDING OR CONSTRUCTION.  
 ENGINEER: JAMES A. LUTZ  
 P.E. SERIAL NO: 84722  
 DATE: 10/27/2017

SCALE: PLAN 1" = 100'

REV. NO.	DATE	DESCRIPTION	BY

**Pape-Dawson ENGINEERS**

SAN ANTONIO | AUSTIN | HOUSTON | FORT WORTH | DALLAS  
 2000 HW LOOP 410 | SAN ANTONIO, TX 78213 | 210.375.9000  
 TBPE FIRM REGISTRATION #470 | TBPLS FIRM REGISTRATION #10028800

Texas Department of Transportation  
 © 2017

SAN PEDRO AVE  
 TRANSIT CENTER

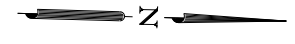
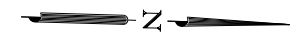
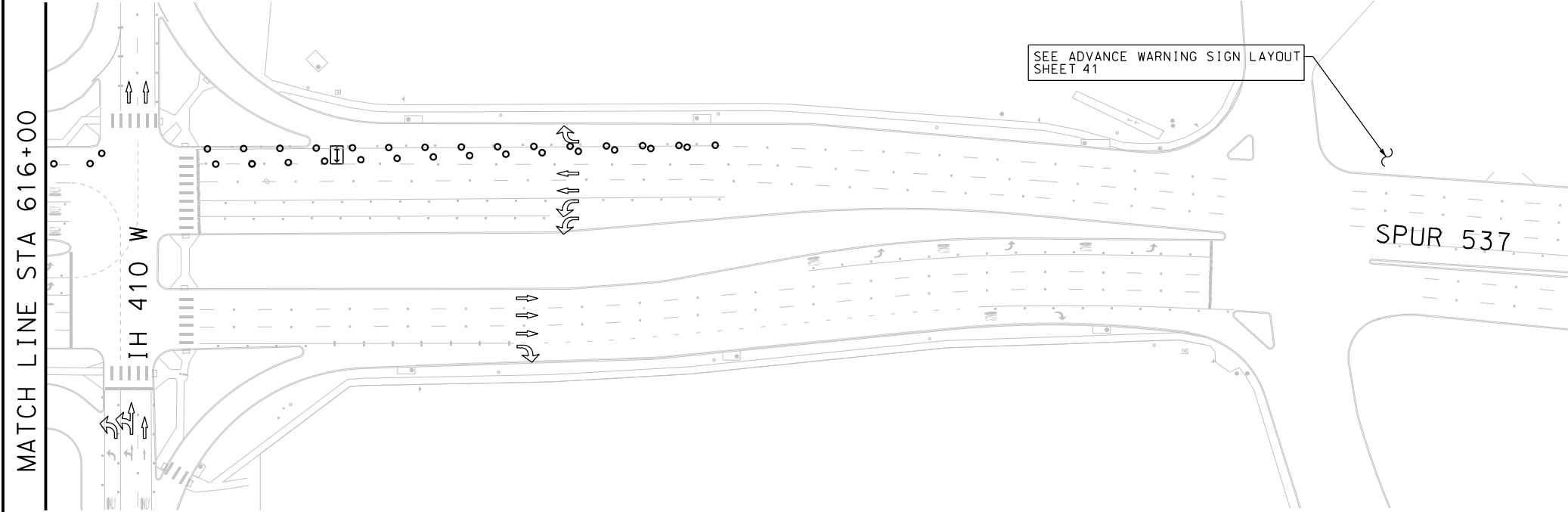
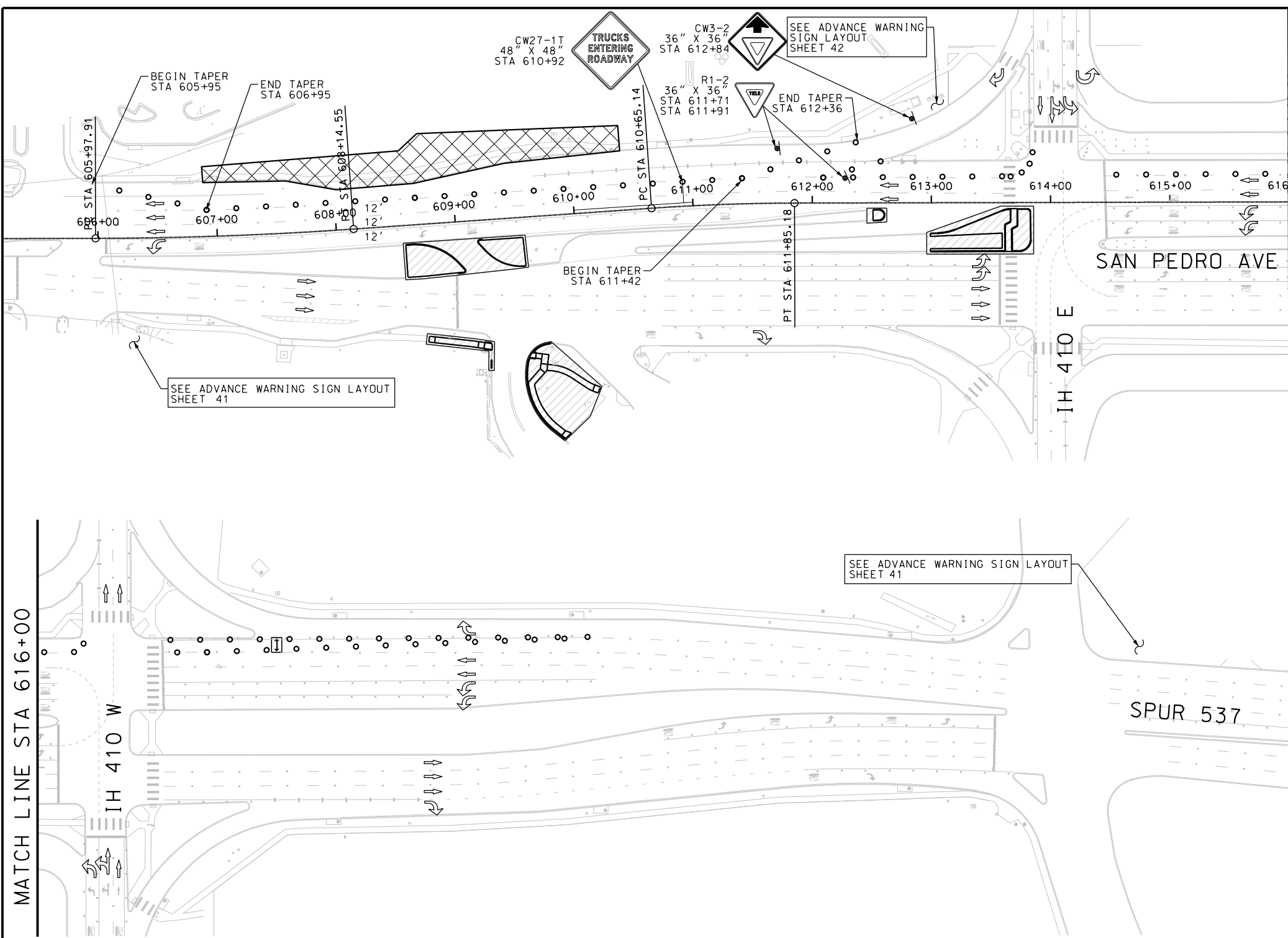
TCP LAYOUT  
 PHASE 1 STEP 2

SHEET 3 OF 5

DGN:	FED. RD. DIV. NO.	STATE	FEDERAL AID PROJECT NO.			HIGHWAY NO.
CHK DGN:	6	TEXAS				VA
DWG:	DIST.	COUNTY	CONT. NO.	SECT. NO.	JOB NO.	SHEET NO.
CHK DWG:	SAT	BEXAR	0915	12	586	45

Plotted on: 10/27/2017

Design File name: P:\111\35\01\design\Civil\TCP\San\_Pedro\_Transi+Center\_03.dgn



- LEGEND**
- CONSTRUCTION AREA
  - TEMP ASPH TRANSITION (NSPI)
  - PREVIOUSLY CONSTRUCTED
  - PLASTIC DRUMS
  - TRAFFIC FLOW ARROWS
  - TCP SIGN
  - TYPE III BARRICADE
  - PEDESTRIAN DETOUR
  - ARROW BOARD

**NOTES:**

1. FOR ADDITIONAL DETAILS SEE TxDOT TCP STANDARD SHEETS.
2. EXISTING FEATURES ARE SHOWN SCREENED BACK.

DESIGN  
**INTERIM REVIEW**  
 DOCUMENT INCOMPLETE. NOT INTENDED FOR PERMIT, BIDDING OR CONSTRUCTION.  
 ENGINEER: JOHN A. TYLER  
 P.E. SERIAL NO: 105193  
 DATE: 10/27/2017

REVIEW AND APPROVAL  
**INTERIM REVIEW**  
 DOCUMENT INCOMPLETE. NOT INTENDED FOR PERMIT, BIDDING OR CONSTRUCTION.  
 ENGINEER: JAMES A. LUTZ  
 P.E. SERIAL NO: 84722  
 DATE: 10/27/2017

SCALE: PLAN 1" = 100'

REV. NO.	DATE	DESCRIPTION	BY

**Pape-Dawson ENGINEERS**  
 SAN ANTONIO | AUSTIN | HOUSTON | FORT WORTH | DALLAS  
 2000 NW LOOP 410 | SAN ANTONIO, TX 78213 | 210.375.9000  
 TBPE FIRM REGISTRATION #470 | TBPLS FIRM REGISTRATION #10028800



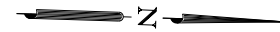
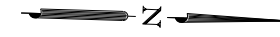
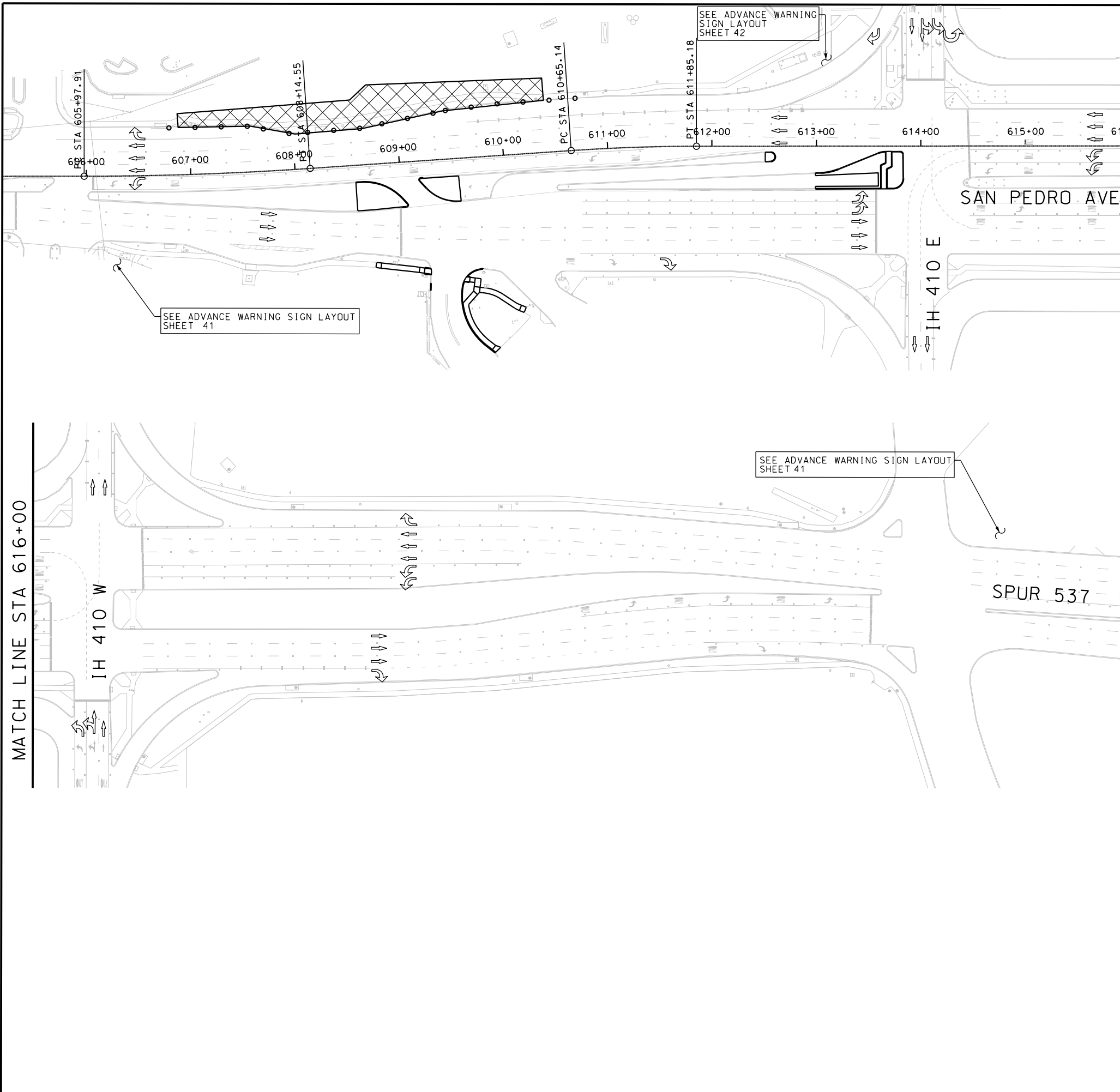
SAN PEDRO AVE  
 TRANSIT CENTER  
 TCP LAYOUT  
 PHASE 2 STEP 1

SHEET 4 OF 5

DGN:	FED. RD. DIV. NO.:	STATE:	FEDERAL AID PROJECT NO.:	HIGHWAY NO.:
CHK DGN:	6	TEXAS		VA
DWG:	DIST.:	COUNTY:	CONT. NO.:	SECT. NO.:
CHK DWG:	SAT	BEXAR	0915	12
				JOB NO.:
				586
				SHEET NO.:
				46

Plotted on: 10/27/2017

Design Filename: P:\111\35\01\design\Civil\TCP\San\_Pedro\_TransitCenter\_04.dgn



**LEGEND**

- CONSTRUCTION AREA
- TEMP ASPH TRANSITION (NSPI)
- PREVIOUSLY CONSTRUCTED
- PLASTIC DRUMS
- TRAFFIC FLOW ARROWS
- TCP SIGN
- TYPE III BARRICADE
- PEDESTRIAN DETOUR
- ARROW BOARD

**NOTES:**

1. FOR ADDITIONAL DETAILS SEE TxDOT TCP STANDARD SHEETS.
2. EXISTING FEATURES ARE SHOWN SCREENED BACK.

**DESIGN**

INTERIM REVIEW  
 DOCUMENT INCOMPLETE. NOT INTENDED FOR PERMIT, BIDDING OR CONSTRUCTION.  
 ENGINEER: JOHN A. TYLER  
 P.E. SERIAL NO: 105193  
 DATE: 10/27/2017

**REVIEW AND APPROVAL**

INTERIM REVIEW  
 DOCUMENT INCOMPLETE. NOT INTENDED FOR PERMIT, BIDDING OR CONSTRUCTION.  
 ENGINEER: JAMES A. LUTZ  
 P.E. SERIAL NO: 84722  
 DATE: 10/27/2017

SCALE: PLAN 1" = 100'

REV. NO.	DATE	DESCRIPTION	BY



SAN ANTONIO | AUSTIN | HOUSTON | FORT WORTH | DALLAS  
 2000 HW LOOP 410 | SAN ANTONIO, TX 78213 | 210.375.9000  
 TBPE FIRM REGISTRATION #470 | TBPLS FIRM REGISTRATION #10028800



SAN PEDRO AVE  
 TRANSIT CENTER

TCP LAYOUT  
 PHASE 2 STEP 2

SHEET 5 OF 5

DGN:	FED. RD. DIV. NO.	STATE	FEDERAL AID PROJECT NO.			HIGHWAY NO.
CHK DGN:	6	TEXAS				VA
DWG:	DIST.	COUNTY	CONT. NO.	SECT. NO.	JOB NO.	SHEET NO.
CHK DWG:	SAT	BEXAR	0915	12	586	47