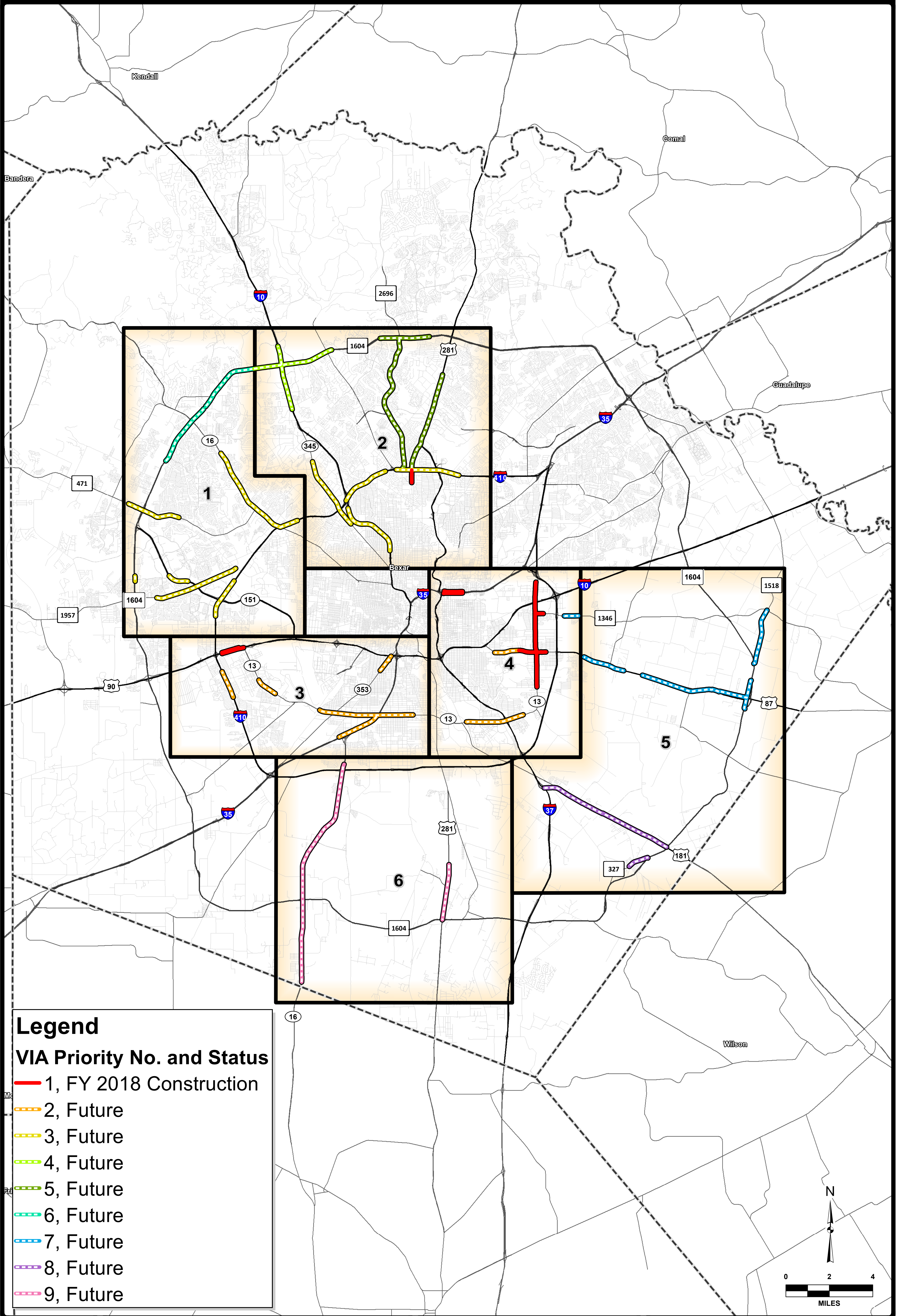


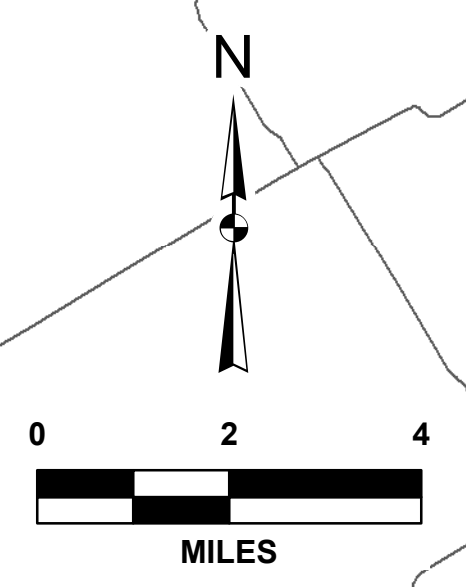
THIS DOCUMENT HAS BEEN PRODUCED FROM MATERIAL THAT HAS BEEN STORED AND OR TRANSMITTED ELECTRONICALLY AND MAY HAVE BEEN INCOMPLETELY ALTERED. NEITHER THIS DOCUMENT NOR THE ORIGINAL MATERIALS BEARING THE CONSULTANT'S ORIGINAL SIGNATURE AND SEAL, AERIAL, WATERPROOFED BY GOOGLE EARTH, OR OTHERWISE NOTED, IMPROVE TO 2018. © 2018. All Rights Reserved. USA Firm Service Agency.



Legend

VIA Priority No. and Status

- 1, FY 2018 Construction
- 2, Future
- 3, Future
- 4, Future
- 5, Future
- 6, Future
- 7, Future
- 8, Future
- 9, Future



PLAT NO.	---
JOB NO.	11135-01
DATE	Mar 2018
DESIGNER	JT
CHECKED	JT LR
SHEET	-

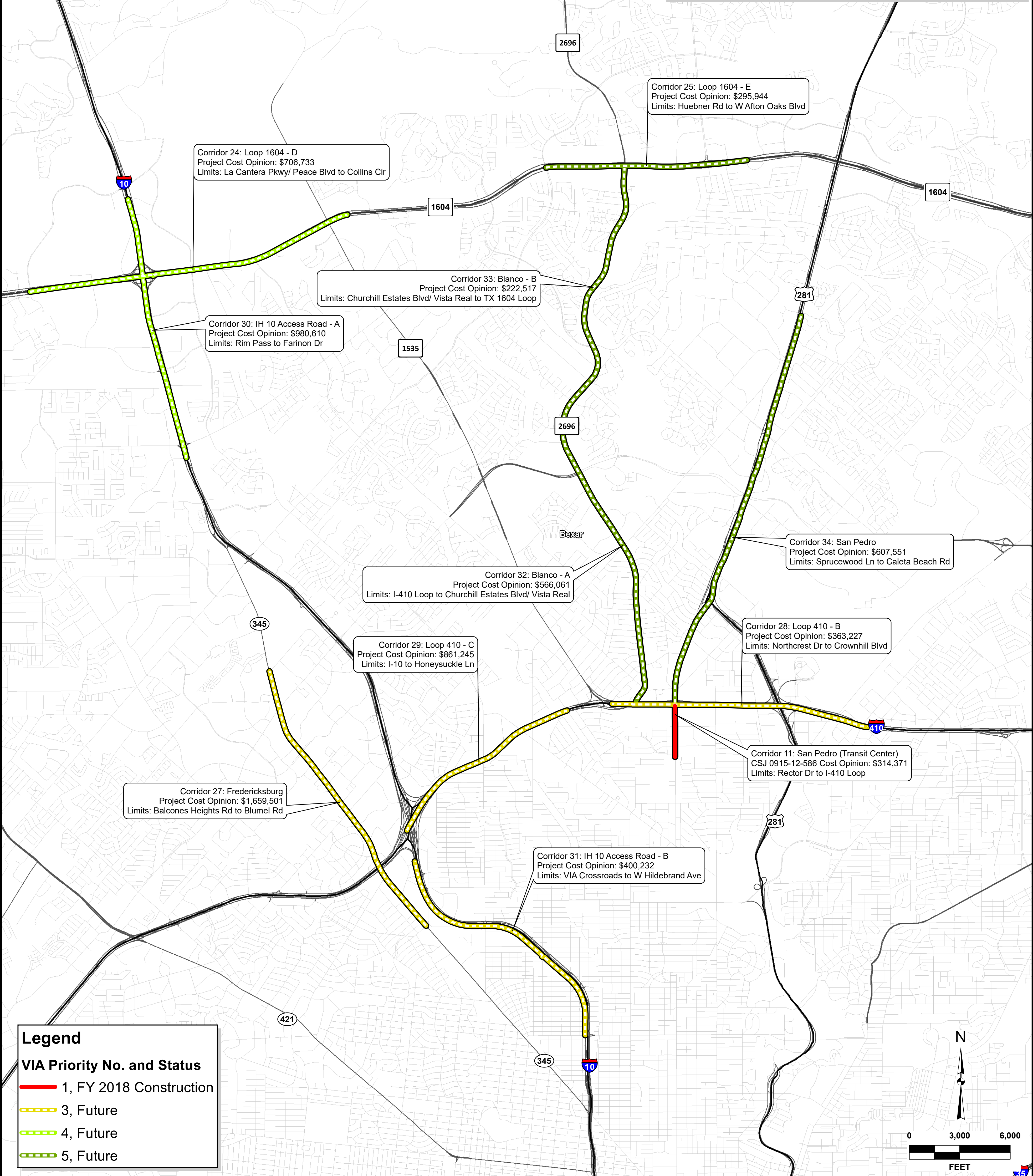
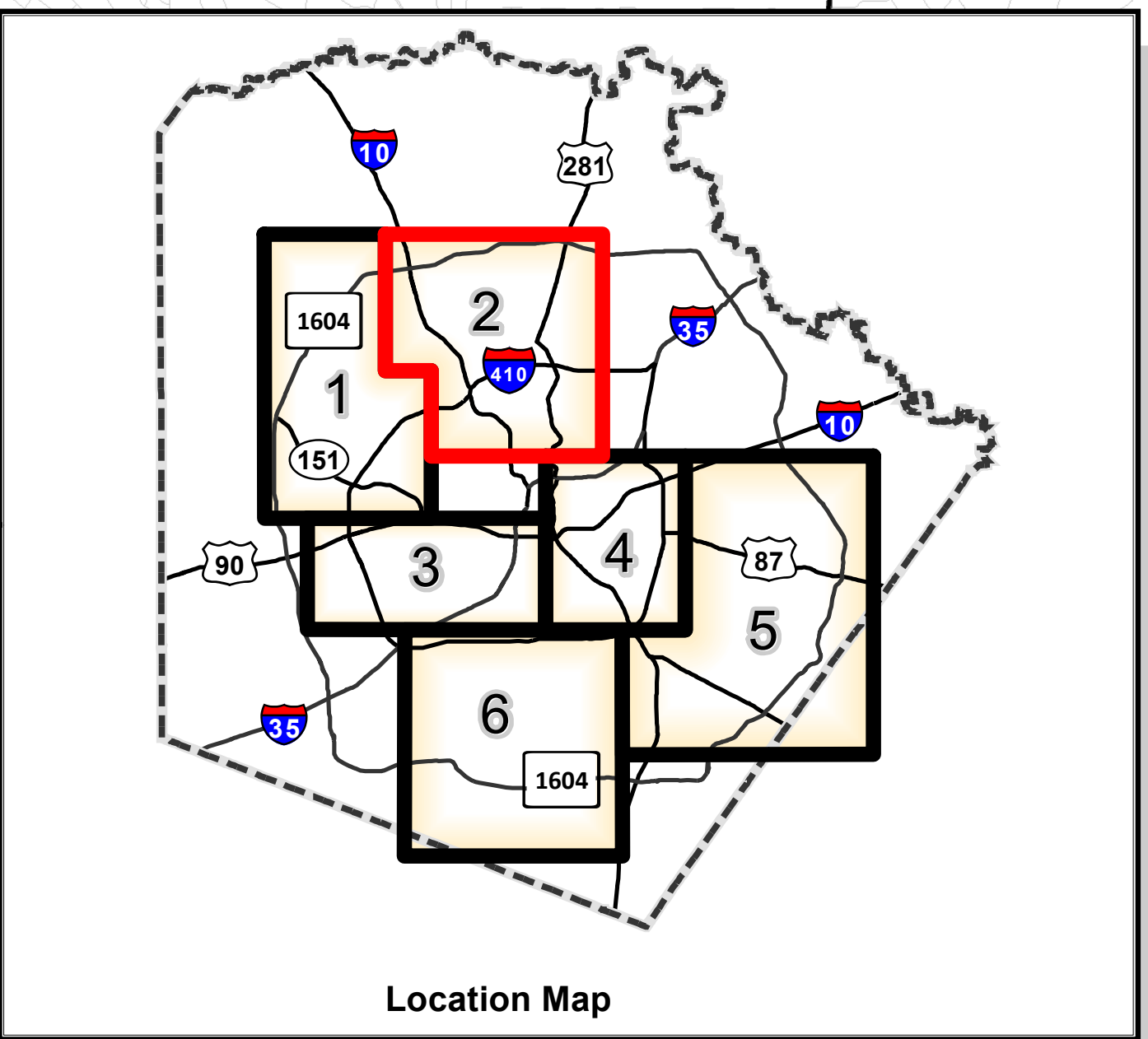
MYLINK CORRIDORS

CSJ: 0017-10-280
OVERALL PRIORITY MAP

PAPE-DAWSON ENGINEERS

SAN ANTONIO | AUSTIN | HOUSTON | FORT WORTH | DALLAS
 2000 NW LOOP 410 | SAN ANTONIO, TX 78213 | 210.375.9000
 TBPE FIRM REGISTRATION #470 | TBPLS FIRM REGISTRATION #10028800

THIS DOCUMENT HAS BEEN PRODUCED FROM MATERIAL THAT HAS BEEN STORED AND OR TRANSMITTED ELECTRONICALLY AND MAY BE REPRODUCED OR TRANSMITTED IN ANY FORM OR BY ANY MEANS, WITHOUT PERMISSION IN WRITING FROM THE CONSULTANT'S ORIGINAL SIGNATURE AND SEAL. AERIAL IMAGES PROVIDED BY GOOGLE EARTH UNLESS OTHERWISE NOTED. MAPS © 2016 CMAPCO Digital Data Texas. OnlineMap.com. USA from Service Agency.



Corridor 24: Loop 1604 - D
 Project Cost Opinion: \$706,733
 Limits: La Cantera Pkwy/ Peace Blvd to Collins Cir

Corridor 25: Loop 1604 - E
 Project Cost Opinion: \$295,944
 Limits: Huebner Rd to W Afton Oaks Blvd

Corridor 33: Blanco - B
 Project Cost Opinion: \$222,517
 Limits: Churchill Estates Blvd/ Vista Real to TX 1604 Loop

Corridor 30: IH 10 Access Road - A
 Project Cost Opinion: \$980,610
 Limits: Rim Pass to Farinon Dr

Corridor 32: Blanco - A
 Project Cost Opinion: \$566,061
 Limits: I-410 Loop to Churchill Estates Blvd/ Vista Real

Corridor 34: San Pedro
 Project Cost Opinion: \$607,551
 Limits: Sprucewood Ln to Caleta Beach Rd

Corridor 29: Loop 410 - C
 Project Cost Opinion: \$861,245
 Limits: I-10 to Honeysuckle Ln

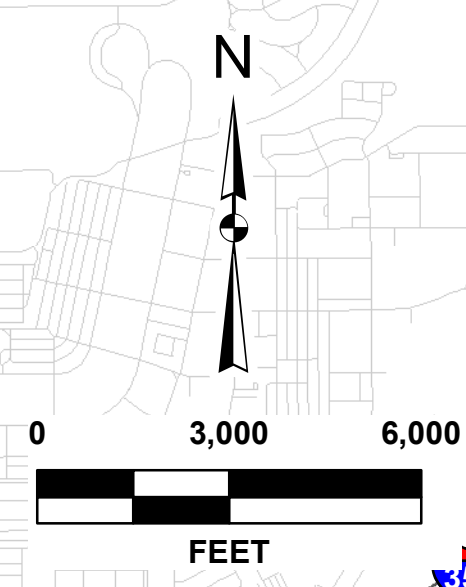
Corridor 28: Loop 410 - B
 Project Cost Opinion: \$363,227
 Limits: Northcrest Dr to Crownhill Blvd

Corridor 27: Fredericksburg
 Project Cost Opinion: \$1,659,501
 Limits: Balcones Heights Rd to Blumel Rd

Corridor 11: San Pedro (Transit Center)
 CSJ 0915-12-586 Cost Opinion: \$314,371
 Limits: Rector Dr to I-410 Loop

Corridor 31: IH 10 Access Road - B
 Project Cost Opinion: \$400,232
 Limits: VIA Crossroads to W Hildebrand Ave

Legend	
VIA Priority No. and Status	
—	1, FY 2018 Construction
---	3, Future
---	4, Future
...	5, Future

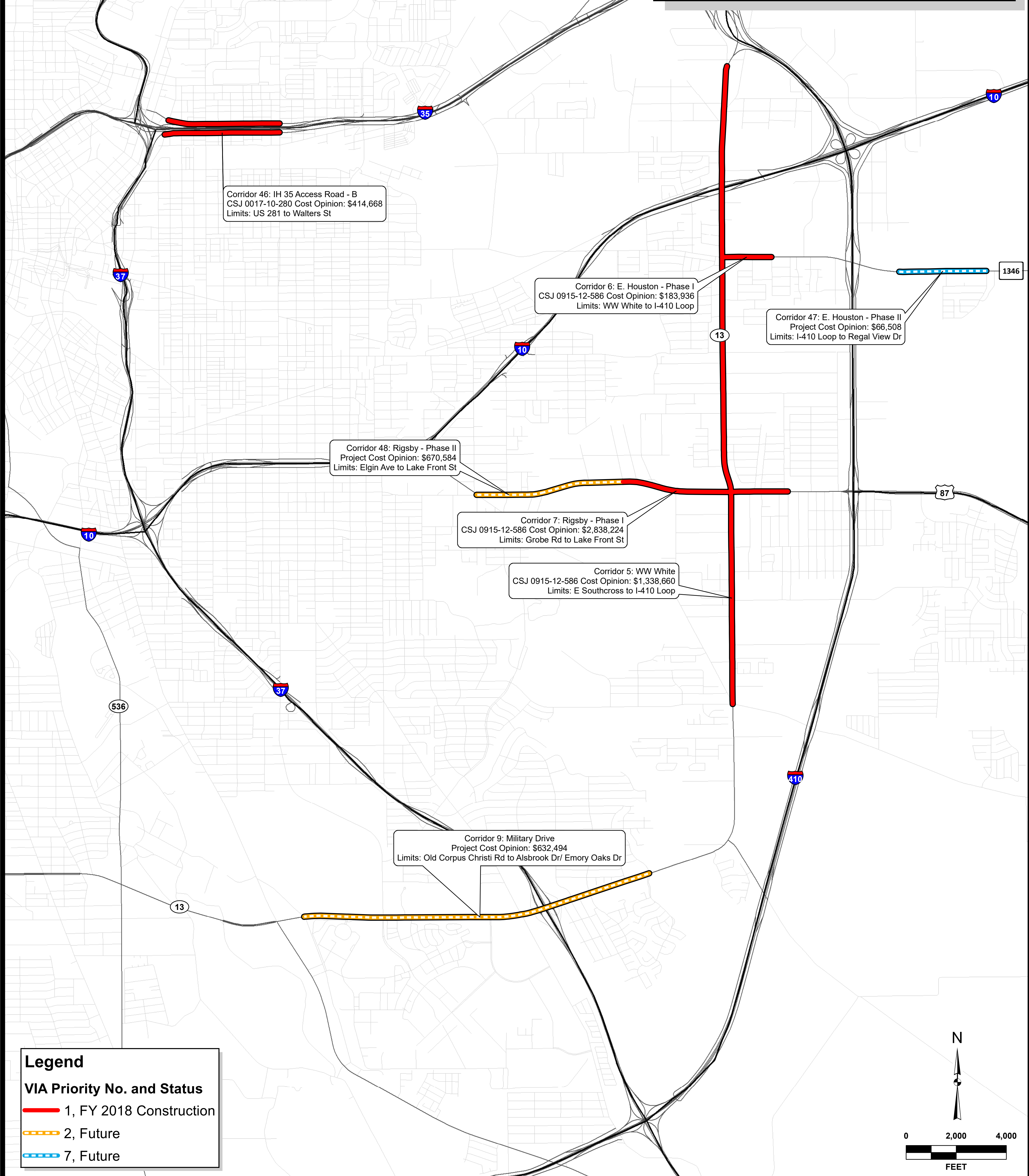
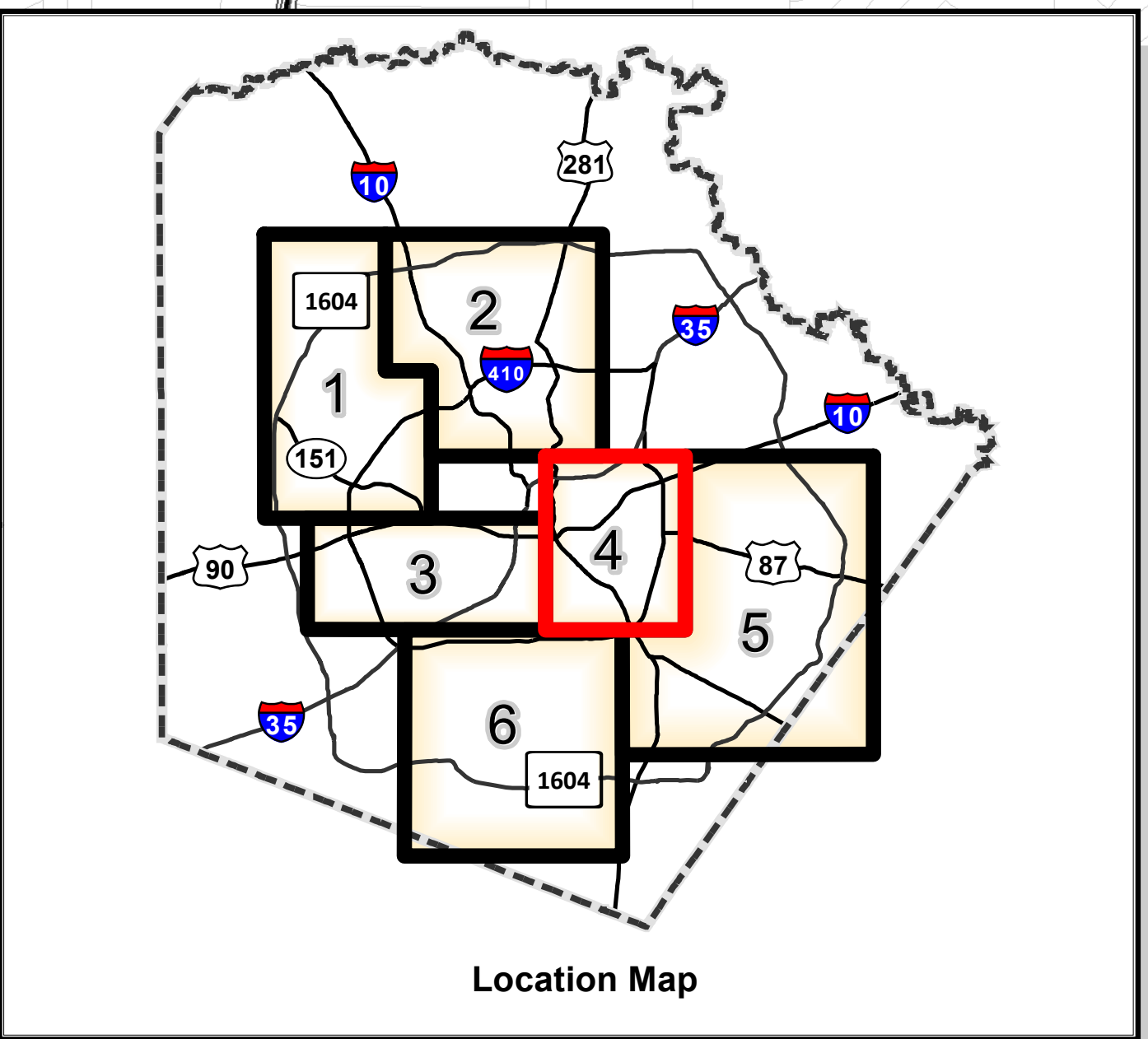


PLAT NO.	---
JOB NO.	11135-01
DATE	Mar 2018
DESIGNER	JT
CHECKED	JT DRAWN LR
SHEET	2.0

MYLINK CORRIDORS
SHEET 2
 CSJ: 0017-10-280
PRIORITY MAP

SAN ANTONIO | AUSTIN | HOUSTON | FORT WORTH | DALLAS
 2000 NW LOOP 410 | SAN ANTONIO, TX 78213 | 210.375.9000
 TBPE FIRM REGISTRATION #470 | TBPLS FIRM REGISTRATION #10028800

THIS DOCUMENT HAS BEEN PROVIDED FROM MATERIAL THAT HAS BEEN STORED AND OR TRANSMITTED ELECTRONICALLY AND MAY BE REPRODUCED OR TRANSMITTED IN ANY FORM OR BY ANY MEANS, WITHOUT PERMISSION IN WRITING FROM THE CONSULTANT'S ORIGINAL SIGNATURE AND SEAL. AERIAL IMAGES PROVIDED BY GOOGLE EARTH UNLESS OTHERWISE NOTED. Imagery © 2018 CMAP/COR Digital Data Texas OpenMappy Program. USDA Farm Service Agency.



Corridor 46: IH 35 Access Road - B
 CSJ 0017-10-280 Cost Opinion: \$414,668
 Limits: US 281 to Walters St

Corridor 6: E. Houston - Phase I
 CSJ 0915-12-586 Cost Opinion: \$183,936
 Limits: WW White to I-410 Loop

Corridor 47: E. Houston - Phase II
 Project Cost Opinion: \$66,508
 Limits: I-410 Loop to Regal View Dr

Corridor 48: Rigsby - Phase II
 Project Cost Opinion: \$670,584
 Limits: Elgin Ave to Lake Front St

Corridor 7: Rigsby - Phase I
 CSJ 0915-12-586 Cost Opinion: \$2,838,224
 Limits: Grobe Rd to Lake Front St

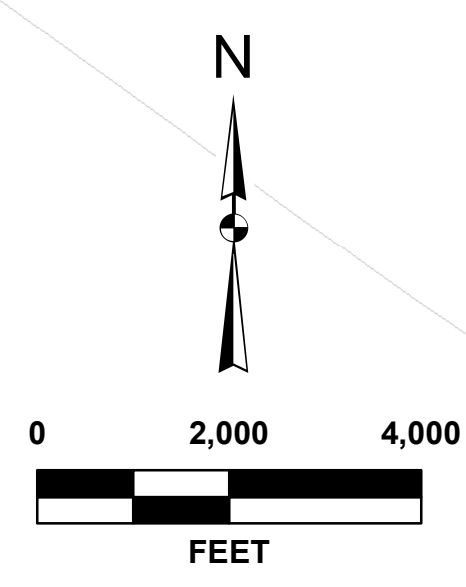
Corridor 5: WW White
 CSJ 0915-12-586 Cost Opinion: \$1,338,660
 Limits: E Southcross to I-410 Loop

Corridor 9: Military Drive
 Project Cost Opinion: \$632,494
 Limits: Old Corpus Christi Rd to Alsbrook Dr/ Emory Oaks Dr

Legend

VIA Priority No. and Status

- 1, FY 2018 Construction
- - - 2, Future
- - - 7, Future



PLAT NO.	--
JOB NO.	11135-01
DATE	Mar 2018
DESIGNER	JT
CHECKED	JT DRAWN LR
SHEET	4.0

**MYLINK CORRIDORS
 SHEET 4**
 CSJ: 0017-10-280
 PRIORITY MAP

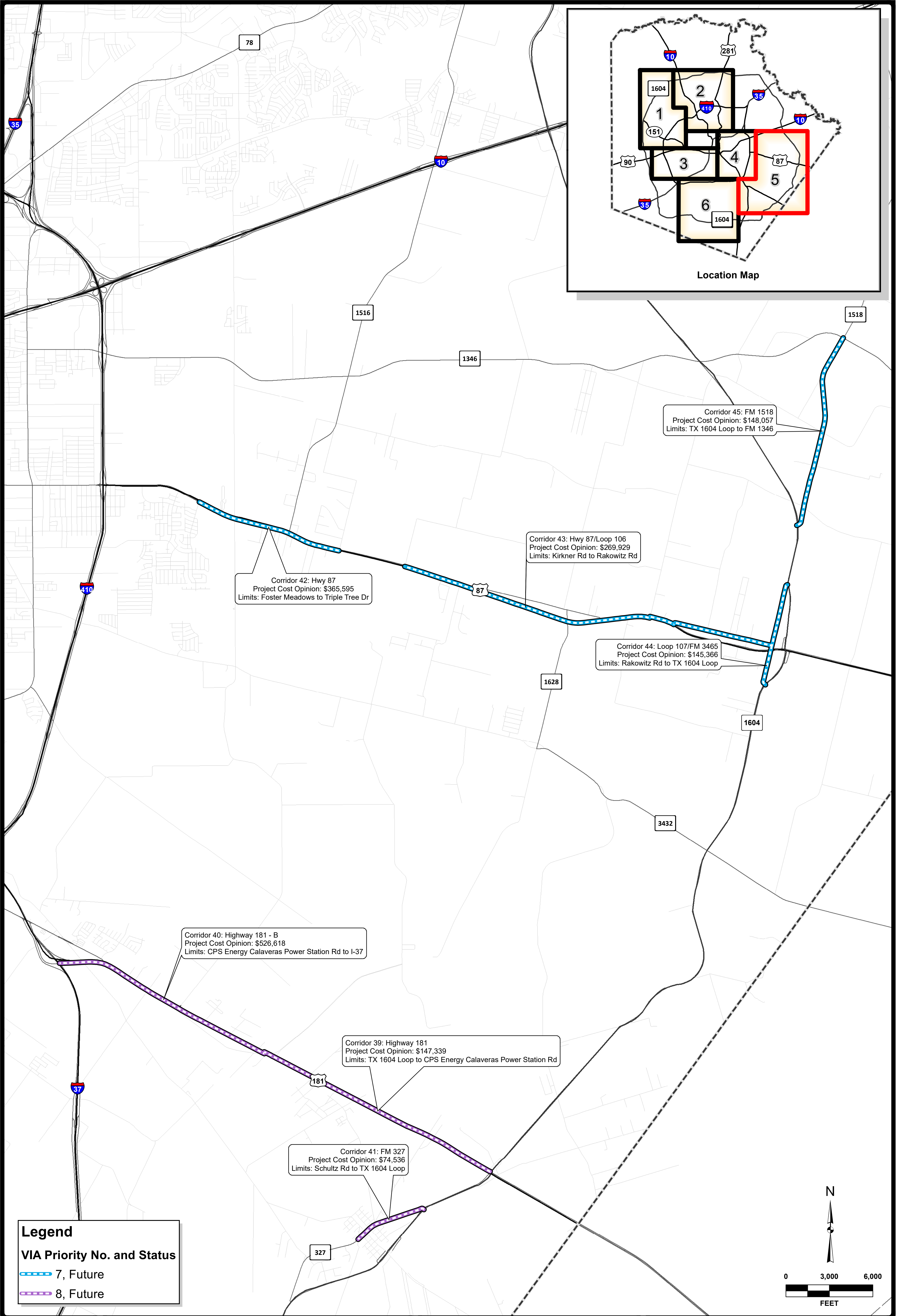
**Pape-Dawson
 ENGINEERS**

SAN ANTONIO | AUSTIN | HOUSTON | FORT WORTH | DALLAS
 2000 NW LOOP 410 | SAN ANTONIO, TX 78213 | 210.375.9000
 TBPE FIRM REGISTRATION #470 | TBPLS FIRM REGISTRATION #10028800

VIA

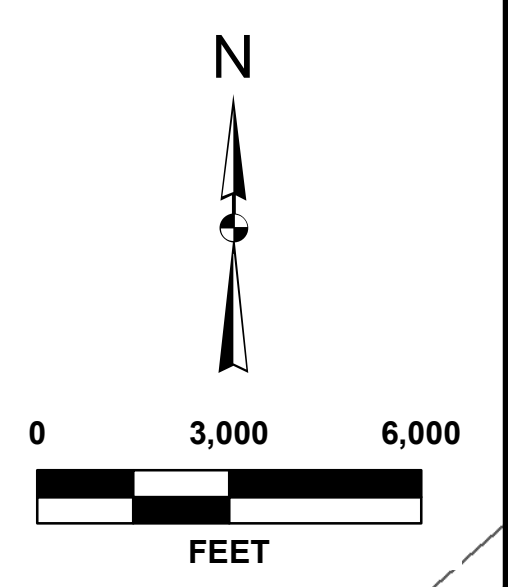
Texas
 Department
 of Transportation

THIS DOCUMENT HAS BEEN PRODUCED FROM MATERIAL THAT HAS BEEN STORED AND OR TRANSMITTED ELECTRONICALLY AND MAY BE REPRODUCED OR TRANSMITTED IN ANY FORM OR BY ANY MEANS, WITHOUT PERMISSION IN WRITING FROM THE CONSULTANT'S ORIGINAL SIGNATURE AND SEAL. AERIAL IMAGES PROVIDED BY GOOGLE EARTH. UNLESS OTHERWISE NOTED, IMAGES © 2016. © 2016 Digital Globe, Inc. All Rights Reserved. USA Firm Service Agency.



Legend
VIA Priority No. and Status

- ▬▬▬▬ 7, Future
- ▬▬▬▬ 8, Future



PLAT NO.	--
JOB NO.	11135-01
DATE	Mar 2018
DESIGNER	JT
CHECKED	JT DRAWN LR
SHEET	5.0

**MYLINK CORRIDORS
 SHEET 5
 CSJ: 0017-10-280
 PRIORITY MAP**

**PAPE-DAWSON
 ENGINEERS**

SAN ANTONIO | AUSTIN | HOUSTON | FORT WORTH | DALLAS
 2000 NW LOOP 410 | SAN ANTONIO, TX 78213 | 210.375.9000
 TBPE FIRM REGISTRATION #470 | TBPLS FIRM REGISTRATION #10028800

