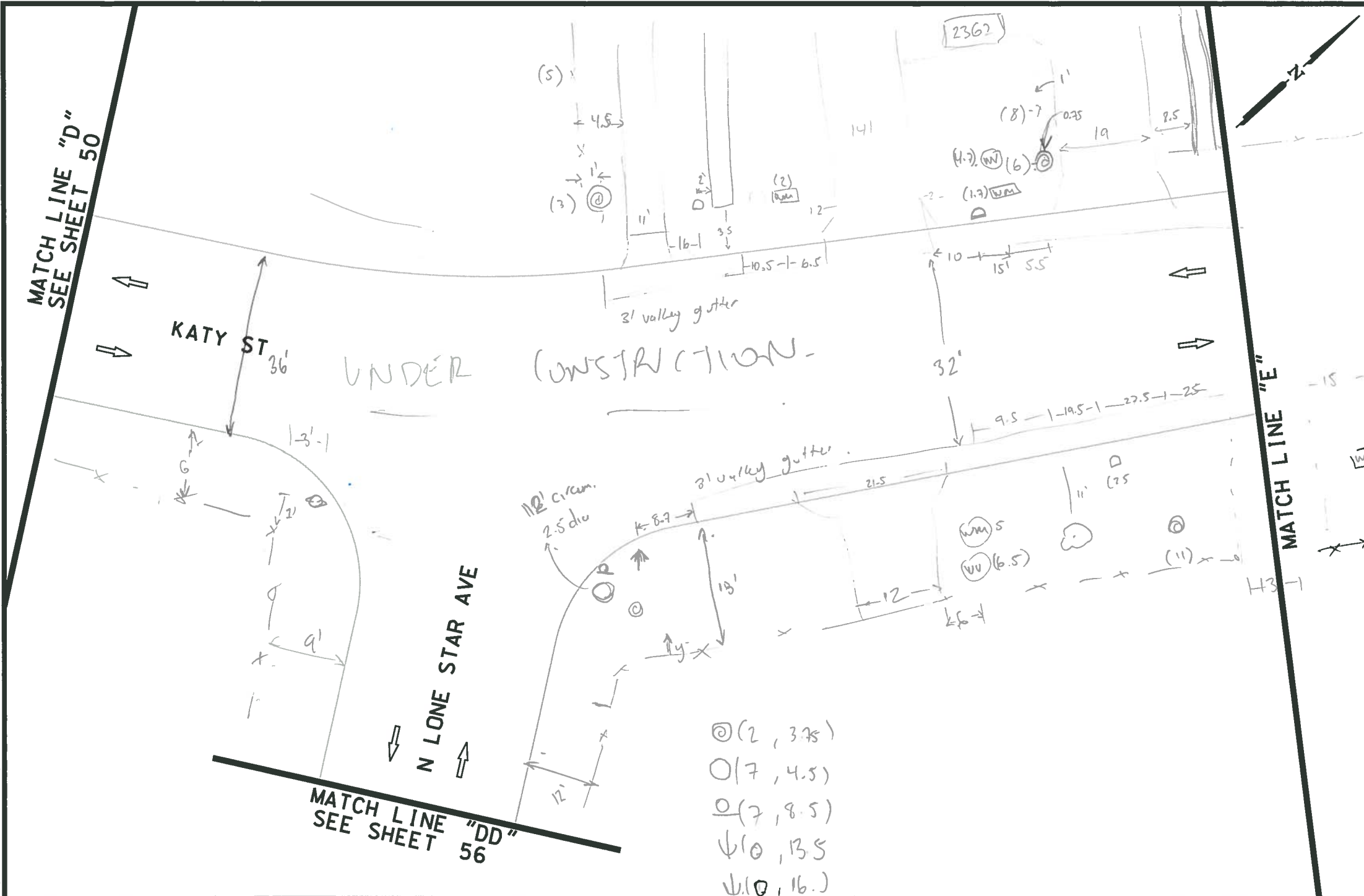


PLOTTED ON: 10/28/2016

DESIGN FILENAME: P:\1113800\Design\Civil\Roadway\1113800-NB_KatySt_SheetE.dgn



ITEM	DESCRIPTION	UNIT	QTY
------	-------------	------	-----



NB_16-025_WS_15

Am
11/2/14
DC.

NOTES:

- FOR CONTRACTOR INFORMATION ONLY
- THE EXISTENCE AND LOCATION OF ALL UTILITIES AND DRAINAGE STRUCTURES INDICATED IN THE PLANS ARE TAKEN FROM THE BEST RECORDS AVAILABLE AND ARE NOT GUARANTEED TO BE ACCURATE. CONTRACTOR SHALL COORDINATE WITH ALL UTILITY COMPANIES TO FIELD VERIFY UTILITIES PRIOR TO BEGINNING CONSTRUCTION.

DESIGN
INTERIM REVIEW
DOCUMENT INCOMPLETE. NOT INTENDED FOR PERMIT, BIDDING OR CONSTRUCTION.
ENGINEER: JOHN A. TYLER
P.E. SERIAL NO: 105193
DATE: 10/28/2016

REVIEW AND APPROVAL
INTERIM REVIEW
DOCUMENT INCOMPLETE. NOT INTENDED FOR PERMIT, BIDDING OR CONSTRUCTION.
ENGINEER: JAMES A. LUTZ
P.E. SERIAL NO: 84722
DATE: 10/28/2016

NOT TO SCALE

REV. NO.	DATE	DESCRIPTION	BY

PAPE-DAWSON ENGINEERS
SAN ANTONIO | AUSTIN | HOUSTON | FORT WORTH | DALLAS
2000 NW LOOP 410 | SAN ANTONIO, TX 78213 | 210.375.9000
TDPF FIRM REGISTRATION #470 | TDPLE FIRM REGISTRATION #10028800

Texas Department of Transportation
© 2016

CURB RAMP PROGRAM

KATY ST
SIDEWALK SHEET E

SHEET 5 OF 5

CDM#	FED. NO.	STATE	CITY	HIGHWAY NO.		
CDM#	6	TEXAS	NEW BRAUNFELS	VA		
CDM#	DIST.	COUNTY	CONT. NO.	SECT. NO.	JOB NO.	SHEET NO.
CDM#	SAT	COMAL				51

SPECIAL NOTES & DETAILS

MATCH LINE "E"
SEE SHEET 56

MATCH LINE "EE"
SEE SHEET 66

FOR ENVIRONMENTAL REVIEW ONLY

LEGEND

CAMERA POSITION	LIGHT POLE	SL LONGITUDINAL SLOPES MAY NOT EXCEED 5%. CROSS SLOPES MAY NOT EXCEED 2%
DRAINAGE FLOW ARROW	LUMINAIRE STANDARD	TRAFFIC FLOW
F FLARE	MAIL BOX	TRAFFIC SIGNAL BOX
FIRE HYDRANT	MANHOLE	TRAFFIC SIGNAL CONTROLLER
GAS METER	NSPI NO SEPARATE PAY ITEM	TRAFFIC SIGNAL POLE
GAS VALVE	PEDESTAL SIGNAL POLE	TRANSFORMER
GROUND BOX	PI POINT	TREE/BUSHES
GUY ANCHOR	POWER/UTILITY POLE	UTILITY PEDESTAL/MARKER
IRRIGATION	R RAMP	UTILITY VAULT
JUNCTION BOX	RR RIPRAP (CONC)	WATER METER
L LANDING	SIGN	WATER VALVE
L1 LANDING (COMMON)	SODDING	
LS LEVEL SIDEWALK (2% MAX)	T TRANSITION	