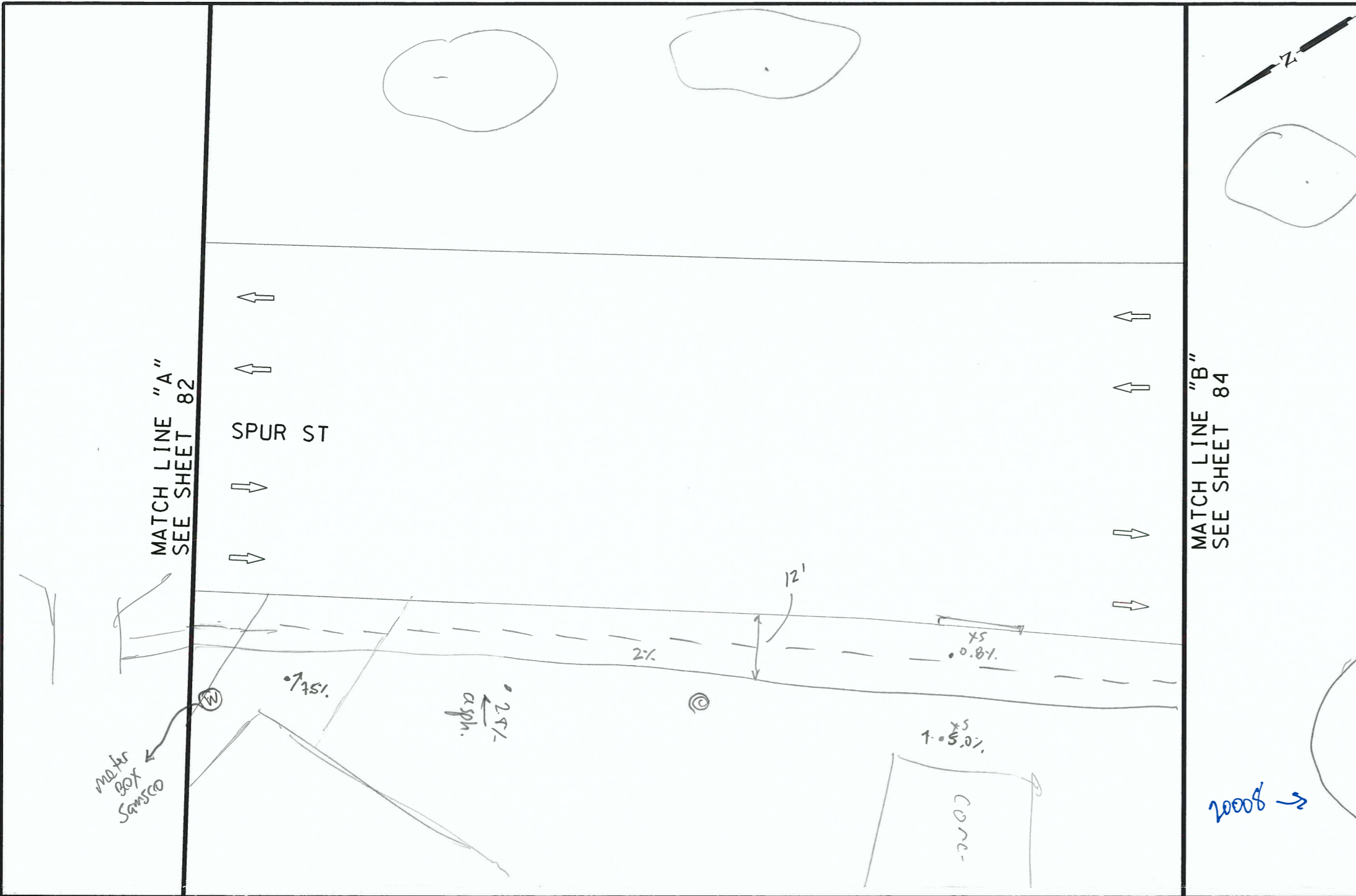


PLOTTED ON: 10/31/2016

DESIGN FILENAME: P:\111\38\00\Design\Civil\Roadway\1113800\_NB\_SpurSt\_SheetB.dgn



ITEM	DESCRIPTION	UNIT	QTY
------	-------------	------	-----



NB\_16-025\_WS\_47

*Amw*  
*11/1/16*  
*FD*

NOTES:

- \* FOR CONTRACTOR INFORMATION ONLY
- 1. THE EXISTENCE AND LOCATION OF ALL UTILITIES AND DRAINAGE STRUCTURES INDICATED IN THE PLANS ARE TAKEN FROM THE BEST RECORDS AVAILABLE AND ARE NOT GUARANTEED TO BE ACCURATE. CONTRACTOR SHALL COORDINATE WITH ALL UTILITY COMPANIES TO FIELD VERIFY UTILITIES PRIOR TO BEGINNING CONSTRUCTION.

DESIGN  
**INTERIM REVIEW**  
 DOCUMENT INCOMPLETE. NOT INTENDED FOR PERMIT, BIDDING OR CONSTRUCTION.  
 ENGINEER: JOHN A. TYLER  
 P.E. SERIAL NO: 105193  
 DATE: 10/31/2016

REVIEW AND APPROVAL  
**INTERIM REVIEW**  
 DOCUMENT INCOMPLETE. NOT INTENDED FOR PERMIT, BIDDING OR CONSTRUCTION.  
 ENGINEER: JAMES A. LUTZ  
 P.E. SERIAL NO: 84722  
 DATE: 10/31/2016

NOT TO SCALE

REV. NO.	DATE	DESCRIPTION	BY

SPECIAL NOTES & DETAILS

FOR ENVIRONMENTAL REVIEW ONLY

LEGEND

- |                            |                           |   |
|----------------------------|---------------------------|---|
| CAMERA POSITION            | LIGHT POLE                | LONGITUDINAL SLOPES MAY NOT EXCEED 5%. CROSS SLOPES MAY NOT EXCEED 2% |
| DRAINAGE FLOW ARROW        | LUMINAIRE STANDARD        | TRAFFIC FLOW  |
| FLARE                      | MAIL BOX                  | TRAFFIC SIGNAL BOX  |
| FIRE HYDRANT               | MANHOLE                   | TRAFFIC SIGNAL CONTROLLER   |
| GAS METER                  | NSPI NO SEPARATE PAY ITEM | TRAFFIC SIGNAL POLE   |
| GAS VALVE                  | PEDESTAL SIGNAL POLE      | TRANSFORMER   |
| GROUND BOX                 | PI POINT                  | TREE/BUSHES   |
| GUY ANCHOR                 | POWER/UTILITY POLE        | UTILITY PEDESTAL/MARKER   |
| IRRIGATION                 | R RAMP                    | UTILITY VAULT   |
| JUNCTION BOX               | RR RIPRAP (CONC)          | WATER METER   |
| L LANDING                  | SIGN                      | WATER VALVE   |
| L1 LANDING (COMMON)        | SODDING                   |   |
| LS LEVEL SIDEWALK (2% MAX) | TRANSITION                |   |

**PAPE-DAWSON ENGINEERS**  
 SAN ANTONIO | AUSTIN | HOUSTON | FORT WORTH | DALLAS  
 2000 NW LOOP 410 | SAN ANTONIO, TX 78213 | 210.375.9000  
 TBPE FIRM REGISTRATION #470 | TBPLS FIRM REGISTRATION #10028800

Texas Department of Transportation  
 © 2016

CURB RAMP PROGRAM

SPUR ST  
 SIDEWALK SHEET B

SHEET 2 OF 4

DCN:	FED. RD. DIV. NO.	STATE	CITY	HIGHWAY NO.
CHK DCN:	6	TEXAS	NEW BRAUNFELS	VA
DWG:	DIST.	COUNTY	CONT. NO.	SECT. NO.
CHK DWG:	SAT	COMAL		