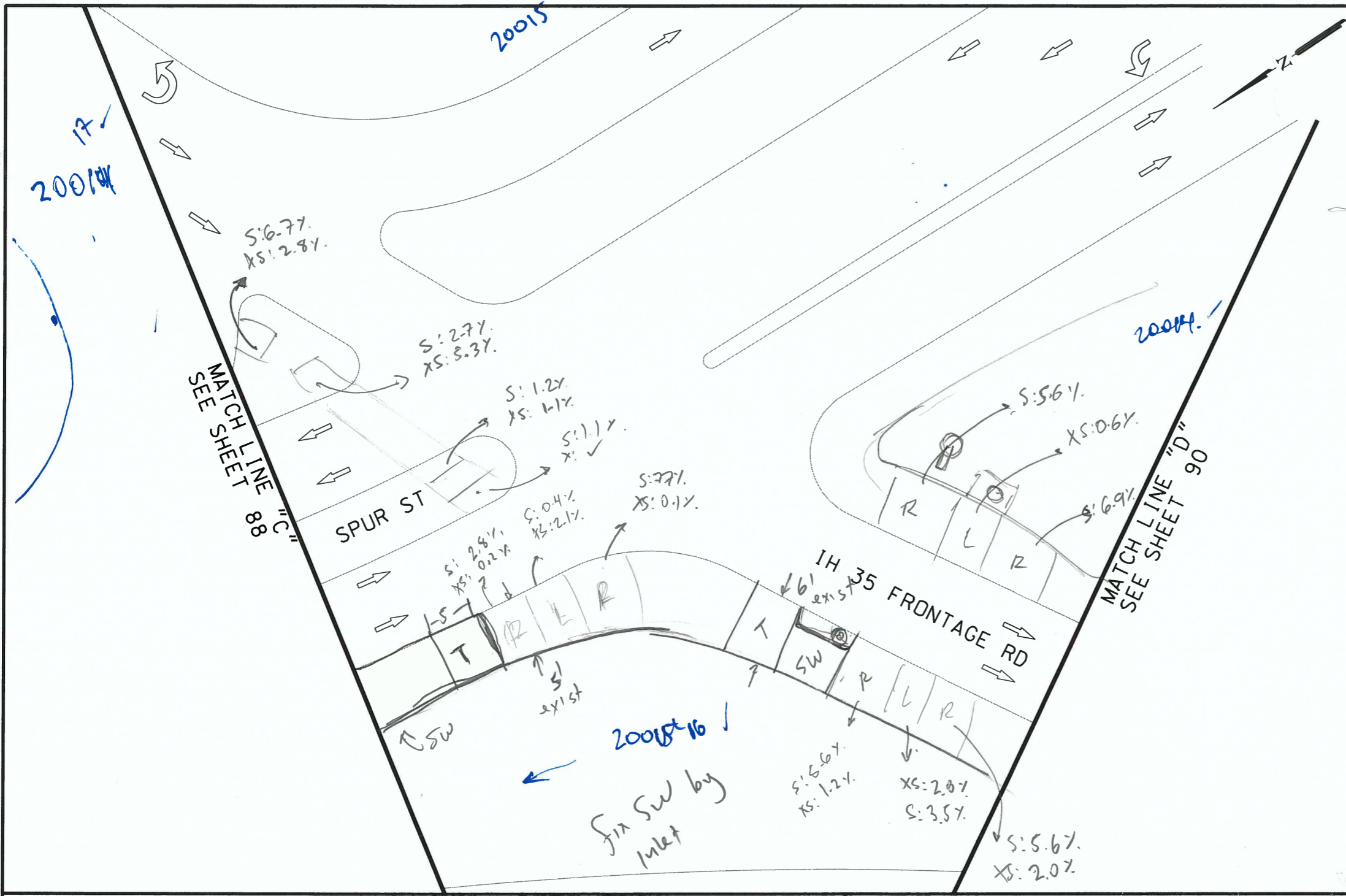


PLOTTED ON: 10/31/2016

DESIGN FILENAME: P:\111\38\00\Design\Civil\Roadway\113800_NB_IH_35_SBFR_SheetD.dgn



ITEM	DESCRIPTION	UNIT	QTY
------	-------------	------	-----



NB_16-025_WS_53

*Am
11/1/16
PA*

NOTES:
* FOR CONTRACTOR INFORMATION ONLY
1. THE EXISTENCE AND LOCATION OF ALL UTILITIES AND DRAINAGE STRUCTURES INDICATED IN THE PLANS ARE TAKEN FROM THE BEST RECORDS AVAILABLE AND ARE NOT GUARANTEED TO BE ACCURATE. CONTRACTOR SHALL COORDINATE WITH ALL UTILITY COMPANIES TO FIELD VERIFY UTILITIES PRIOR TO BEGINNING CONSTRUCTION DESIGN

INTERIM REVIEW
DOCUMENT INCOMPLETE. NOT INTENDED FOR PERMIT, BIDDING OR CONSTRUCTION.
ENGINEER: JOHN A. TYLER
P.E. SERIAL NO: 105193
DATE: 10/31/2016

INTERIM REVIEW
DOCUMENT INCOMPLETE. NOT INTENDED FOR PERMIT, BIDDING OR CONSTRUCTION.
ENGINEER: JAMES A. LUTZ
P.E. SERIAL NO: 84722
DATE: 10/31/2016

NOT TO SCALE

REV. NO.	DATE	DESCRIPTION	BY

PAPE-DAWSON ENGINEERS
SAN ANTONIO | AUSTIN | HOUSTON | FORT WORTH | DALLAS
2000 NW LOOP 410 | SAN ANTONIO, TX 78213 | 210.375.9000
TDBE FIRM REGISTRATION #470 | TBPLS FIRM REGISTRATION #10028800

Texas Department of Transportation
© 2016

CURB RAMP PROGRAM

IH 35 SBFR
SIDEWALK SHEET D

SHEET 4 OF 15

CDN:	FED. RD. DIV. NO.	STATE	CITY	HIGHWAY
CH1	6	TEXAS	NEW BRAUNFELS	VA
DWG:	DIST.	COUNTY	CONF. NO.	SECT. NO.
CH1	SAT	COMAL		
DWG:				SHEET NO.
CH1				89

SPECIAL NOTES & DETAILS

FOR ENVIRONMENTAL REVIEW ONLY

LEGEND

- CAMERA POSITION
- DRAINAGE FLOW ARROW
- FLARE
- FIRE HYDRANT
- GAS METER
- GAS VALVE
- GROUND BOX
- GUY ANCHOR
- IRRIGATION
- JUNCTION BOX
- LANDING
- L1 LANDING (COMMON)
- LS LEVEL SIDEWALK (2% MAX)
- LIGHT POLE
- LUMINAIRE STANDARD
- MAIL BOX
- MANHOLE
- NSPI NO SEPARATE PAY ITEM
- PEDESTAL SIGNAL POLE
- PI POINT
- POWER/UTILITY POLE
- R RAMP
- RR RIPRAP (CONC)
- SIGN
- SODDING
- T TRANSITION
- SL LONGITUDINAL SLOPES MAY NOT EXCEED 5%. CROSS SLOPES MAY NOT EXCEED 2%
- TRAFFIC FLOW
- TRAFFIC SIGNAL BOX
- TRAFFIC SIGNAL CONTROLLER
- TRAFFIC SIGNAL POLE
- TRANSFORMER
- TREE/BUSHES
- UTILITY PEDESTAL/MARKER
- UTILITY VAULT
- WATER METER
- WATER VALVE