

CULVERT ID D1

Hwy FM 140

CSJ 0748-04-042

Sta 191+26.70

Type Cross Culvert

Desc 2 ~ 6 FT X 4' & 2 ~
8 FT X 4 FT RCB

PHOTOS LEFT



PHOTOS RIGHT



PHOTOS CENTER



ELEMENT HISTORY

AS BUILT	CSJ	0748-04-00	MODIFIED	CSJ	0748-04-03
	Date	1950		Date	1996
	Design Freq (yr)	5		Left (ft)	Right (ft)
	Design Q (cfs)	914		Ext	- -

H&H

Design Freq (yr)	25	Q ₅ (cfs)	109
Existing Capacity, Q _E (cfs)	1064.5	Q ₁₀ (cfs)	132
Ponding at Q _D (ft)	-4.46	Q ₂₅ (cfs)	161

Design flow, Q_D

VISUAL

Bridge Class	Yes	Left End Trt	FW-0
Overall Condition	Good	Right End Trt	FW-0
Spalling	No	Pipe Runners	No
Rusted	No	In Out Condition	Sedimentation
Buckled	No	Recommend	Remain &
Remarks	Modification in 1996 added 2~8x4 RCBs. Receives contributions from DA C.		

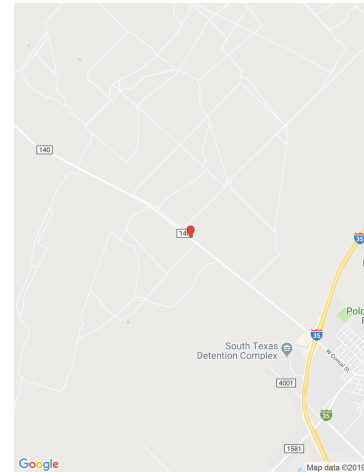
CULVERT ID: D1

ROADSIDE

Clear Zone Available (ft)	9.8
Guard Fence Req'd	Yes
>12" Cover	Yes

LOCATION MAP

Lat 28.920109
Long -99.143745



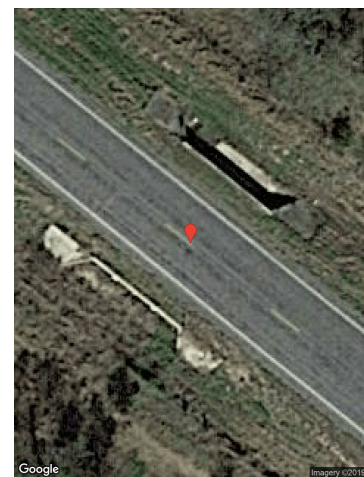
INTERIOR PHOTO LT



INTERIOR PHOTO RT



AERIAL MAP



<https://www.google.com/maps/search/?api=1&query=28.92010918,-99.14374565>