



**CIVIC/CONVENTION CENTER
375 South Castell Avenue
New Braunfels, TX 78130**

ADA SELF-EVALUATION FACILITY SURVEY

Conducted by



About This Report

This report has been developed as part of an overall self-evaluation and transition planning effort undertaken by the City of New Braunfels and as required by the Americans with Disabilities Act Title II Regulations for state and local government entities. The conditions cited within this report represent the findings of our team at the time of evaluation on May 12, 2021. Our survey included public areas and other areas where city programs are offered.

ADA Standards

The building or facility was evaluated for compliance with the 2010 ADA Standards. It should be noted that any renovation or alteration projects that are undertaken at this time and in the future must be designed to comply with the 2010 ADA Standards (or the most current adopted standard in effect at the time).

Prioritization

The non-compliant issues cited in this report have been assigned a prioritization for remediation – Priorities 1 through 4. This prioritization system is based upon priorities for barrier removal as published in the ADA Title III (§36.304). Although Title II entities are not required to undertake barrier removal steps in the same way as places of public accommodation, this system is considered a “best practice” for taking the necessary steps to bring buildings and facilities into compliance with the ADA.

Priority 1:	Accessible Approach and Entry
Priority 2:	Access to Goods and Services
Priority 3:	Toilet Rooms
Priority 4:	Additional Access

Recommendations and Cost

For each non-compliant item cited, a recommendation for remediation is included along with a rough order of magnitude cost. It should be noted that in many instances, there may be more than one way to correct an issue. We have made every effort to suggest the most logical and least expensive method of correction; however, other methods may prove to be more easily accomplished or less expensive. Additionally, our recommendations are based upon our visual observations and may not reflect hidden conditions that might render our suggestions infeasible or less cost-effective. The costs provided take in to account materials and labor but do not include any professional design fees.

New Braunfels Civic/Convention Center

Prepared by Kim Goss

Jun 29, 2021

Description

69 tasks in this report.

Contents

#4 Priority 1: Accessible Routes.....	4
#5 Priority 1: Accessible Routes.....	5
#6 Priority 1: Accessible Routes.....	6
#10 Priority 1: Accessible Routes.....	7
#8 Priority 1: Entrances.....	8
#1 Priority 1: Parking.....	9
#3 Priority 1: Parking.....	10
#9 Priority 1: Parking.....	12
#7 Priority 1: Ramps.....	14
#17 Priority 2: Doors.....	16
#18 Priority 2: Doors.....	18
#26 Priority 2: Doors.....	20
#61 Priority 2: Doors.....	21
#73 Priority 2: Doors.....	22
#27 Priority 2: Elevators/Lifts.....	23
#12 Priority 2: Reach Range	25
#59 Priority 2: Reach Range	27
#60 Priority 2: Reach Range	28
#67 Priority 2: Reach Range	30

#25 Priority 2: Sinks	32
#58 Priority 2: Sinks	33
#14 Priority 2: Protruding Objects	34
#15 Priority 2: Protruding Objects	36
#21 Priority 2: Protruding Objects	38
#22 Priority 2: Protruding Objects	40
#16 Priority 2: Ramps.....	42
#29 Priority 3: Baby Changing Stations.....	44
#35 Priority 3: Baby Changing Stations.....	46
#33 Priority 3: Toilet Compartments	47
#37 Priority 3: Toilet Compartments	48
#38 Priority 3: Toilet Compartments	49
#43 Priority 3: Toilet Compartments	50
#44 Priority 3: Toilet Compartments	51
#45 Priority 3: Toilet Compartments	52
#46 Priority 3: Toilet Compartments	53
#50 Priority 3: Toilet Compartments	54
#54 Priority 3: Toilet Compartments	55
#55 Priority 3: Toilet Compartments	56
#56 Priority 3: Toilet Compartments	57
#57 Priority 3: Toilet Compartments	58
#19 Priority 3: Doors.....	59
#20 Priority 3: Doors.....	60
#66 Priority 3: Benches	61
#68 Priority 3: Benches	62
#31 Priority 3: Grab Bars.....	63

#39 Priority 3: Grab Bars.....	65
#47 Priority 3: Grab Bars.....	67
#51 Priority 3: Grab Bars.....	69
#63 Priority 3: Grab Bars.....	71
#70 Priority 3: Grab Bars.....	73
#53 Priority 3: Mirrors	75
#28 Priority 3: Reach Range	76
#30 Priority 3: Reach Range	78
#36 Priority 3: Reach Range	79
#40 Priority 3: Reach Range	80
#41 Priority 3: Reach Range	81
#42 Priority 3: Reach Range	82
#65 Priority 3: Reach Range	83
#72 Priority 3: Reach Range	84
#52 Priority 3: Urinals	85
#32 Priority 3: Water Closets.....	86
#34 Priority 3: Water Closets.....	87
#48 Priority 3: Water Closets.....	89
#49 Priority 3: Water Closets.....	90
#62 Priority 3: Water Closets.....	91
#64 Priority 3: Water Closets.....	93
#69 Priority 3: Water Closets.....	94
#71 Priority 3: Water Closets.....	96
#23 Priority 4: Vending Machines.....	97

#4 Priority 1: Accessible Routes

Status

Open

Location

Public Lot off S Castell

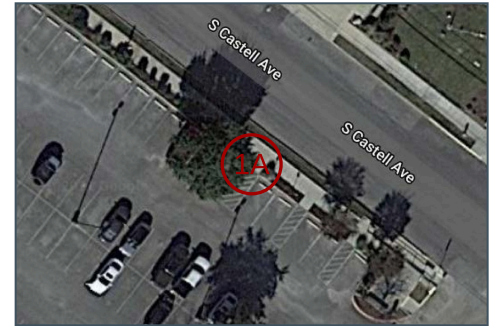
Description

The route from the van accessible parking space to the public sidewalk has an approximate 1" wide gap.

Recommendation: Fill gap with caulking material.

Sheet

C3



Cost Impact

100

Photos



Kim Goss
May 12, 2021 9:47 AM



Kim Goss
May 12, 2021 9:47 AM



Kim Goss
May 12, 2021 9:47 AM

#5 Priority 1: Accessible Routes

Status

Open

Location

Public Lot off S Castell

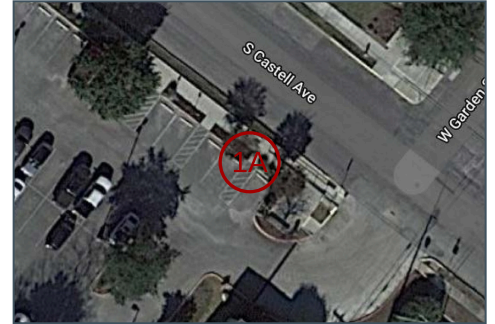
Description

The route from the easternmost accessible parking spaces to the public sidewalk has two approximately 1" wide gaps.

Recommendation: Fill gaps with caulking material.

Sheet

C3



Cost Impact

200

Photos



Kim Goss
May 12, 2021 9:45 AM



Kim Goss
May 12, 2021 9:45 AM



Kim Goss
May 12, 2021 9:45 AM

#6 Priority 1: Accessible Routes

Status

Open

Location

Public Lot off S Castell

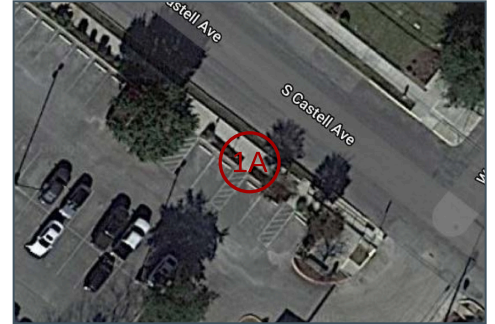
Description

The route from the two center accessible parking spaces to the public sidewalk has two approximately 1" wide gaps.

Recommendation: Fill gaps with caulking material.

Sheet

C3



Cost Impact

200

Photos



Kim Goss
May 12, 2021 9:47 AM



Kim Goss
May 12, 2021 9:47 AM



Kim Goss
May 12, 2021 9:47 AM

#10 Priority 1: Accessible Routes

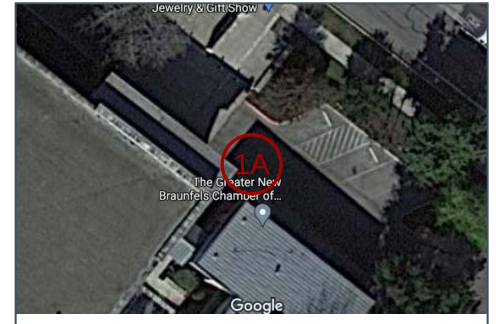
Status
Open

Sheet
C2

Location
Route from South Accessible
Parking

Description
The base of the curb ramp
has a change in level of
approximately 1/2".

Recommendation: Grind the
edge to create a maximum
1:2 bevel.



Cost Impact
200

Photos



Kim Goss
May 12, 2021 10:09 AM



Kim Goss
May 12, 2021 10:09 AM



Kim Goss
May 12, 2021 10:09 AM

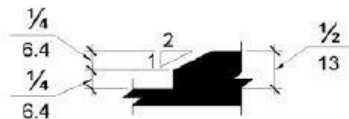


Figure 303.3 Beveled Change in Level

303.3(a)
Kim Goss
Jun 24, 2021 9:15 AM

#8 Priority 1: Entrances

Status

Open

Location

South Entrance

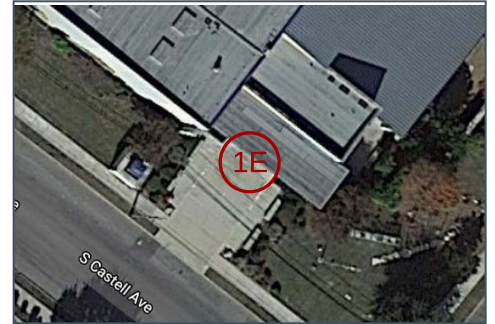
Description

The door maneuvering area on the pull side of the entrance doors has a running slope of approximately 3.1%.

Recommendation: Replace landing area at door and stair.

Sheet

C3



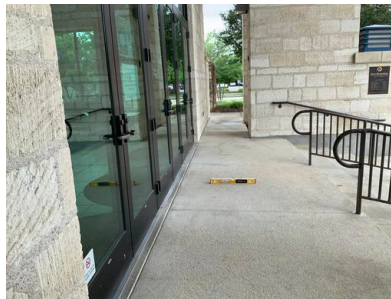
Cost Impact

12500

Photos



Kim Goss
May 12, 2021 9:57 AM



Kim Goss
May 12, 2021 9:57 AM



Kim Goss
May 12, 2021 9:58 AM

#1 Priority 1: Parking

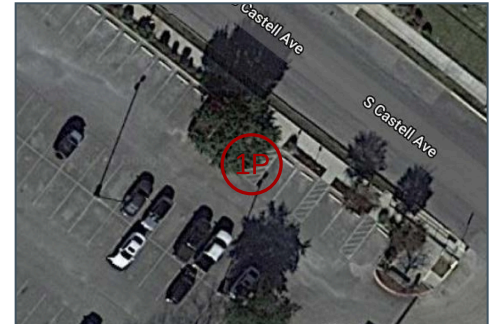
Status
Open

Location
Public Lot off S Castell

Description
The van accessible parking space and access aisle have a running slope of up to 3.3% and has some cracking and gaps in the asphalt.

Recommendation: Replace asphalt surface at parking space and access aisle.

Sheet
C3



Cost Impact
3500

Photos



Kim Goss
May 12, 2021 9:40 AM



Kim Goss
May 12, 2021 9:40 AM



Kim Goss
May 12, 2021 9:40 AM



Kim Goss
May 12, 2021 9:40 AM



Kim Goss
May 12, 2021 9:43 AM



Kim Goss
May 12, 2021 9:43 AM

#3 Priority 1: Parking

Status

Open

Location

Public Lot off S Castell

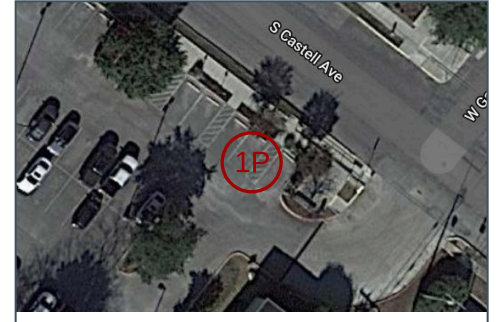
Description

The three easternmost accessible parking spaces have cracking and gaps in the asphalt, and the easternmost accessible parking space has a running slope of up to 2.8%.

Recommendation: Replace asphalt surface at parking spaces and access aisles.

Sheet

C3



Cost Impact

7000

Photos



Photo May 12, 9 36 56 AM

Kim Goss

May 12, 2021 9:36 AM



Photo May 12, 9 37 03 AM

Kim Goss

May 12, 2021 9:37 AM



Photo May 12, 9 38 35 AM

Kim Goss

May 12, 2021 9:38 AM



Photo May 12, 9 38 44 AM

Kim Goss

May 12, 2021 9:38 AM



Kim Goss

May 12, 2021 9:44 AM

#9 Priority 1: Parking

Status
Open

Location
North Parking Lot

Description
Both accessible parking spaces and the shared access aisle have excessive cross slopes ranging from 3.3% to 3.9%.

Recommendation: Replace asphalt surface at parking spaces.

Photos



Photo May 12, 10 03 07 AM
Kim Goss
May 12, 2021 10:03 AM

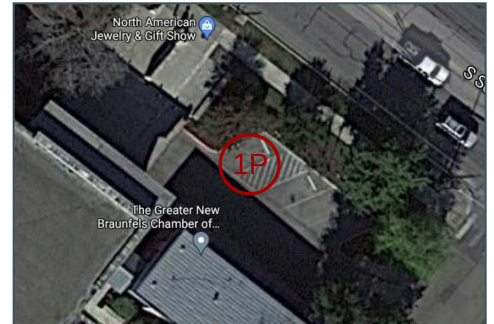


Photo May 12, 10 03 34 AM
Kim Goss
May 12, 2021 10:03 AM



Photo May 12, 10 03 42 AM
Kim Goss
May 12, 2021 10:03 AM

Sheet
C2



Cost Impact
6500



Photo May 12, 10 04 22 AM
Kim Goss
May 12, 2021 10:04 AM



Photo May 12, 10 04 29 AM
Kim Goss
May 12, 2021 10:04 AM



Photo May 12, 10 04 43 AM
Kim Goss
May 12, 2021 10:04 AM



Photo May 12, 10 04 50 AM
Kim Goss
May 12, 2021 10:04 AM

#7 Priority 1: Ramps

Status

Open

Location

Route to South Entrance

Description

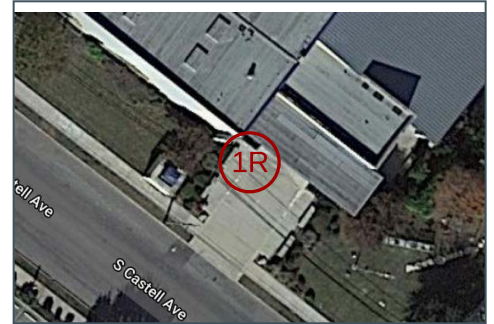
The ramp at the south entrance has the following issues:

- 1) Excessive gaps surrounding the bottom landing
- 2) Missing handrail extension on one side of the top and bottom landings
- 3) Intermediate landing is less than 60" x 60" clear
- 4) Upper landing has a cross slope of approximately 2.8%

Recommendation: Remove and replace ramp.

Sheet

C3



Cost Impact

7500

Photos

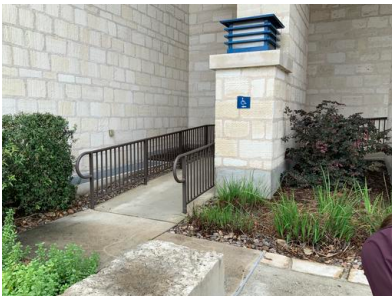


Photo May 12, 9 49 51 AM

Kim Goss

May 12, 2021 9:49 AM



Photo May 12, 9 52 25 AM

Kim Goss

May 12, 2021 9:52 AM



Photo May 12, 9 52 43 AM

Kim Goss

May 12, 2021 9:52 AM



Photo May 12, 9 53 11 AM
Kim Goss
May 12, 2021 9:53 AM

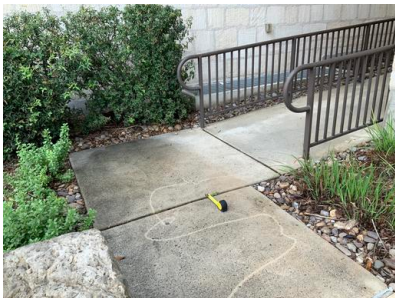


Photo May 12, 9 55 46 AM
Kim Goss
May 12, 2021 9:55 AM



Photo May 12, 9 55 53 AM
Kim Goss
May 12, 2021 9:55 AM



Photo May 12, 9 56 02 AM
Kim Goss
May 12, 2021 9:56 AM



Photo May 12, 9 56 09 AM
Kim Goss
May 12, 2021 9:56 AM

#17 Priority 2: Doors

Status

Open

Location

Loading Dock Corridor

Description

Door vision panels in 12 doors (Exhibit Hall and Kitchen) are positioned with the bottom of the glass 56-1/4" high.

Recommendation: Install doors with vision panels no higher than 43".

(Note: If these doors were installed prior to March 15, 2012, they may enjoy safe harbor until they are replaced.)

Sheet

A1



Cost Impact

3000

Photos



Kim Goss

May 12, 2021 11:05 AM



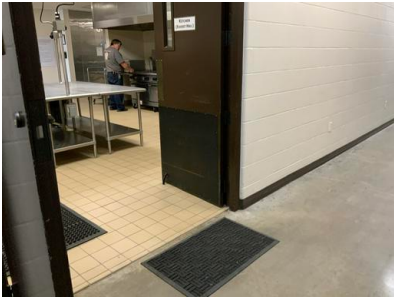
Kim Goss

May 12, 2021 11:05 AM



Kim Goss

May 12, 2021 11:05 AM



Kim Goss

May 12, 2021 11:05 AM



Kim Goss

May 12, 2021 11:05 AM

#18 Priority 2: Doors

Status

Open

Location

Concourse

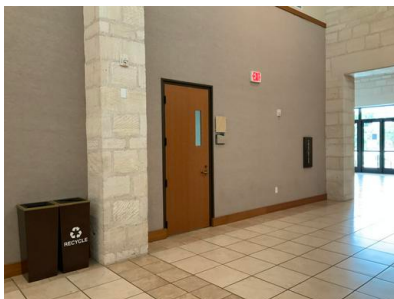
Description

Door vision panels in the 5 conference room doors are positioned with the bottom of the glass more than 43" high.

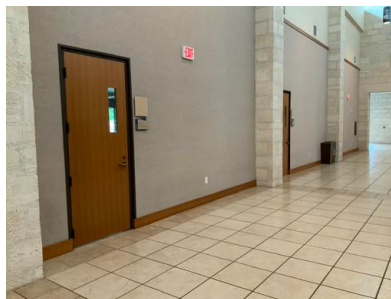
Recommendation: Install doors with vision panels no higher than 43".

(Note: If these doors were installed prior to March 15, 2012, they may enjoy safe harbor until they are replaced.)

Photos



Kim Goss
May 12, 2021 11:09 AM



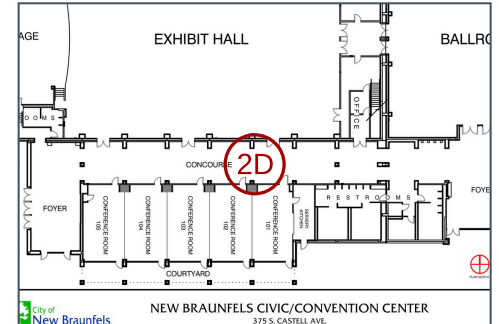
Kim Goss
May 12, 2021 11:09 AM



Kim Goss
May 12, 2021 11:09 AM

Sheet

A1



Cost Impact

3750



Kim Goss
May 12, 2021 11:09 AM



Kim Goss
May 12, 2021 11:09 AM



Kim Goss
May 12, 2021 11:09 AM

#26 Priority 2: Doors

Status

Open

Location

Loading Dock Corridor

Description

Four doors (ballroom and kitchen) do not have a smooth surface on the bottom 10" of the push side due to installed door stops.

Recommendation: Remove door stops.

(Note: If these doors were installed prior to March 15, 2012, they may enjoy safe harbor until they are replaced.)

Sheet

A1



Photos



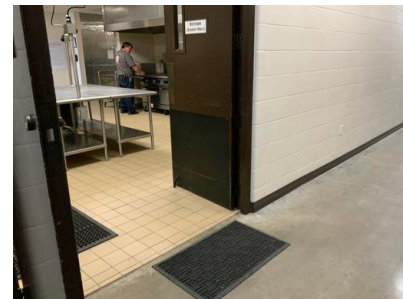
Kim Goss

May 12, 2021 11:03 AM



Kim Goss

May 12, 2021 11:04 AM



Kim Goss

May 12, 2021 11:04 AM

#61 Priority 2: Doors

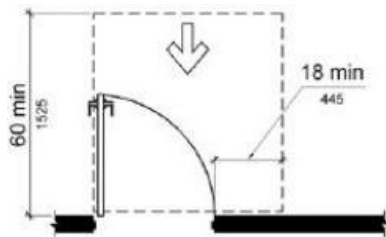
Status
Open

Location
Women's Dressing Room

Description
The door has only 17-1/2" of clearance past the strike on the pull side.

Recommendation: Although the clearance is technically less than the allowable, this appears to be within reasonable tolerance. If this door is modified or replaced in the future, correction will be required.

Photos



404.2.4.1(a)

Kim Goss

May 16, 2020 12:37 PM



Kim Goss

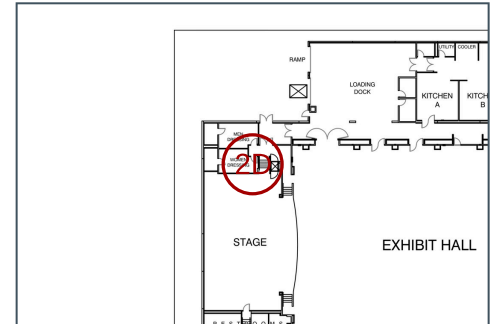
May 12, 2021 10:47 AM



Kim Goss

May 12, 2021 10:47 AM

Sheet
A1



#73 Priority 2: Doors

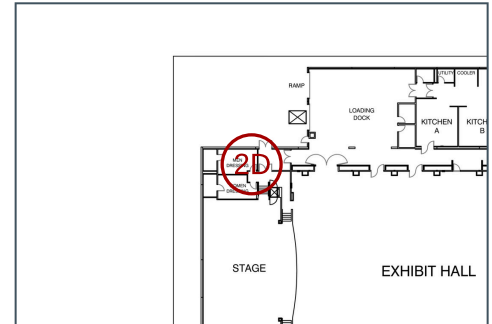
Status
Open

Location
Men's Dressing Room

Description
The door has a 49" wide side approach on the pull side. Doors with closers require a minimum 54" side approach width.

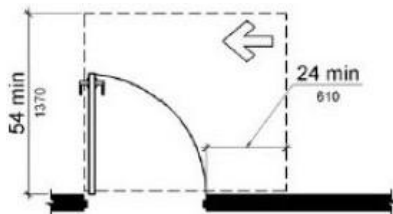
Recommendation: Remove door closer.

Sheet
A1



Cost Impact
150

Photos



404.2.4.1(i)
Kim Goss
May 16, 2020 12:29 PM



Kim Goss
May 12, 2021 10:45 AM



Kim Goss
May 12, 2021 10:45 AM



Kim Goss
May 12, 2021 10:45 AM

#27 Priority 2: Elevators/Lifts

Status

Open

Location

Exhibit Hall

Description

The platform lift to the stage has a clear width of only 34-1/2".

Recommendation: Install a compliant platform lift with a minimum clear width of 36".
(Note: If this lift was installed prior to March 15, 2012, it may enjoy safe harbor until replaced.)

Sheet

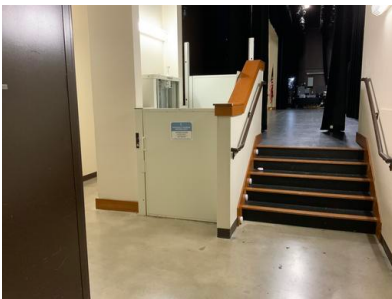
A1



Cost Impact

12000

Photos



Kim Goss

May 12, 2021 10:48 AM



Kim Goss

May 12, 2021 10:49 AM



Kim Goss

May 12, 2021 10:49 AM



Kim Goss

May 12, 2021 10:50 AM

#12 Priority 2: Reach Range

Status

Open

Location

Women's Dressing Room

Description

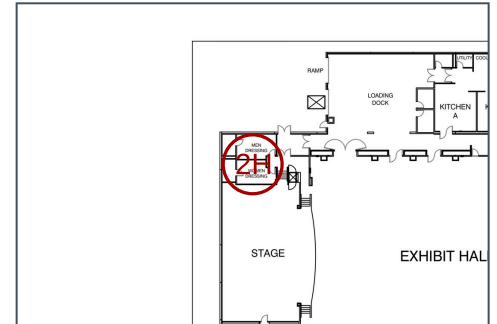
The shelf above the clothes rod is 51-1/2" high.

Recommendation: Lower a portion of rod and shelf to a maximum height of 48".

(Note: If this shelf was installed prior to March 15, 2012, it may enjoy safe harbor until modified or replaced.)

Sheet

A1



Cost Impact

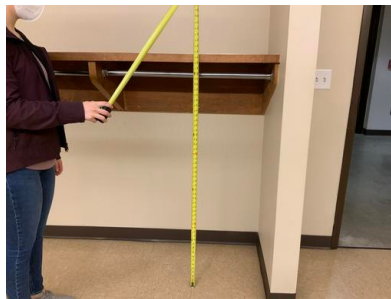
250

Photos



Kim Goss

May 12, 2021 10:36 AM



Kim Goss

May 12, 2021 10:36 AM



Kim Goss

May 12, 2021 10:36 AM



Kim Goss
May 12, 2021 10:36 AM

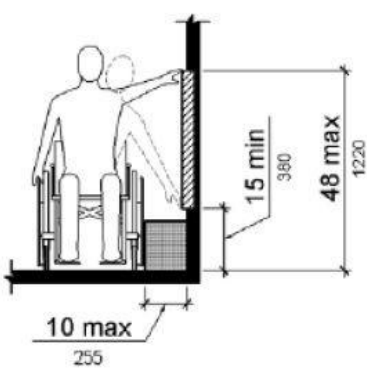


Figure 308.3.1 Unobstructed Side Reach

308.3.1
Kim Goss
Jun 24, 2021 9:28 AM

#59 Priority 2: Reach Range

Status
Open

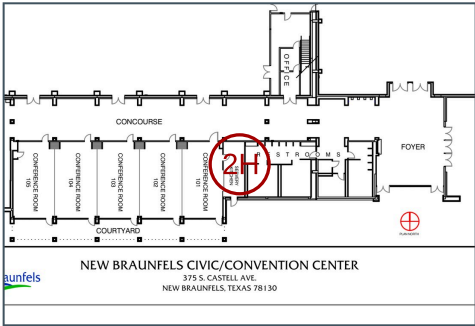
Location
Conference Kitchen

Description
The soap dispenser is positioned with the operable part 51-3/4" high.

Recommendation:
Reposition dispenser with operable parts no more than 44" high.

Photos

Sheet
A1



Cost Impact
200



Kim Goss
May 12, 2021 10:23 AM



Kim Goss
May 12, 2021 10:23 AM



Kim Goss
May 12, 2021 10:24 AM



Kim Goss
May 12, 2021 10:24 AM

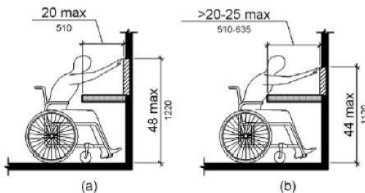


Figure 308.2.2 Obstructed High Forward Reach

308.2.2
Kim Goss
Jun 24, 2021 10:21 AM

#60 Priority 2: Reach Range

Status

Open

Location

Conference Kitchen

Description

The disposal switch and convenience outlets are positioned 47-3/4" high.

Recommendation:

Reposition the disposal switch and outlets with all operable parts and receptacles 46" high maximum.

Photos



Kim Goss
May 12, 2021 10:24 AM



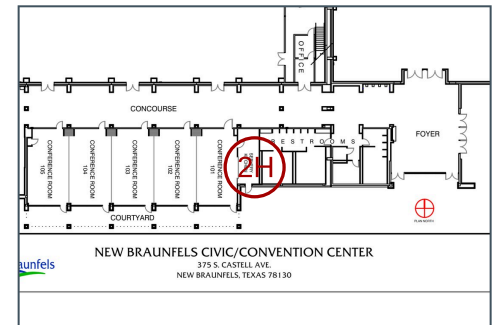
Kim Goss
May 12, 2021 10:24 AM



Kim Goss
May 12, 2021 10:24 AM

Sheet

A1



Cost Impact

1000



Kim Goss
May 12, 2021 10:25 AM

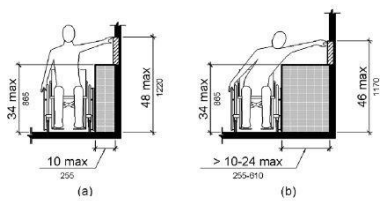


Figure 308.3.2 Obstructed High Side Reach

308.3.2
Kim Goss
Jun 24, 2021 10:22 AM

#67 Priority 2: Reach Range

Status
Open

Location
Men's Dressing Room

Description
The shelf above the clothes rod is 51-3/4" high.

Recommendations: Lower a portion of rod and shelf to a maximum height of 48".
(Note: If this shelf was installed prior to March 15, 2012, it may enjoy safe harbor until modified or replaced.)

Sheet
A1



Cost Impact
250

Photos



Kim Goss
May 12, 2021 10:40 AM



Kim Goss
May 12, 2021 10:42 AM



Kim Goss
May 12, 2021 10:42 AM

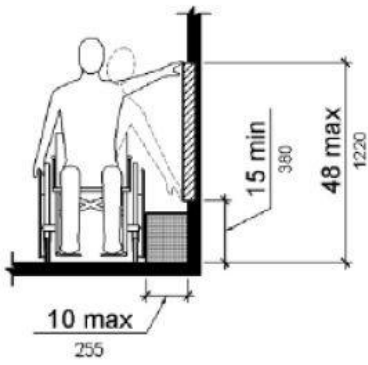


Figure 308.3.1 Unobstructed Side Reach

308.3.1

Kim Goss

Jun 24, 2021 9:23 AM

#25 Priority 2: Sinks

Status
Open

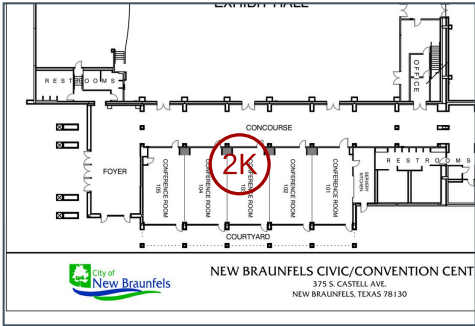
Location
Conference Rooms

Description
The sinks in each of the 5 conference rooms have a toe space that is only 7" high.

Recommendation: Modify panel to provide a minimum 9" high toe space.

Photos

Sheet
A1



Cost Impact
8750



Kim Goss
May 12, 2021 10:22 AM



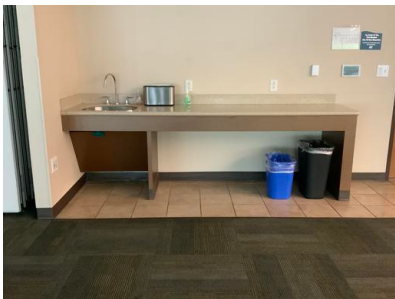
Kim Goss
May 12, 2021 10:26 AM



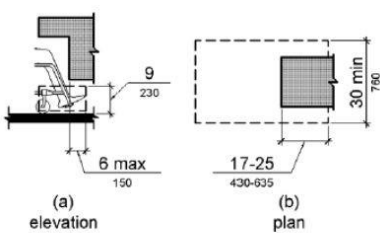
Kim Goss
May 12, 2021 10:26 AM



Kim Goss
May 12, 2021 10:26 AM



Kim Goss
May 12, 2021 10:28 AM



306.2
Kim Goss
Jun 24, 2021 10:20 AM

#58 Priority 2: Sinks

Status
Open

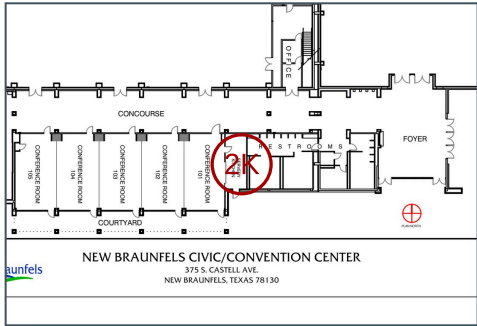
Location
Conference Kitchen

Description
The sink has a knee space height of only 25" below the sink.

Recommendation: Replace sink with a shallower model.

Photos

Sheet
A1



Cost Impact
1000



Kim Goss
May 12, 2021 10:23 AM



Kim Goss
May 12, 2021 10:23 AM



Kim Goss
May 12, 2021 10:23 AM

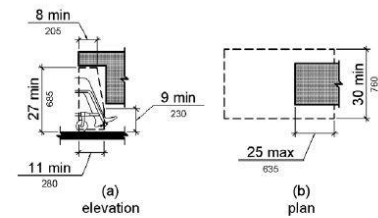


Figure 306.3 Knee Clearance

306.3
Kim Goss
Jun 24, 2021 10:22 AM

#14 Priority 2: Protruding Objects

Status

Open

Location

Backstage Vestibule

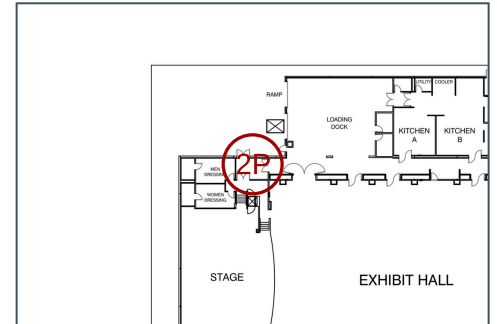
Description

A series of panels and equipment boxes project more than 4" from the wall between 27" and 80" high.

Recommendation: Add cane detection railing below.

Sheet

A1



Cost Impact

500

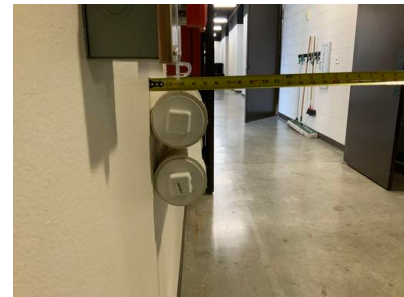
Photos



Kim Goss
May 12, 2021 10:53 AM



Kim Goss
May 12, 2021 10:53 AM



Kim Goss
May 12, 2021 10:53 AM



Kim Goss
May 12, 2021 10:53 AM



Kim Goss
May 12, 2021 10:53 AM



Kim Goss
May 12, 2021 10:53 AM



Kim Goss
May 12, 2021 10:53 AM

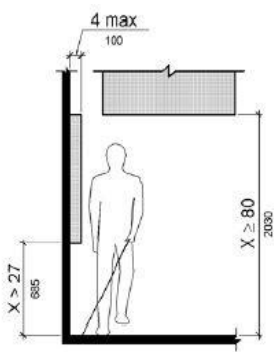


Figure 307.2 Limits of Protruding Objects

307.2
Kim Goss
Jun 24, 2021 9:22 AM

#15 Priority 2: Protruding Objects

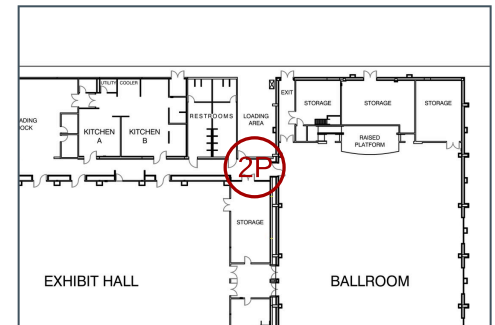
Status
Open

Location
Loading Dock Corridor

Description
The panel box near the ballroom projects more than 4" from the wall between 27" and 80" high.

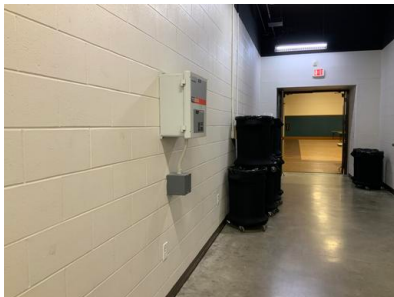
Recommendation: Add cane detection railing below.

Sheet
A1

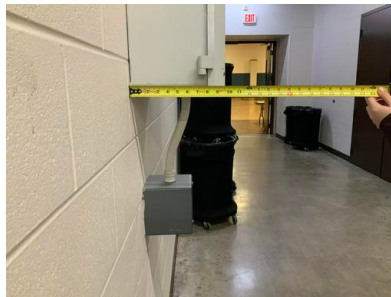


Cost Impact
500

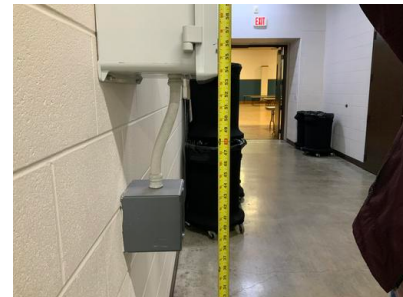
Photos



Kim Goss
May 12, 2021 10:55 AM



Kim Goss
May 12, 2021 10:55 AM



Kim Goss
May 12, 2021 10:55 AM



Kim Goss
May 12, 2021 10:55 AM



Kim Goss
May 12, 2021 10:55 AM

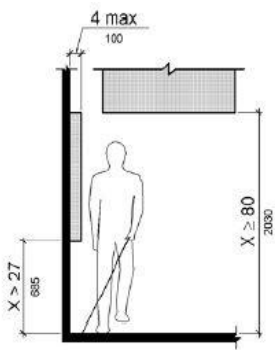


Figure 307.2 Limits of Protruding Objects

307.2
Kim Goss
Jun 24, 2021 10:18 AM

#21 Priority 2: Protruding Objects

Status

Open

Location

Concourse

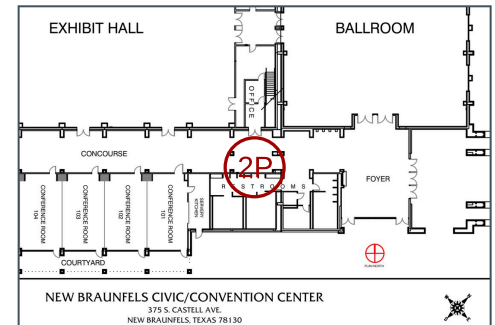
Description

The Blood Control Kit and AED boxes project more than 4" from the wall at a height of 27" to 80" high.

Recommendation: Add cane detection element below.

Sheet

A1



Cost Impact

500

Photos



Kim Goss
May 12, 2021 11:25 AM



Kim Goss
May 12, 2021 11:25 AM



Kim Goss
May 12, 2021 11:25 AM



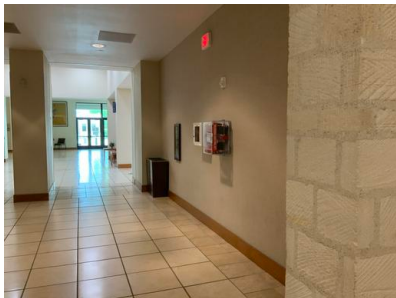
Kim Goss
May 12, 2021 11:25 AM



Kim Goss
May 12, 2021 11:25 AM



Kim Goss
May 12, 2021 11:25 AM



Kim Goss
May 12, 2021 11:25 AM

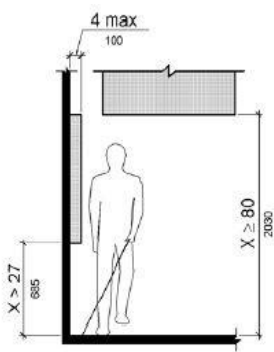


Figure 307.2 Limits of Protruding Objects

307.2
Kim Goss
Jun 24, 2021 10:24 AM

#22 Priority 2: Protruding Objects

Status

Open

Location

Concourse

Description

The wall-mounted TV outside of the office entrance projects more than 4" from the wall at a height of 27" to 80".

Recommendation: Add cane detection element below.

Photos



Kim Goss

May 12, 2021 11:26 AM



Kim Goss

May 12, 2021 11:26 AM

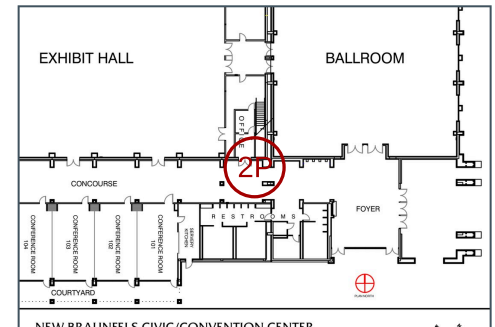


Kim Goss

May 12, 2021 11:26 AM

Sheet

A1



Cost Impact

500



Kim Goss
May 12, 2021 11:26 AM



Kim Goss
May 12, 2021 11:26 AM

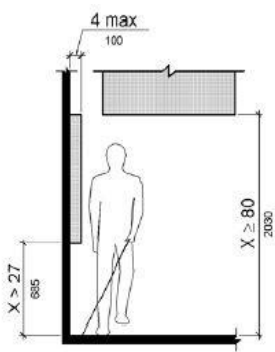


Figure 307.2 Limits of Protruding Objects

307.2
Kim Goss
Jun 24, 2021 10:23 AM

#16 Priority 2: Ramps

Status

Open

Location

Ballroom

Description

The ramp to the stage has the following noncompliant conditions:

- 1) The slope of both runs are approximately 8.5%; however, it may be considered within reasonable construction tolerance
- 2) The bottom landing has an approximate 1/2" high change in level
- 3) The intermediate landing is not 60" x 60" clear

Recommendation: Remove and replace ramp.

Photos

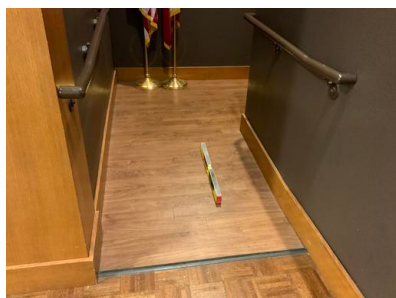


Photo May 12, 10 58 46 AM
Kim Goss
May 12, 2021 10:58 AM



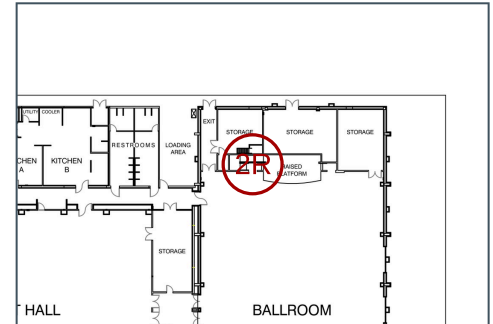
Photo May 12, 10 58 55 AM
Kim Goss
May 12, 2021 10:58 AM



Photo May 12, 10 59 19 AM
Kim Goss
May 12, 2021 10:59 AM

Sheet

A1



Cost Impact

7500

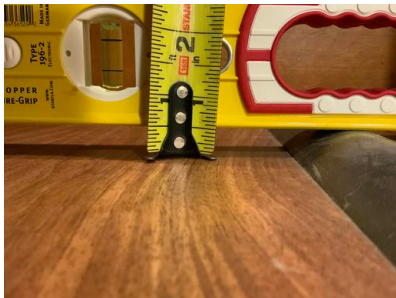


Photo May 12, 10 59 29 AM
Kim Goss
May 12, 2021 10:59 AM

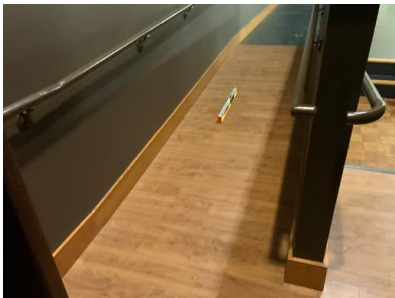


Photo May 12, 11 00 20 AM
Kim Goss
May 12, 2021 11:00 AM

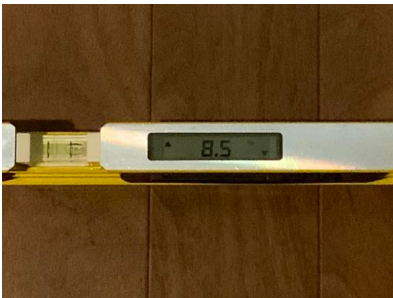


Photo May 12, 11 00 33 AM
Kim Goss
May 12, 2021 11:00 AM



Photo May 12, 11 01 27 AM
Kim Goss
May 12, 2021 11:01 AM



Photo May 12, 11 01 37 AM
Kim Goss
May 12, 2021 11:01 AM



Photo May 12, 11 02 24 AM
Kim Goss
May 12, 2021 11:02 AM

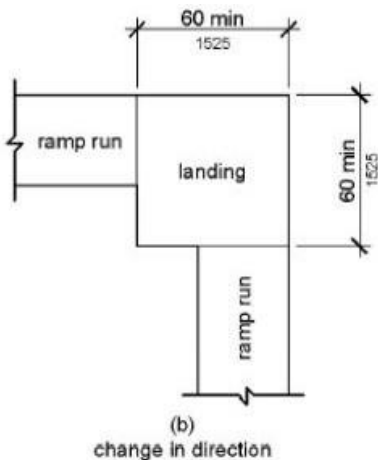


Figure 405.7 Ramp Landings

405.7(b)
Kim Goss
Jun 29, 2021 2:08 PM

#29 Priority 3: Baby Changing Stations

Status

Open

Location

South Women's Restroom

Description

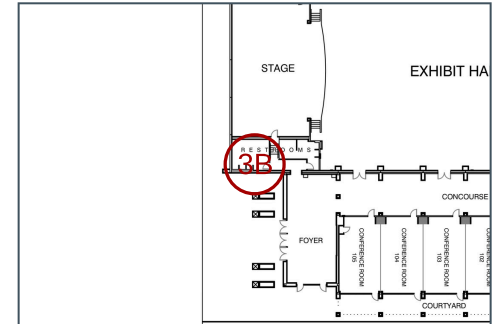
The surface of the baby changing table is 34-1/2" high in the open position. (Please note that TDLR considers baby changing stations to be protruding objects in their open position where the bottom of the table is more than 27" high. In this instance, the table obstructs the door maneuvering clearance in the open position.)

Recommendation: Relocate baby changing station outside of the door maneuvering area and position with the top of the table 28" to 34" high in the open position.

Photos

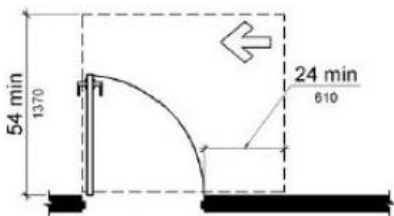
Sheet

A1



Cost Impact

450



404.2.4.1(i)
Kim Goss
May 16, 2020 12:29 PM



Kim Goss
May 12, 2021 11:12 AM



Kim Goss
May 12, 2021 11:12 AM



Kim Goss
May 12, 2021 11:12 AM

#35 Priority 3: Baby Changing Stations

Status
Open

Location
South Men's Restroom

Description
The surface of the baby changing table is 35" high in the open position.
(Please note that TDLR considers baby changing stations to be protruding objects in their open position where the bottom of the table is more than 27" high.)

Recommendation:
Reposition the baby changing station so that the top of the table 28" to 34" high and the bottom of the table is exactly 27" in the open position.

Sheet
A1



Cost Impact
450

Photos



Kim Goss
May 12, 2021 11:17 AM



Kim Goss
May 12, 2021 11:18 AM



Kim Goss
May 12, 2021 11:18 AM

#33 Priority 3: Toilet Compartments

Status

Open

Location

South Women's Restroom

Description

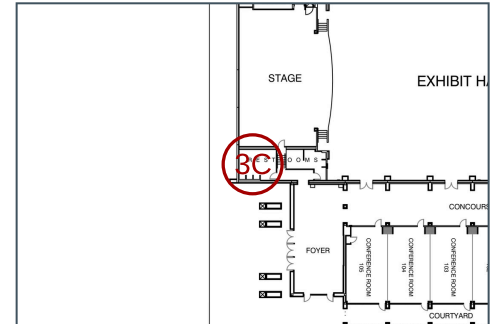
The door to the wheelchair accessible toilet stall does not have a pull on the inside.

Recommendation: Install door pull.

(Note: If the stall door and hardware were installed prior to March 15, 2012, it may enjoy safe harbor until replaced.)

Sheet

A1



Cost Impact

100

Photos



Kim Goss

May 12, 2021 11:14 AM

#37 Priority 3: Toilet Compartments

Status

Open

Location

South Men's Restroom

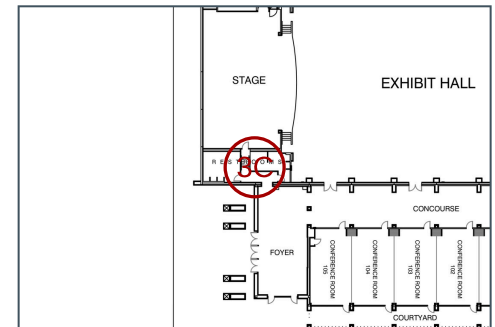
Description

The door to the wheelchair accessible toilet stall is not self-closing.

Recommendation: Adjust door hinges.

Sheet

A1



Cost Impact

225

Photos



Kim Goss

May 12, 2021 11:18 AM

#38 Priority 3: Toilet Compartments

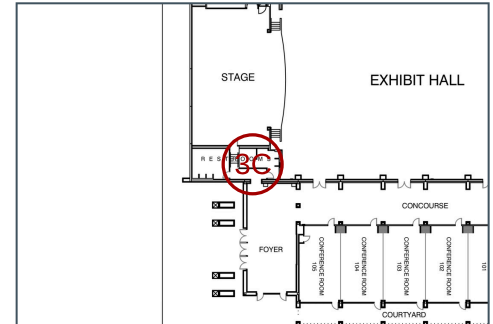
Status
Open

Location
South Men's Restroom

Description
The door to the wheelchair accessible toilet stall does not have a pull on the inside.

Recommendation: Install door pull.
(Note: If the stall door and hardware were installed prior to March 15, 2012, it may enjoy safe harbor until replaced.)

Sheet
A1



Cost Impact
100

Photos



Kim Goss
May 12, 2021 11:18 AM



Kim Goss
May 12, 2021 11:19 AM

#43 Priority 3: Toilet Compartments

Status

Open

Location

North Women's Restroom

Description

The door to the wheelchair accessible toilet stall does not have a pull on the inside.

Recommendation: Install door pull.

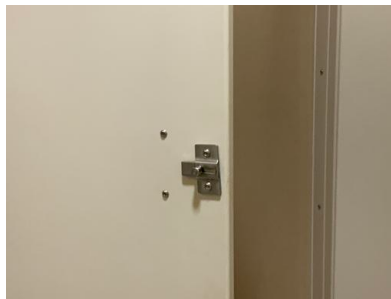
(Note: If the stall door and hardware were installed prior to March 15, 2012, it may enjoy safe harbor until replaced.)

Photos



Kim Goss

May 12, 2021 11:35 AM

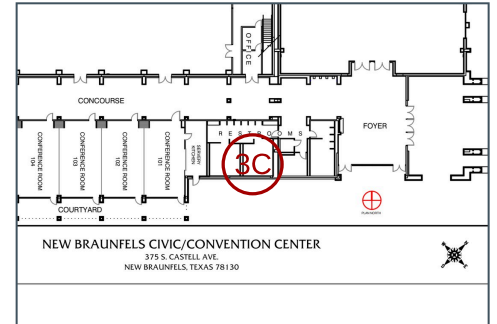


Kim Goss

May 12, 2021 11:35 AM

Sheet

A1



Cost Impact

100

#44 Priority 3: Toilet Compartments

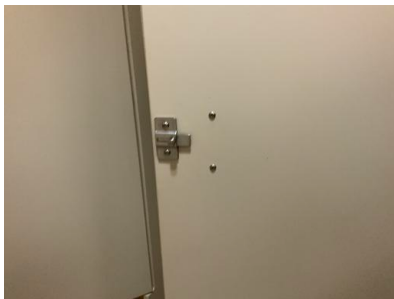
Status
Open

Location
North Women's Restroom

Description
The door to the ambulatory accessible toilet stall does not have a pull on the inside.

Recommendation: Install door pull.
(Note: If the stall door and hardware were installed prior to March 15, 2012, it may enjoy safe harbor until replaced.)

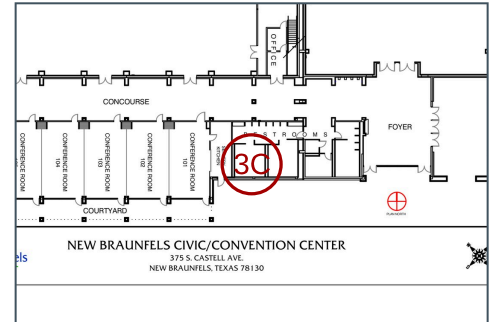
Photos



Kim Goss

May 12, 2021 11:32 AM

Sheet
A1



Cost Impact
100

#45 Priority 3: Toilet Compartments

Status

Open

Location

North Women's Restroom

Description

The door to the wheelchair accessible toilet stall is not self-closing.

Recommendation: Adjust door hinge.

Photos

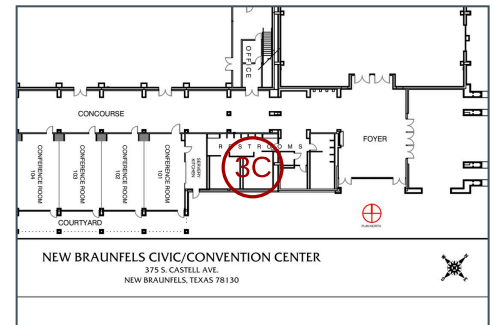


Kim Goss

May 12, 2021 11:35 AM

Sheet

A1



Cost Impact

225

#46 Priority 3: Toilet Compartments

Status

Open

Location

North Women's Restroom

Description

The door to the ambulatory accessible toilet stall is not self-closing.

Recommendation: Adjust door hinges.

Photos

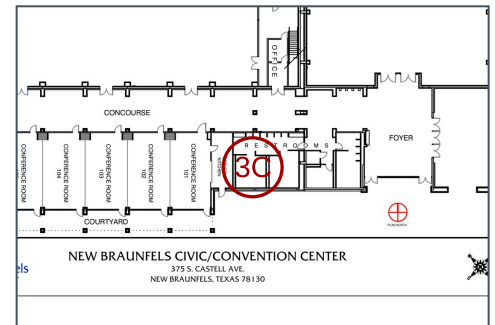


Kim Goss

May 12, 2021 11:31 AM

Sheet

A1



Cost Impact

225

#50 Priority 3: Toilet Compartments

Status
Open

Location
North Women's Restroom

Description
The side approach width to the ambulatory accessible toilet stall is only 41" wide. A minimum 42" width is required.

Recommendation:
Reconfigure partitions to provide a minimum 42" clearance.

Photos

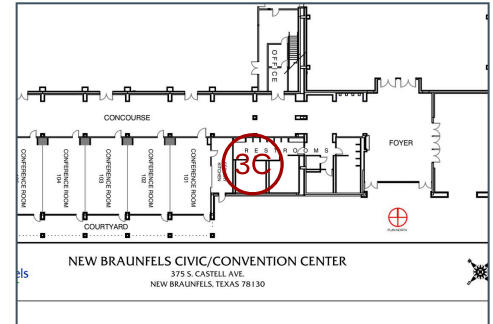


Kim Goss
May 12, 2021 11:34 AM



Kim Goss
May 12, 2021 11:34 AM

Sheet
A1



Cost Impact
2500

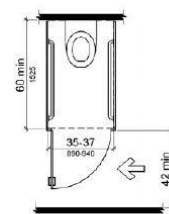


Figure 604.8.2 Ambulatory Accessible Toilet Compartment

604.8.2

Kim Goss
Jun 24, 2021 10:26 AM

#54 Priority 3: Toilet Compartments

Status

Open

Location

North Men's Restroom

Description

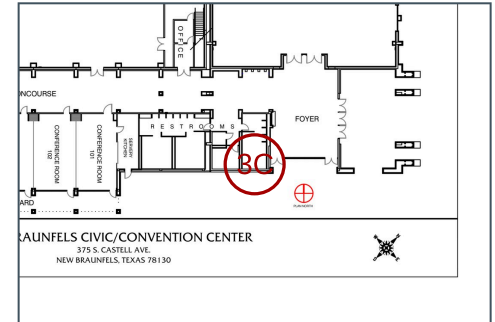
The door to the wheelchair accessible toilet stall does not have a pull on the inside.

Recommendation: Install door pull.

(Note: If the stall door and hardware were installed prior to March 15, 2012, it may enjoy safe harbor until replaced.)

Sheet

A1



Cost Impact

100

Photos



Kim Goss

May 12, 2021 11:42 AM



Kim Goss

May 12, 2021 11:42 AM

#55 Priority 3: Toilet Compartments

Status
Open

Location
North Men's Restroom

Description
The door to the ambulatory accessible toilet stall does not have a pull on the inside.

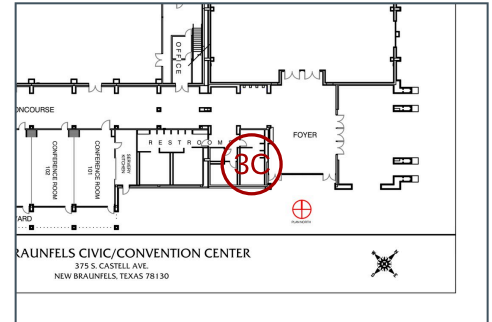
Recommendation: Install door pull.
(Note: If the stall door and hardware were installed prior to March 15, 2012, it may enjoy safe harbor until replaced.)

Photos



Kim Goss
May 12, 2021 11:41 AM

Sheet
A1



Cost Impact
100

#56 Priority 3: Toilet Compartments

Status

Open

Location

North Men's Restroom

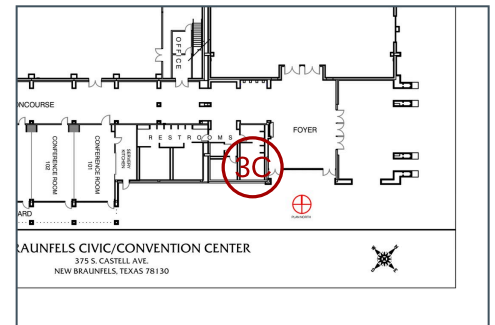
Description

The door to the wheelchair accessible toilet stall is not self-closing.

Recommendation: Adjust door hinges.

Sheet

A1



Cost Impact

225

Photos



Kim Goss

May 12, 2021 11:42 AM

#57 Priority 3: Toilet Compartments

Status

Open

Location

North Men's Restroom

Description

The door to the ambulatory accessible toilet stall is not self-closing.

Recommendation: Adjusts door hinges.

Photos

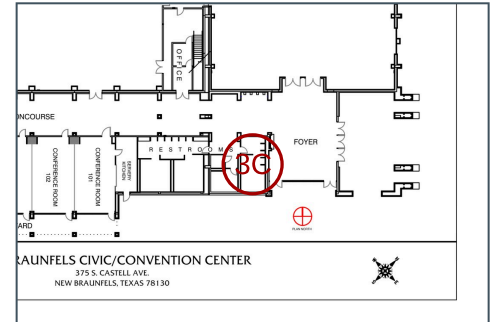


Kim Goss

May 12, 2021 11:41 AM

Sheet

A1



Cost Impact

225

#19 Priority 3: Doors

Status

Open

Location

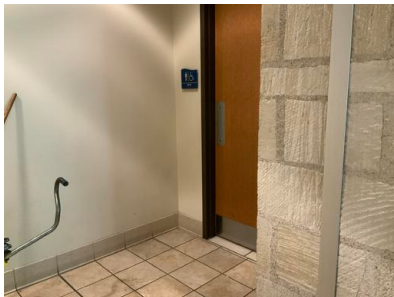
South Men's Restroom

Description

The entrance door requires more than 5 lbs of force to open.

Recommendation: Adjust door closer.

Photos

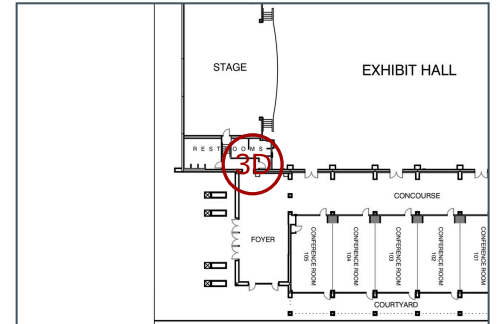


Kim Goss

May 12, 2021 11:21 AM

Sheet

A1



Cost Impact

150

#20 Priority 3: Doors

Status

Open

Location

South Women's Restroom

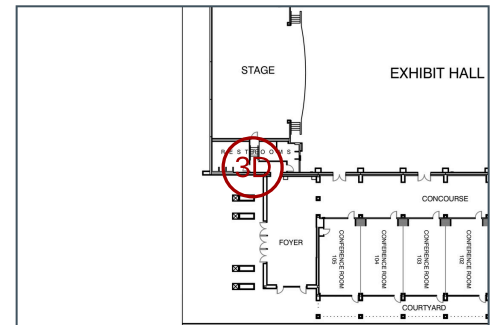
Description

The entrance door requires more than 5 lbs of force to open.

Recommendation: Adjust door closer.

Sheet

A1



Cost Impact

150

Photos



Kim Goss

May 12, 2021 11:22 AM

#66 Priority 3: Benches

Status

Open

Location

Women's Dressing
Restroom

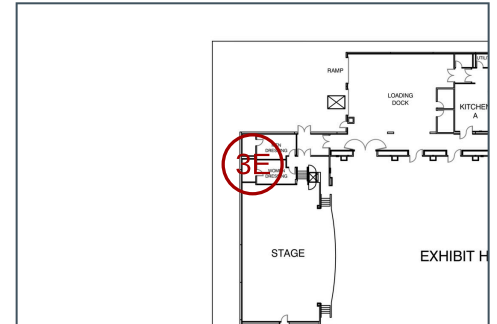
Description

The bench does not have a clear floor space at the end for a side transfer.

Recommendation: Install an accessible bench with a 30x48 clear floor space at the end for side transfer.
(Note: If the bench was installed prior to March 15, 2012, it may enjoy safe harbor until modified or replaced.)

Sheet

A1



Cost Impact

2000

Photos



Kim Goss

May 12, 2021 10:37 AM

#68 Priority 3: Benches

Status

Open

Location

Men's Dressing Restroom

Description

The bench does not have a clear floor space at the end for a side transfer.

Recommendation: Install an accessible bench with a 30x48 clear floor space at the end for side transfer.
(Note: If the bench was installed prior to March 15, 2012, it may enjoy safe harbor until modified or replaced.)

Photos

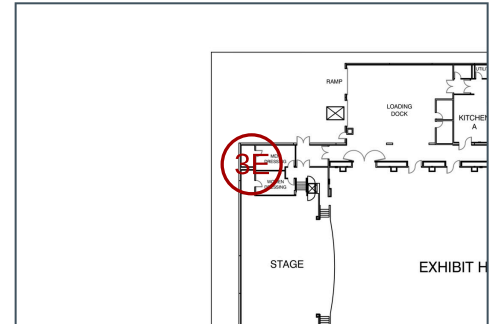


Kim Goss

May 12, 2021 10:41 AM

Sheet

A1



Cost Impact

2000

#31 Priority 3: Grab Bars

Status

Open

Location

South Women's Restroom

Description

The grab bars in the wheelchair accessible toilet stall are positioned with the top of the bar 36-1/2" high. The side grab bar has a clearance of less than 12" between the bar and the toilet paper dispenser

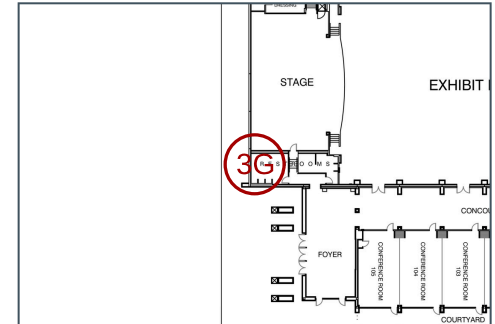
Recommendation:

Reposition grab bars 33" to 36" to the top of the gripping surface with a minimum 12" clearance above and 1 1/2" below. See related Item #32. (Note: If the grab bars and dispenser were installed prior to March 15, 2012, they may enjoy safe harbor until modified or replaced.)

Photos

Sheet

A1



Cost Impact

400



Kim Goss
May 12, 2021 11:15 AM



Kim Goss
May 12, 2021 11:15 AM



Kim Goss
May 12, 2021 11:15 AM



Kim Goss
May 12, 2021 11:15 AM



Kim Goss
May 12, 2021 11:15 AM



Kim Goss
May 12, 2021 11:15 AM

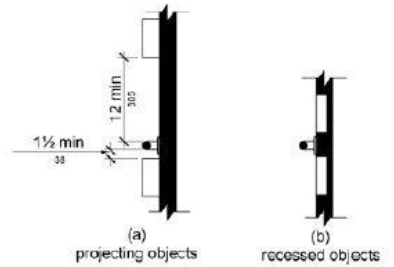


Figure 609.3 Spacing of Grab Bars

609.3
Kim Goss
Jun 24, 2021 10:10 AM

#39 Priority 3: Grab Bars

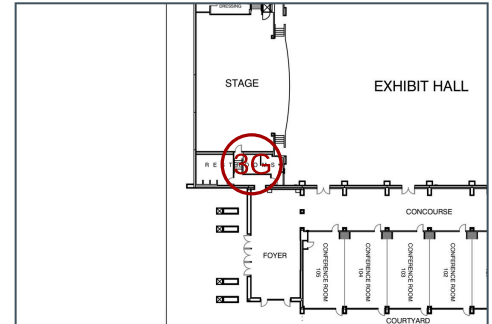
Status
Open

Location
South Men's Restroom

Description
The grab bars in the wheelchair accessible toilet stall are positioned with the top of the bar 37" high.

Recommendation:
Reposition grab bars 33" to 36" to the top of the gripping surface with a minimum 12" clearance above and 1 1/2" below.
(Note: If the grab bars were installed prior to March 15, 2012, they may enjoy safe harbor until modified or replaced.)

Sheet
A1



Cost Impact
400

Photos



Kim Goss
May 12, 2021 11:20 AM



Kim Goss
May 12, 2021 11:20 AM



Kim Goss
May 12, 2021 11:20 AM



Kim Goss
May 12, 2021 11:20 AM

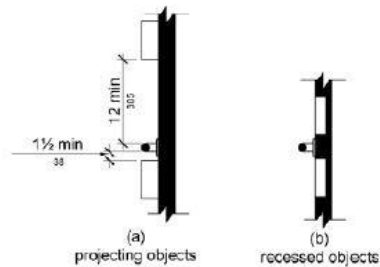


Figure 609.3 Spacing of Grab Bars
609.3
Kim Goss
Jun 24, 2021 10:13 AM

#47 Priority 3: Grab Bars

Status

Open

Location

North Women's Restroom

Description

The grab bars in the wheelchair accessible toilet stall are positioned with the top of the bar 36-3/4" high. The side grab bar has a clearance of less than 12" between the bar and the toilet paper dispenser.

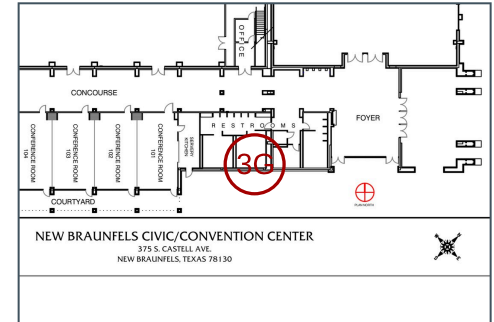
Recommendation:

Reposition grab bars 33" to 36" to the top of the gripping surface with a minimum 12" clearance above and 1 1/2" below. See related Item #48. (Note: If the grab bars and dispenser were installed prior to March 15, 2012, they may enjoy safe harbor until modified or replaced.)

Photos

Sheet

A1



Cost Impact

400



Kim Goss
May 12, 2021 11:36 AM



Kim Goss
May 12, 2021 11:36 AM



Kim Goss
May 12, 2021 11:36 AM



Kim Goss
May 12, 2021 11:36 AM



Kim Goss
May 12, 2021 11:36 AM



Kim Goss
May 12, 2021 11:36 AM

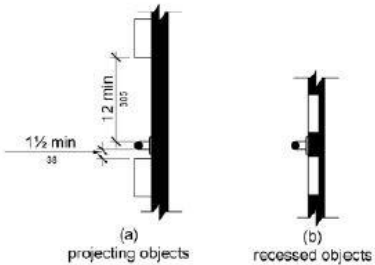


Figure 609.3 Spacing of Grab Bars

609.3
Kim Goss
Jun 24, 2021 10:35 AM

#51 Priority 3: Grab Bars

Status

Open

Location

North Women's Restroom

Description

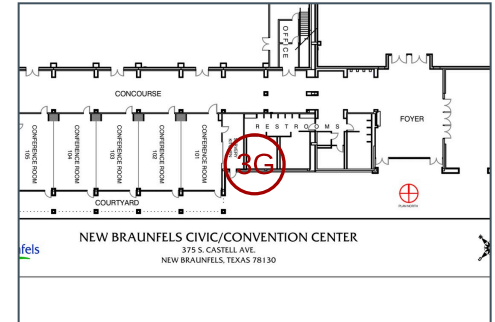
The grab bars in the ambulatory accessible toilet stall are positioned 13" from the rear wall and with the top of the bar 36-3/4" high. The side grab bar has a clearance of less than 12" between the bar and the toilet paper dispenser.

Recommendation:

Reposition grab bars 12" from the rear wall and 33" to 36" to the top of the gripping surface with a minimum 12" clearance above and 1 1/2" below. See related Item #49.

Sheet

A1



Cost Impact

400

Photos



Kim Goss

May 12, 2021 11:32 AM



Kim Goss

May 12, 2021 11:32 AM



Kim Goss

May 12, 2021 11:32 AM



Kim Goss
May 12, 2021 11:33 AM



Kim Goss
May 12, 2021 11:33 AM

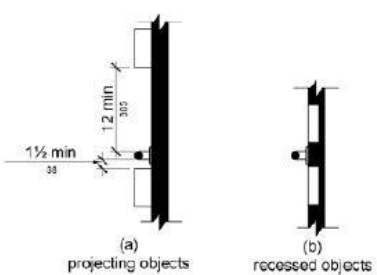


Figure 609.3 Spacing of Grab Bars
609.3
Kim Goss
Jun 24, 2021 10:30 AM

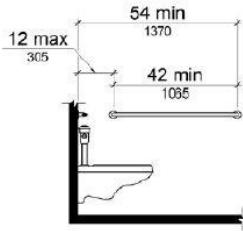


Figure 604.5.1 Side Wall Grab Bar at Water Closets
604.5.1
Kim Goss
Jun 24, 2021 10:30 AM

#63 Priority 3: Grab Bars

Status

Open

Location

Women's Dressing
Restroom

Description

The grab bars at the water closet are positioned with the top of the bar 36-1/2" high. The side grab bar has a clearance of less than 12" between the bar and the toilet paper dispenser

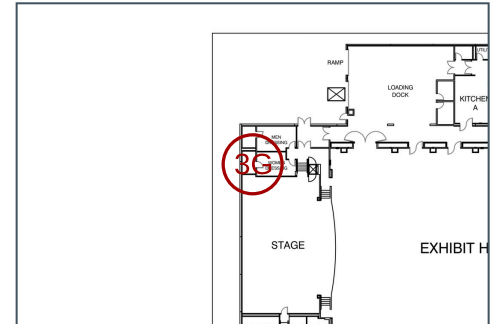
Recommendation: Position grab bars 33" to 36" to the top of the gripping surface with a minimum 12" clearance above and 1 1/2" below.

(Note: If the grab bars and dispenser were installed prior to March 15, 2012, they may enjoy safe harbor until modified or replaced.)

Photos

Sheet

A1



Cost Impact

400



Kim Goss
May 12, 2021 10:38 AM



Kim Goss
May 12, 2021 10:38 AM



Kim Goss
May 12, 2021 10:38 AM



Kim Goss
May 12, 2021 10:39 AM



Kim Goss
May 12, 2021 10:39 AM



Kim Goss
May 12, 2021 10:39 AM

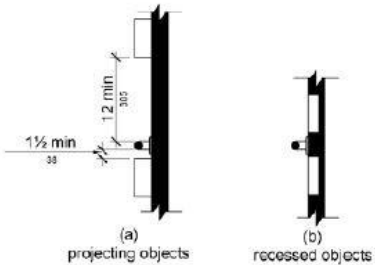


Figure 609.3 Spacing of Grab Bars

609.3
Kim Goss
Jun 24, 2021 9:42 AM

#70 Priority 3: Grab Bars

Status

Open

Location

Men's Dressing Restroom

Description

The grab bars at the water closet are positioned with the top of the bar 36-1/2" high. The side grab bar has a clearance of less than 12" between the bar and the toilet paper dispenser

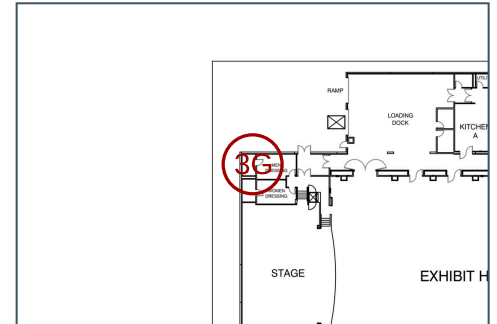
Recommendation:

Reposition grab bars 33" to 36" to the top of the gripping surface with a minimum 12" clearance above and 1 1/2" below.

(Note: If the grab bars and dispenser were installed prior to March 15, 2012, they may enjoy safe harbor until modified or replaced.)

Sheet

A1



Cost Impact

400

Photos



Kim Goss

May 12, 2021 10:42 AM



Kim Goss

May 12, 2021 10:42 AM



Kim Goss

May 12, 2021 10:42 AM



Kim Goss
May 12, 2021 10:42 AM



Kim Goss
May 12, 2021 10:43 AM



Kim Goss
May 12, 2021 10:43 AM

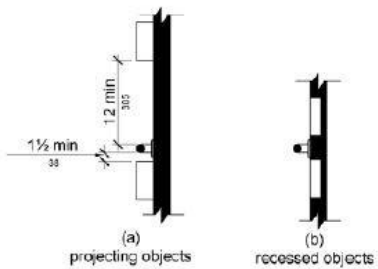


Figure 609.3 Spacing of Grab Bars

609.3
Kim Goss
Jun 24, 2021 9:41 AM

#53 Priority 3: Mirrors

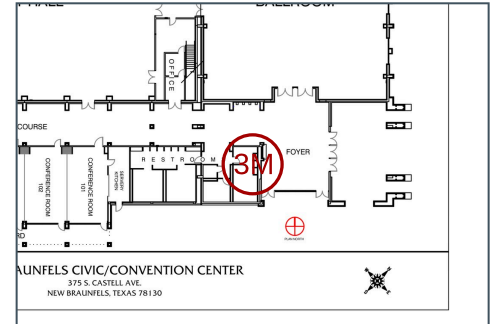
Status
Open

Location
North Men's Restroom

Description
The mirrors over each of the lavatories are positioned with the bottom of the reflective surface 40-3/4" high.

Recommendation:
Reposition one mirror with the bottom of the glass no higher than 40".

Sheet
A1



Cost Impact
300

Photos



Kim Goss
May 12, 2021 11:40 AM



Kim Goss
May 12, 2021 11:40 AM



Kim Goss
May 12, 2021 11:40 AM

#28 Priority 3: Reach Range

Status

Open

Location

South Women's Restroom

Description

The openings of both paper towel dispensers are 50" and 49 1/2" high.

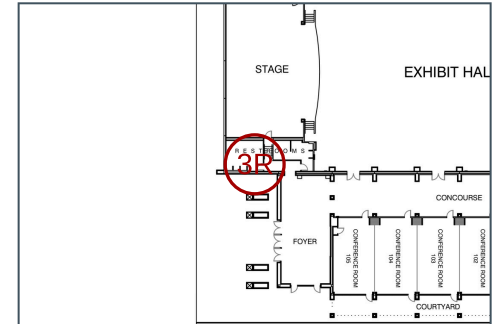
Recommendation:

Reposition at least one dispenser with opening no higher than 48".

(Note: If the dispensers were installed prior to March 15, 2012, they may enjoy safe harbor until replaced.)

Sheet

A1



Cost Impact

200

Photos



Kim Goss

May 12, 2021 11:12 AM



Kim Goss

May 12, 2021 11:12 AM



Kim Goss

May 12, 2021 11:12 AM



Kim Goss
May 12, 2021 11:13 AM



Kim Goss
May 12, 2021 11:14 AM



Kim Goss
May 12, 2021 11:14 AM

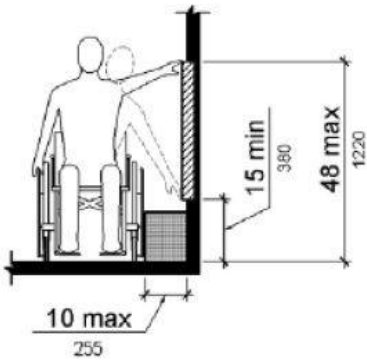


Figure 308.3.1 Unobstructed Side Reach

308.3.1
Kim Goss
Jun 24, 2021 9:44 AM

#30 Priority 3: Reach Range

Status
Open

Location
South Women's Restroom

Description
The coat hook in the wheelchair accessible toilet stall is 54" high.

Recommendation: Install a hook positioned no higher than 48".
(Note: If the hook was installed prior to March 15, 2012, it may enjoy safe harbor until replaced.)

Photos

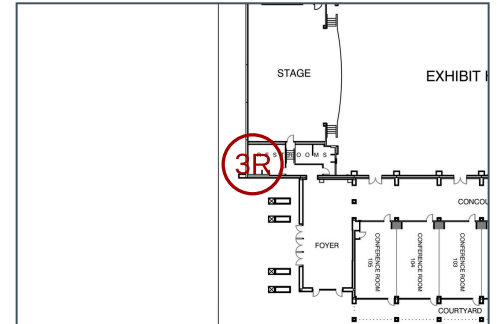


Kim Goss
May 12, 2021 11:14 AM



Kim Goss
May 12, 2021 11:14 AM

Sheet
A1



Cost Impact
50

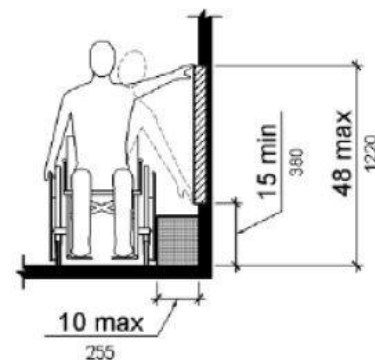


Figure 308.3.1 Unobstructed Side Reach

308.3.1
Kim Goss
Jun 24, 2021 10:14 AM

#36 Priority 3: Reach Range

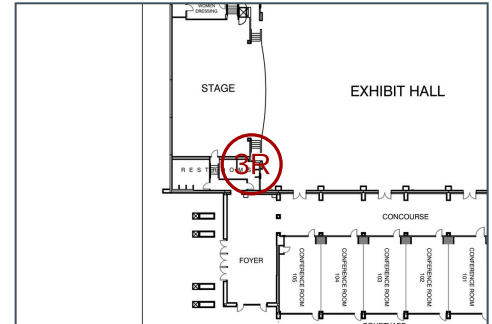
Status
Open

Location
South Men's Restroom

Description
The openings of both paper towel dispensers are 50" high.

Recommendation:
Reposition dispenser with opening no higher than 48".
(Note: If the dispensers were installed prior to March 15, 2012, they may enjoy safe harbor until replaced.)

Sheet
A1



Cost Impact
200

Photos



Kim Goss
May 12, 2021 11:17 AM



Kim Goss
May 12, 2021 11:18 AM



Kim Goss
May 12, 2021 11:18 AM

#40 Priority 3: Reach Range

Status
Open

Location
South Men's Restroom

Description
The coat hook in the wheelchair accessible toilet stall is 54" high.

Recommendation: Install a hook positioned no higher than 48".
(Note: If the hook was installed prior to March 15, 2012, it may enjoy safe harbor until replaced.)

Photos

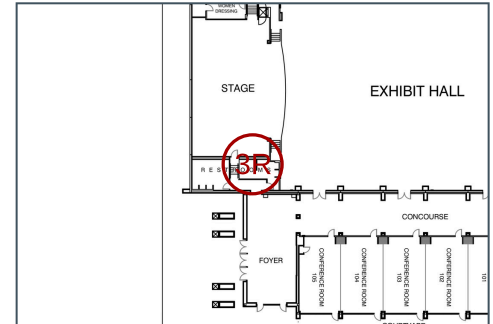


Kim Goss
May 12, 2021 11:19 AM



Kim Goss
May 12, 2021 11:19 AM

Sheet
A1



Cost Impact
50

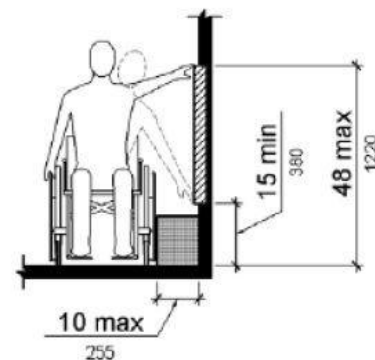


Figure 308.3.1 Unobstructed Side Reach

308.3.1
Kim Goss
Jun 24, 2021 10:14 AM

#41 Priority 3: Reach Range

Status

Open

Location

North Women's Restroom

Description

The coat hook in the wheelchair accessible toilet stall is 54" high.

Recommendation: Install a coat hook no higher than 48".

(Note: If the hook was installed prior to March 15, 2012, it may enjoy safe harbor until replaced.)

Photos



Kim Goss

May 12, 2021 11:35 AM

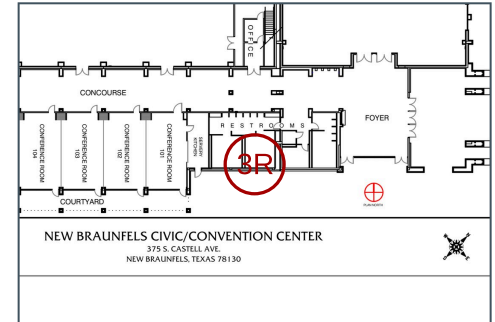


Kim Goss

May 12, 2021 11:35 AM

Sheet

A1



Cost Impact

50

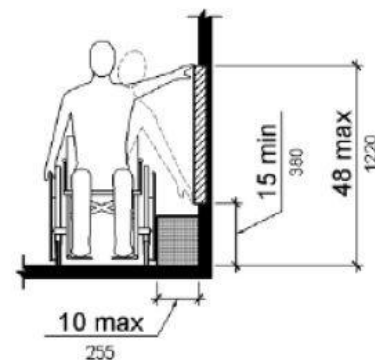


Figure 308.3.1 Unobstructed Side Reach

308.3.1

Kim Goss

Jun 24, 2021 10:35 AM

#42 Priority 3: Reach Range

Status
Open

Location
North Women's Restroom

Description
The coat hook in the ambulatory accessible toilet stall is 54" high.

Recommendation: Install a coat hook no higher than 48".
(Note: If the hook was installed prior to March 15, 2012, it may enjoy safe harbor until replaced.)

Photos

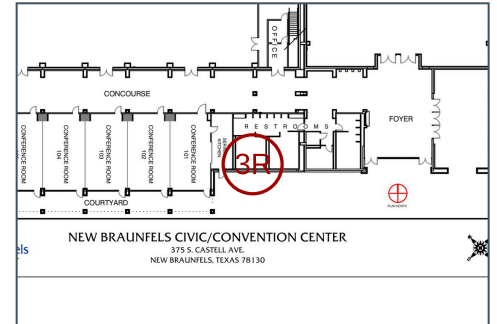


Kim Goss
May 12, 2021 11:31 AM



Kim Goss
May 12, 2021 11:32 AM

Sheet
A1



Cost Impact
50

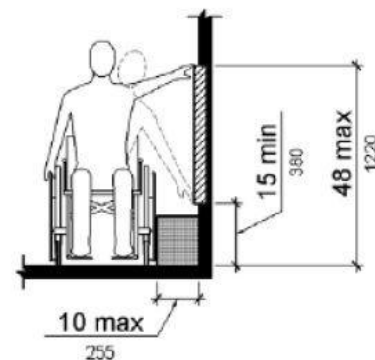


Figure 308.3.1 Unobstructed Side Reach

308.3.1
Kim Goss
Jun 24, 2021 10:36 AM

#65 Priority 3: Reach Range

Status

Open

Location

Women's Dressing
Restroom

Description

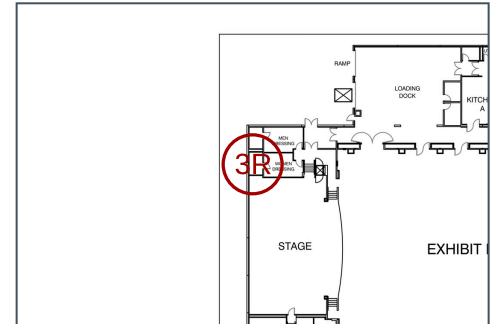
The opening of the paper
towel dispenser is 50" high.

Recommendation:

Reposition dispenser with
opening no higher than 48".
(Note: If the dispenser was
installed prior to March 15,
2012, it may enjoy safe
harbor until replaced.)

Sheet

A1



Cost Impact

200

Photos



Kim Goss

May 12, 2021 10:40 AM



Kim Goss

May 12, 2021 10:40 AM

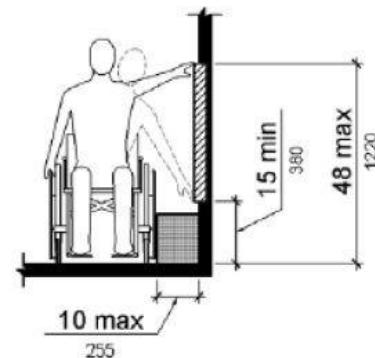


Figure 308.3.1 Unobstructed Side Reach

308.3.1

Kim Goss

Jun 24, 2021 9:35 AM

#72 Priority 3: Reach Range

Status
Open

Location
Men's Dressing Restroom

Description
The opening of the paper towel dispenser is 50" high.

Recommendation:
Reposition dispenser with opening no higher than 48".
(Note: If the dispenser was installed prior to March 15, 2012, it may enjoy safe harbor until replaced.)

Photos

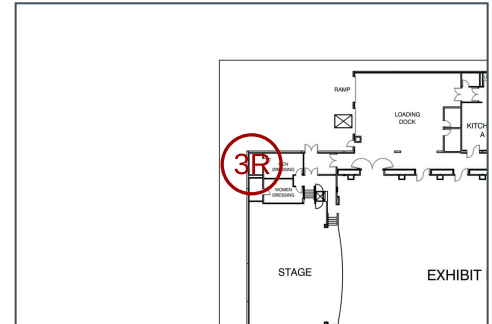


Kim Goss
May 12, 2021 10:43 AM



Kim Goss
May 12, 2021 10:44 AM

Sheet
A1



Cost Impact
200

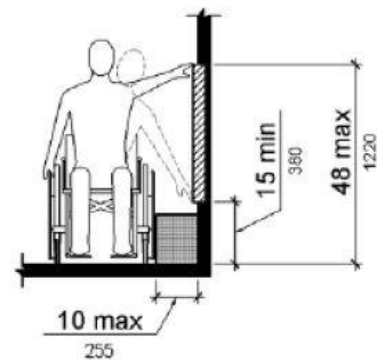


Figure 308.3.1 Unobstructed Side Reach

308.3.1

Kim Goss

Jun 24, 2021 9:34 AM

#52 Priority 3: Urinals

Status
Open

Location
North Men's Restroom

Description
The accessible urinal is positioned with the rim 18-1/4" high.

Recommendation:
Reposition urinal with the rim no higher than 17".

Photos

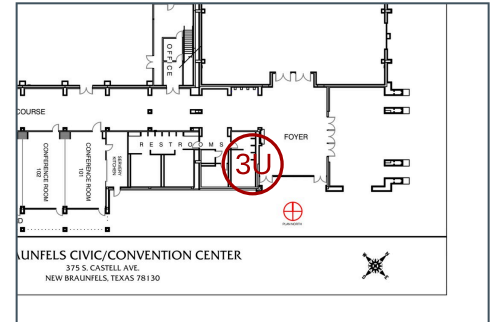


Kim Goss
May 12, 2021 11:41 AM



Kim Goss
May 12, 2021 11:41 AM

Sheet
A1



Cost Impact
1250

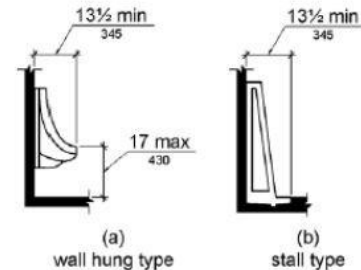


Figure 605.2 Height and Depth of Urinals

605.2

Kim Goss

Jun 24, 2021 10:39 AM

#32 Priority 3: Water Closets

Status
Open

Location
South Women's Restroom

Description
The toilet paper dispenser in the wheelchair accessible toilet stall is not centered 7 to 9" in front of the water closet.

Recommendation:
Reposition the dispenser below the grab bar with the centerline 7" to 9" in front of the water closet. See related Item #31.
(Note: If the dispenser was installed prior to March 15, 2012, it may enjoy safe harbor until replaced.)

Photos



Kim Goss
May 12, 2021 11:15 AM

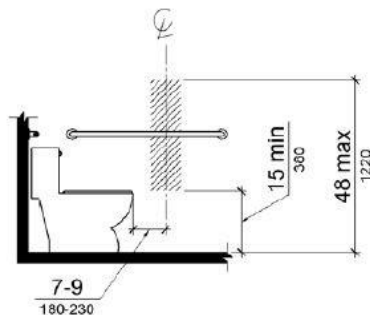
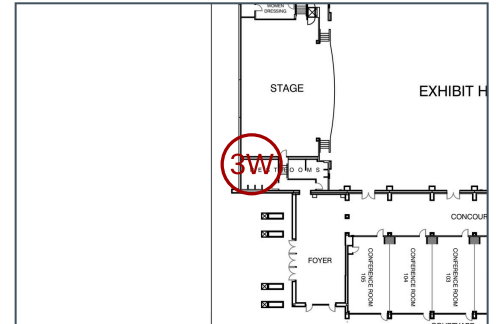


Figure 604.7 Dispenser Outlet Location

604.7
Kim Goss
Jun 24, 2021 9:59 AM

Sheet
A1



Cost Impact
225

#34 Priority 3: Water Closets

Status

Open

Location

South Men's Restroom

Description

The water closet in the wheelchair accessible toilet stall is centered approximately 18 1/2" from the side partition.

Recommendation:

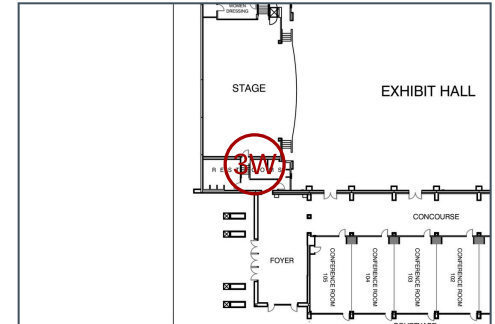
Reposition the water closet with the centerline 16" to 18" from side wall.

(Note: If the water closet was installed prior to March 15, 2012, it may enjoy safe harbor until replaced.)

Photos

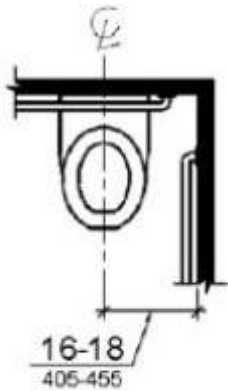
Sheet

A1



Cost Impact

2500



(a)
wheelchair
accessible
water closets

604.2 (a)
Kim Goss
May 16, 2020 1:40 PM



Kim Goss
May 12, 2021 11:19 AM



Kim Goss
May 12, 2021 11:20 AM

#48 Priority 3: Water Closets

Status

Open

Location

North Women's Restroom

Description

The toilet paper dispenser in the wheelchair accessible toilet stall is not centered 7 to 9" in front of the water closet.

Recommendation:

Reposition the dispenser below the grab bar with the centerline 7" to 9" in front of the water closet. See related Item #47.

(Note: If the dispenser was installed prior to March 15, 2012, it may enjoy safe harbor until replaced.)

Photos



Kim Goss

May 12, 2021 11:37 AM

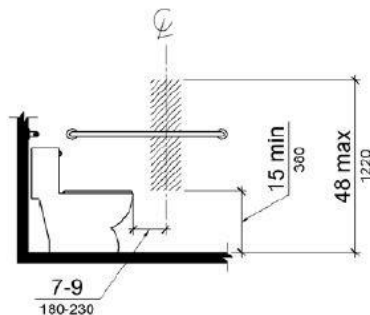


Figure 604.7 Dispenser Outlet Location

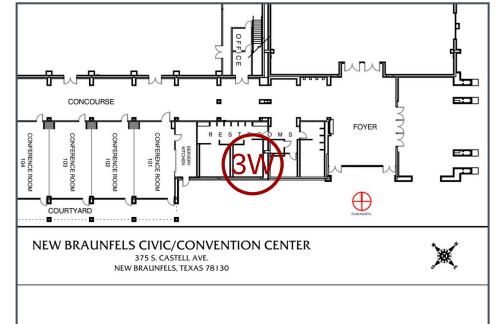
604.7

Kim Goss

Jun 24, 2021 10:34 AM

Sheet

A1



Cost Impact

225

#49 Priority 3: Water Closets

Status

Open

Location

North Women's Restroom

Description

The toilet paper dispenser in the ambulatory accessible toilet stall is not centered 7 to 9" in front of the water closet.

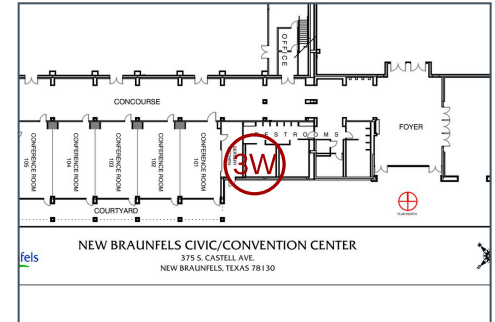
Recommendation:

Reposition the dispenser below the grab bar with the centerline 7" to 9" in front of the water closet. See related Item #51.

(Note: If the dispenser was installed prior to March 15, 2012, it may enjoy safe harbor until replaced.)

Sheet

A1



Cost Impact

225

Photos



Kim Goss

May 12, 2021 11:31 AM



Kim Goss

May 12, 2021 11:37 AM

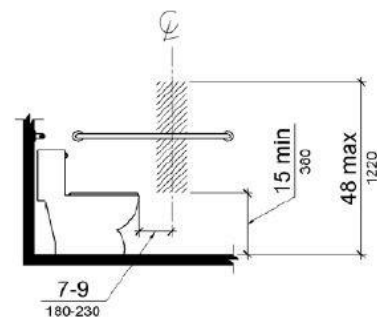


Figure 604.7 Dispenser Outlet Location

604.7

Kim Goss

Jun 24, 2021 10:28 AM

#62 Priority 3: Water Closets

Status

Open

Location

Women's Dressing
Restroom

Description

The water closet is centered approximately 18-1/4" from the side wall.

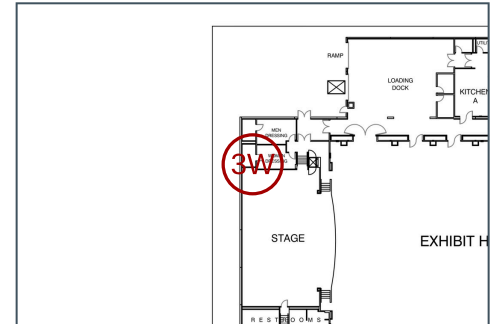
Recommendation:

Reposition the water closet with the centerline 16" to 18" from side wall. (Note: If the water closet was installed prior to March 15, 2012, it may enjoy safe harbor until modified or replaced.)

Photos

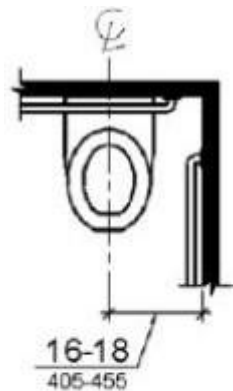
Sheet

A1



Cost Impact

2500

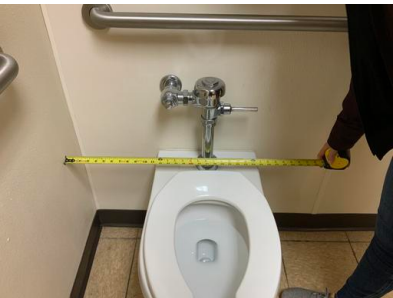


(a)
wheelchair
accessible
water closets

604.2 (a)
Kim Goss
May 16, 2020 1:40 PM



Kim Goss
May 12, 2021 10:37 AM



Kim Goss
May 12, 2021 10:38 AM



Kim Goss
May 12, 2021 10:38 AM

#64 Priority 3: Water Closets

Status

Open

Location

Women's Dressing
Restroom

Description

The water closet has 48-1/2" of clear floor space width measured from the side wall to the edge of the lavatory.

Recommendation: Enlarge restroom to allow a full 60" wide clearance at the water closet measured from side wall to edge of lavatory.
(Note: If the water closet and lavatory were installed prior to March 15, 2012, they may enjoy safe harbor until modified or replaced.)

Photos



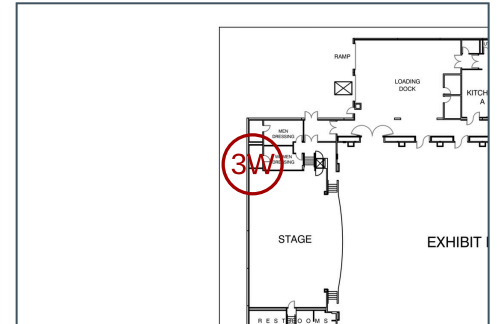
Kim Goss
May 12, 2021 10:39 AM



Kim Goss
May 12, 2021 10:39 AM

Sheet

A1



Cost Impact

15000

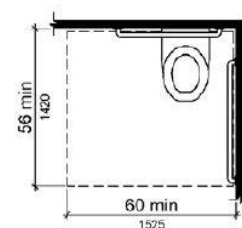


Figure 604.3.1 Size of Clearance at Water Closets

604.3.1

Kim Goss

Jun 24, 2021 9:31 AM

#69 Priority 3: Water Closets

Status

Open

Location

Men's Dressing Restroom

Description

The water closet is centered approximately 18-1/2" from the side wall.

Recommendation:

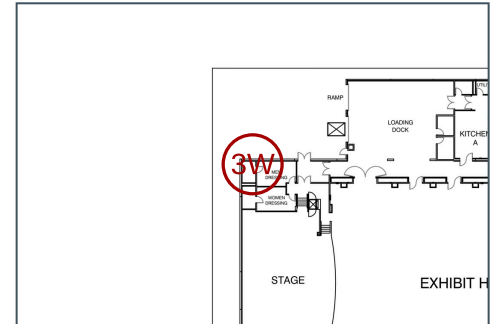
Reposition the water closet with the centerline 16" to 18" from side wall.

(Note: If the water closet was installed prior to March 15, 2012, it may enjoy safe harbor until modified or replaced.)

Photos

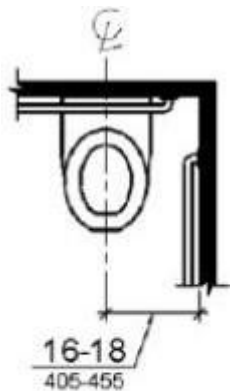
Sheet

A1



Cost Impact

2500



(a)
wheelchair
accessible
water closets

604.2 (a)
Kim Goss
May 16, 2020 1:40 PM



Kim Goss
May 12, 2021 10:42 AM



Kim Goss
May 12, 2021 10:42 AM

#71 Priority 3: Water Closets

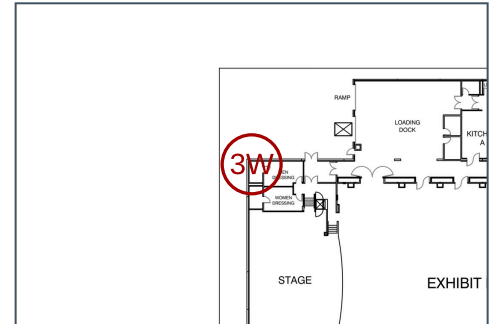
Status
Open

Location
Men's Dressing Restroom

Description
The water closet has 48" of clear floor space width measured from the side wall to the edge of the lavatory.

Recommendation: Enlarge restroom to allow a full 60" wide clearance at the water closet measured from side wall to edge of lavatory.
(Note: If the water closet and lavatory were installed prior to March 15, 2012, they may enjoy safe harbor until modified or replaced.)

Sheet
A1



Cost Impact
15000

Photos



Kim Goss
May 12, 2021 10:43 AM



Kim Goss
May 12, 2021 10:43 AM

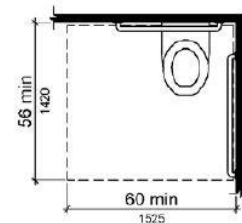


Figure 604.3.1 Size of Clearance at Water Closets

604.3.1
Kim Goss
Jun 24, 2021 9:30 AM

#23 Priority 4: Vending Machines

Status

Open

Location

Concourse

Description

The two vending machines have card slides that are 50" and 58" high.

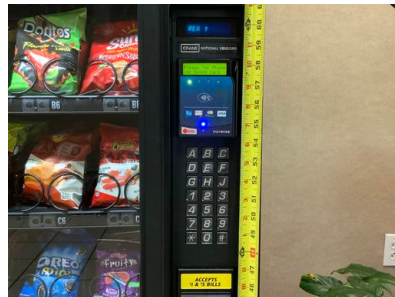
Recommendation: Replace vending machines with compliant models.

Photos



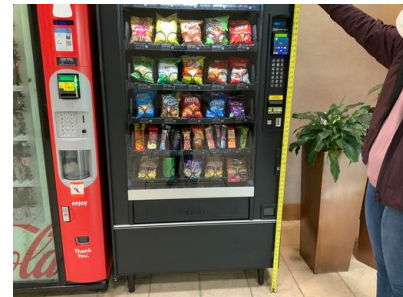
Kim Goss

May 12, 2021 11:28 AM



Kim Goss

May 12, 2021 11:28 AM

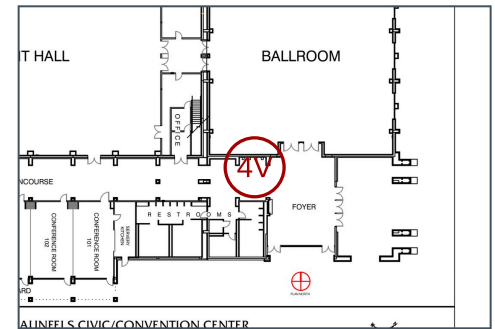


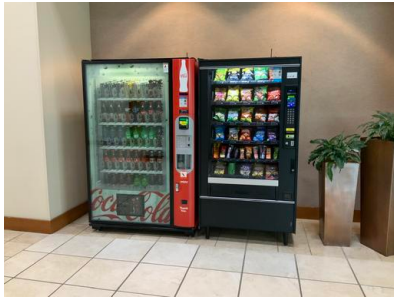
Kim Goss

May 12, 2021 11:28 AM

Sheet

A1





Kim Goss

May 12, 2021 11:28 AM

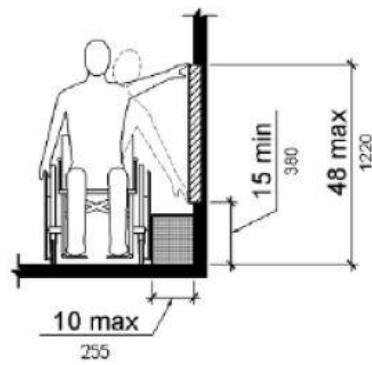


Figure 308.3.1 Unobstructed Side Reach

308.3.1

Kim Goss

Jun 24, 2021 10:24 AM